

Craven District (Area 5)

Craven district in brief

- ◆ Four people, all of whom were adults, were **killed** on Craven's roads during 2015 compared to 9 adults in 2014 and a baseline average of 6 per year for 2010-14. The four people in 2014 were: 2 pedal cyclists and 2 powered two wheeler (PTW) riders.
- ◆ The number of people **killed or seriously injured (KSI)** was 54 in 2015, a decrease from 58 in 2014, but still a slight increase on the baseline average of 49. In terms of road user groups, the number of KSIs has decreased in all road user groups except for the car occupant group (+2) and other (+1). The biggest decrease was seen in the PTW group which reduced by 4, the pedal cyclist, goods vehicle and pedestrian groups all decreased by 1..
- ◆ The total number of **all casualties** in road collisions reported to the police in Craven during 2015 was 216, a 2% decrease on 2014 (220) and a 8% reduction from the baseline. This decrease is reflected in PTW which saw a 33% (-16) decrease in casualties in 2015 and in the pedal cyclists which saw a 41% reduction (-9). The car occupants (10), pedal cyclists (6), goods vehicle (4) and other categories (1) all saw an increase in the total number of casualties.
- ◆ There were 3 **child KSI casualties** (aged 0-15) in the district in 2015 which is 3 more the previous year and 2 above the baseline average.
- ◆ The number of **cyclist** casualties has increased by 25% to 30 in 2015 from 24 in 2014, which is also above the baseline average of 22. The level of cycling has gradually increased throughout the county in recent years including in Craven, especially since the Tour de France but we are unable to quantify this at present.
- ◆ **Pedestrian** casualties decreased by 41% to 13 in 2015 from 22 in 2014. This decrease is more pronounced amongst pedestrians slightly injured, which fell from 16 to 8.
- ◆ The number of **powered two wheeler (PTW)** casualties has decreased by 33% to 33 in 2015 from 49 in 2014. The decrease is less pronounced amongst PTW KSI (18) which is 18% or 4 less than the total (22) recorded the previous year.
- ◆ A total of 161 **road collisions** that resulted in someone being injured were reported to the police in 2015, 16 less than in 2014. This total works out at an average of 13 collisions per month or 3 per week.

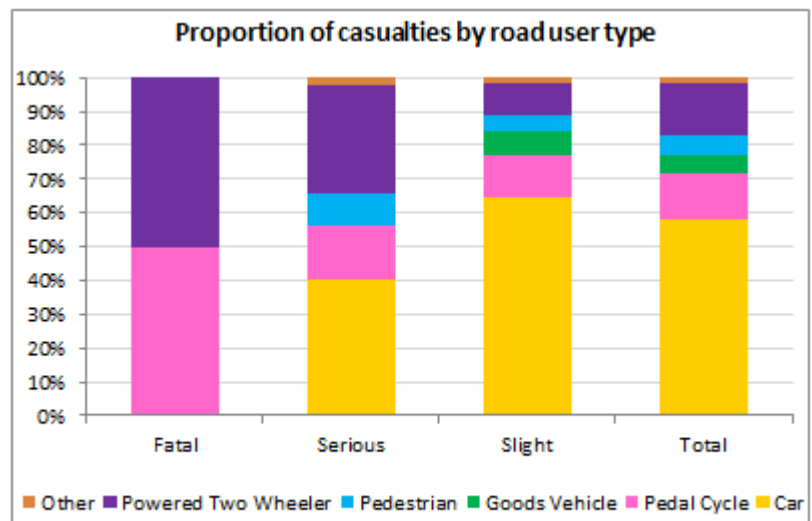


Figure 19 - Proportion of all casualties by road user type in 2015 - Craven
Source - Road Safety & Travel Awareness, North Yorkshire County Council

All Casualties – Craven

The number of road casualties reported to the Police in Craven has seen an overall reduction in 2015, having also decreased in 2014. The total number of casualties is below the downward trend line and is continuing to reduce. However, no statistically significant reductions were seen in the Craven district in 2015.

In 2014, the district recorded 4 fewer casualties compared to the previous year. The decrease is mainly amongst PTW (-16), and pedestrians (-9) though the car, pedal cycle, goods vehicles, and other groups all increased (by 10, 6, 4 and 1 respectively).

The districts overall performance of -8% is better than the total reduction of casualties recorded in North Yorkshire (down by 1% over the baseline).

Facts about all casualties in 2015

- ◆ There were 216 casualties in 2015, 4 fewer than in 2014 (a 2% decrease).
- ◆ Car occupants make up the largest proportion of road casualties (58%); followed by powered two wheeler riders (15%), pedal cyclists (14%), pedestrians (6%), goods vehicles (5%) and others (2%).
- ◆ The number of casualties recorded in 2015, is 25% below the 2010-14 baseline average.
- ◆ The number of children injured (3) which represents 5% of all casualties in 2015, was 3 more than in 2014.
- ◆ PTW casualties decreased and the 2015 total (33) is now 9% below the 2010-14 average (36).
- ◆ There was an average of 13 collisions per month or 3 per week in which someone was hurt.

Craven	Baseline (Avg 10-14)	2012	2013	2014	2015	2015 vs baseline	Statistically significant change
Fatal	6	4	7	9	4	-33.3%	—
Serious	43	41	43	49	50	15.7%	—
Slight	185	170	201	162	162	-12.2%	—
Total	234	215	251	220	216	-7.6%	—
KSI	49	45	50	58	54	9.8%	—
Child KSI	1	2	2	0	3	114.3%	—
Young Person KSI	7	10	7	9	16	142.4%	—
Adult Person KSI	23	19	21	30	22	-5.2%	—
Older Person KSI	14	10	17	14	7	-49.3%	—
Elderly Person KSI	4	4	3	5	6	42.9%	—
Pedestrian KSI	4	5	3	5	5	19.0%	—
Cyclist KSI	8	6	9	11	10	22.0%	—
PTW KSI	19	16	19	22	18	-4.3%	—
All Child Casualties	16	19	13	8	10	-36.7%	—
All Cyclist Casualties	22	16	29	24	30	38.9%	—

Table 17 - Reported road traffic casualties and severity since 2012 - Craven
Source - Road Safety & Travel Awareness, North Yorkshire County Council

Killed or Seriously Injured (KSI) Casualties - Craven

In 2015, the total of 54 KSI casualties in Craven was lower than 2014 (58) but still 10% above the 2010-14 yearly average (49).

The year saw a decrease in the number of PTW riders hurt (from 22 to 18), a decrease of 1 casualty was seen in the pedal cyclist, goods vehicle and pedestrian groups. An increase of 2 was seen in the car occupants and 1 in the other group.

The number of KSI (3) amongst children (0-15 years old) increased in 2015 compared to the previous year (0).

The decrease in KSI in 2015 against 2014 is good; however, as shown in the graph below, KSI figures have been gradually been rising since 2011 within Craven, so it is hoped this is a start of a new downward trend within the district.

Facts about KSI casualties in 2015

- ◆ The number of people killed or seriously injured reduced by 7% from 58 to 54 in 2015.
- ◆ The decrease in KSI casualties in 2015 is mainly associated with a decrease in PTW, pedal cyclist, goods vehicle and pedestrian casualties (down by 4, 1, 1 and 1 respectively).
- ◆ The number of KSI car occupant and other vehicle type casualties increased in 2015 by 2 and 1.
- ◆ Cyclist KSI casualties are at the 2nd highest point since they started to increase after 2007.

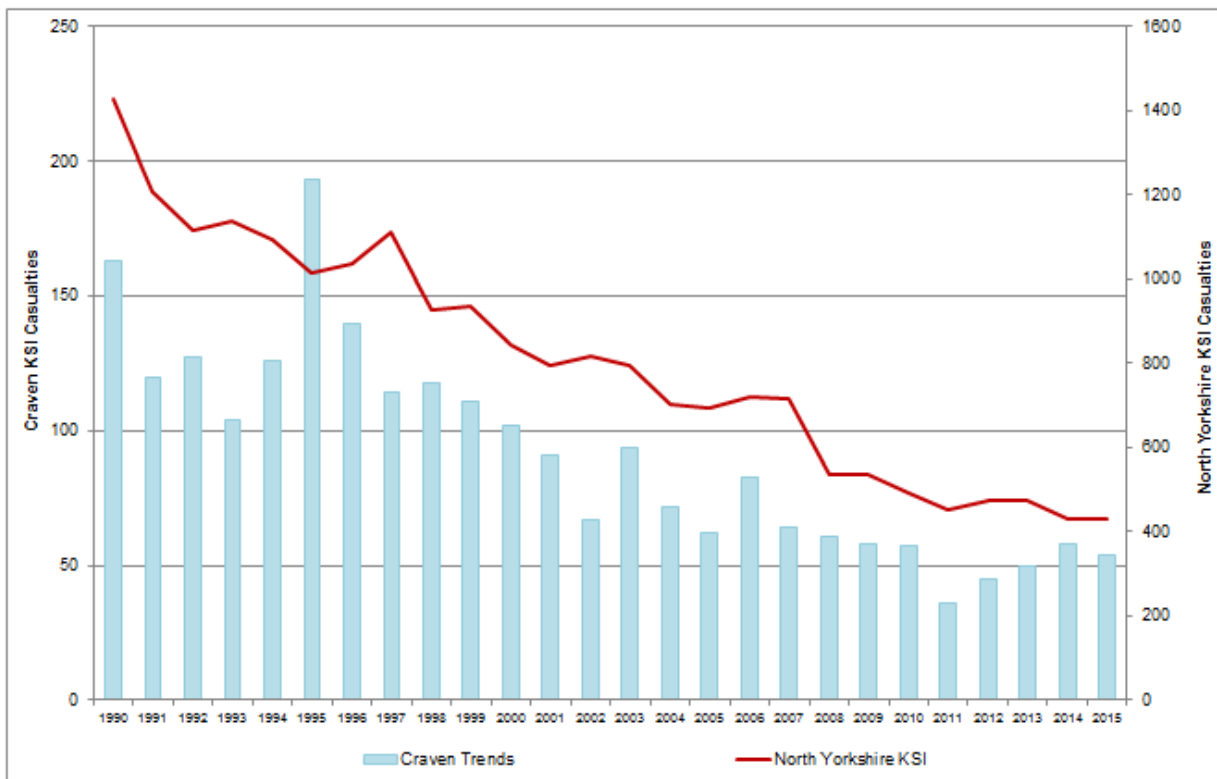


Figure 20 - Reported road traffic KSI casualty trends since 1990 - Craven
Source - Road Safety & Travel Awareness, North Yorkshire County Council

Child Casualties - Craven

The number of children injured increased in 2015 from 8 to 10 compared to the previous year continuing an alternating high low trend which started in 2010.

No children were killed or seriously injured in Craven during 2014: all 8 casualties were only slightly hurt that year. However, in 2015 3 children were seriously injured and 7 slightly injured.

This year's overall child casualty numbers show a decrease of 37% against the 2010-14 baseline average, and a 25% increase from the previous year. It is important to treat these percentages with some caution as the numbers are very small so changes expressed in percentage terms look large.

Facts about child casualties in 2015

- ◆ 5 of the children injured were primary age and 5 were secondary age.
- ◆ The Child pedestrian collisions involved a child crossing the road failing to look properly.
- ◆ The other collision involving a child was a child on a scooter failing to look properly.
- ◆ The pedal cyclist collision likewise involved a child pedal cyclist entering the road without looking.
- ◆ The child pedal cyclist was not wearing a cycle helmet.
- ◆ 3 of the 5 children injured in a car were injured in the same collision when the car they were in, which appears to have been driven by a parent, lost control on a bend.
- ◆ 6 of the 8 collisions involving children occurred on a weekday, the majority of which were at school starting or ending times.

The increase in child casualties is mainly associated with the car occupant casualties from 4 to 6 and child pedestrians increased from 1 to 2. Reductions were seen in the number of child pedal cyclist casualties from 3 to 1.

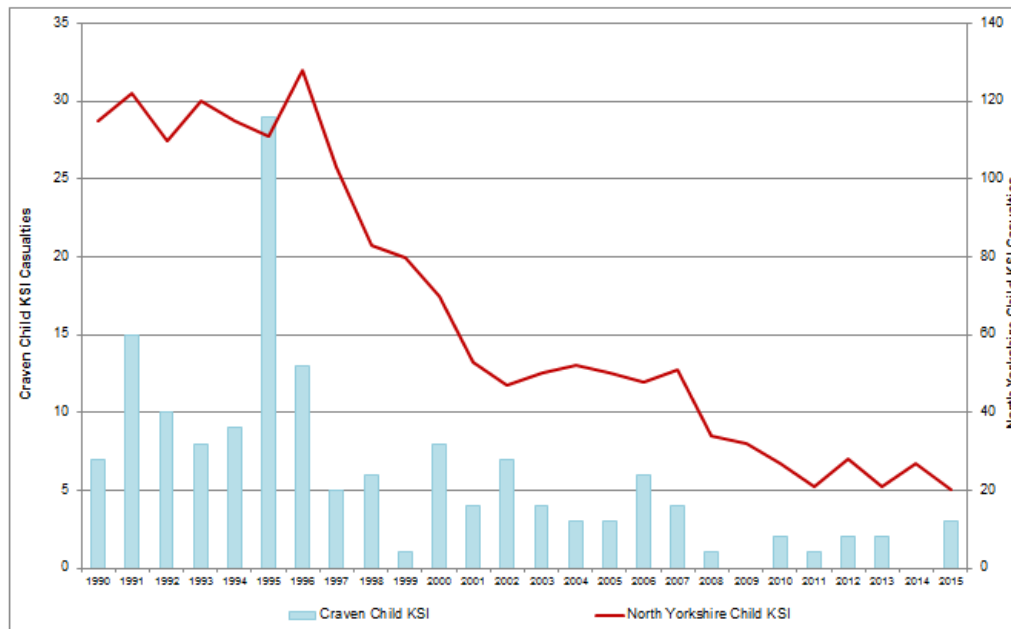


Figure 21 - Reported road traffic KSI child casualty trends since 1990 - Craven
Source - Road Safety & Travel Awareness, North Yorkshire County Council

Road Safety Education and Community Engagement – Craven

Children - Primary School

Some 463 Year 5 and 6 primary school pupils at 26 schools were trained to cycle on the road in the Bikeability cycle training programme over the last year.

This year we piloted a new Bikeability Plus training programme to 54 students at 3 schools in Craven. This scheme extends the existing programme to younger children, teaching basic skills on push and glide bikes.



Image 19 - Reception children at St Stephen's School, Skipton, try out the new Bikeability Plus course

Over 600 Year 6 students from 40 schools attend the Crucial Crew multi-agency safety education event at Eshton Grange at Gargrave. The children learned road safety facts by taking part in active scenarios and workshop sessions with follow up lesson information provided to their teachers.

The Road Safety and Travel Awareness Officer has supported several local schools and communities concerned about school gate parking issues and provided advice together with our School Gate Parking Resource Pack.

Children - Secondary School

The “Learn and Live” multi-agency new drivers’ presentation was held at 4 secondary schools and colleges across the county, including Craven College, Skipton Girls High School, Settle College and Ermysted’s Grammar. We will be supporting the secondary schools to deliver road safety lessons throughout the curriculum, with the benefit of our own specialist curriculum adviser. A number of High Schools are now using safer cycling resources in Year 7 to encourage pupils to cycle to school and to do so safely.

Young Drivers

We worked with the local Road Safety Group to encourage safe behaviours and good driving amongst young drivers and to provide positive role models amongst them. Several car shows were attended by the partnership, events which naturally attract large numbers of young drivers.

Working with Driving Instructors

We have trained seven driving instructors to register with us to provide the EPP training course to newly qualified drivers and older driver refresher drives for those who want to keep driving and keep themselves up to date and confident in their driving.

Motorcyclists

Face to face engagement events at popular motorcyclist destinations such as Kirkby Lonsdale, Settle Market Place and Ribbleshead Viaduct have proved a successful means of disseminating campaign messages directly to motorcyclists and an efficient method of targeting large numbers and listening to their concerns and suggestions.

Information packs have been distributed including the newly updated “Bikers Guide to North Yorkshire”. The route list also includes the A59 from Skipton to east of the A1 and the A65 from Skipton to Ingleton. It recommends further training, appropriate safer riding techniques and behaviours to reduce risk of injury. It is also available online through our



website www.roadwise.co.uk .

Image 20 - Motorcycle campaign engagement at Devil's Bridge, Kirkby Lonsdale



This year we piloted six “Biker Down”, first aid and crash scene management courses across the county. These were courses were fully booked up very quickly and give participants the opportunity to learn life-saving skills, particularly useful in our large rural county. They will be run again next year with Public Health and Police & Crime Commissioner funding and using Fire & Rescue Service First Aid Instructors working with our local Road Safety Officers.

Image 21 - Safe helmet removal session on Biker Down course

Cyclists

We promote safer cycling initiatives throughout the county, especially on the Tour de France, Tour de Yorkshire and other popular routes.

We also distribute cards and fliers to cycle shops, hire centres, guest houses and cafes on cycling routes to get safe cycling messages to cyclists who are riding our long distance routes such as the Way of the Roses. Additionally, "Riding the Routes" advice leaflet for cyclist have been produced and distributed widely.

The Road Safety Team also write to organisers of sportives and charity rides, sharing information on cyclist casualties and advice on best riding practice.



Image 22 - New Riding the Routes Advice Leaflet

New temporary roadside information boards have been deployed along route high priority routes, including Beamsley Lane, where there is a history of conflicts and cyclist casualties.

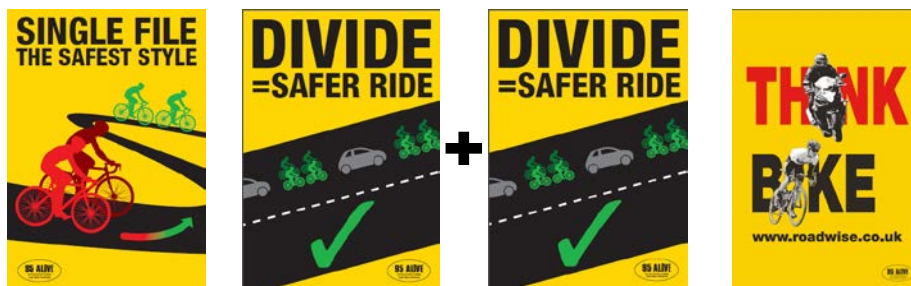


Image 23 - Roadside poster designs currently being trialled on popular cycling routes

Older People

This year only seven older drivers in Craven took up the offer of a free refresher drive. This is far fewer than we would expect, given the proportion of older drivers in the district for whom their car and keeping driving is crucial to independence, practical daily life and to meet up with friends and family. We will work hard to promote the scheme on Craven during the coming year.

Driving for Work

During 2015/16 The Driver Training Officer facilitated two safer driving for work seminars for NYCC staff in Craven and delivered four mini bus training sessions to school and communities drivers.

Community Engagement/ Local Partnership Working

The Road Safety team contributed to a number of events and initiatives working in partnership with Craven Community Safety Team and the Police Rural and Neighbourhood teams. This year the focus has centred on cyclist, motorcyclist and older driver safety.

In August the road safety partnership team attended the Kilnsey Show, which attracted approximately 5000 visitors in the Upper Dales. This show offers a valuable opportunity to engage with people from the most rural and isolated communities.

During the run up to the Christmas holidays, the Craven Road Safety Task Group held “Don’t Drink and Drive” events in Skipton, Grassington and Settle. This year the engagement events have include a focus on alcohol awareness, in particular it is common for people to underestimate the number of units of alcohol they have consumed and the time taken for alcohol to be processed and removed from the body. In June and July the Team also supported the Police drug and drink drive enforcement campaign with a series of road shows in town centres around the district.



Images 24 and 25 - Don't drink or drug drive banners deployed on the 95 Alive Exhibition Trailer

Speed Management

In October 2015, the administration of the Speed Management Protocol was handed over to the Police Traffic Bureau. Between October 2015 and July 2016, 25 speed concern enquires were passed to the Craven Road Safety Task Group for assessment. This resulted in 3 requests for speed matrix sign deployment and 3 requests for Police speed enforcement

Cluster sites

There are 170 cluster sites identified in North Yorkshire compared with a total of 154 the previous year. Of these 170 sites, 16 are located within Craven and details of these are contained on the next page. Of these, 4 are urban (40 mph or lower speed roads) and 12 are rural (over 40 mph limit roads). Of all Craven collisions in 2013-2015, 15% of collisions occurred at cluster sites; 20% of all collisions in Craven in 2015 occurred at cluster sites.

The collision prevention schemes identified, designed and delivered in 2016/17 to address cluster site collisions are-

- ◆ A65 Gargrave Road west of Wear pumping station – sign improvement scheme
- ◆ B6265 Dibbles Bridge – Railings added to bridge parapet to increase height to prevent cyclists from going over the bridge in the event of their losing control on this steep descent and sharp bend

Road Safety Engineering Activities – Craven

Collision cluster site locations

2016/17 NYCC Rank	Location	District	Site Type	Collision Sev. Factor	Cas Sev. Factor	Collisions			Total Collisions 2014-2015	Total Child Cas	Comments
						2013	2014	2015			
10	B6265 Dibbles Bridge - Hebden	Cra	rural	10	10	0	2	2	4	0	Road marking improvements installed in 2015, parapet level of bridge raised through the introduction of railings completed early April 2016. Continue to monitor site.
20	A65/A6131 The Bailey, Jnct - Skipton	Cra	rural	9	12	1	0	5	6	0	Engineering investigation on going. Fencing erected on verge March 2014
22	A6068 Main St/Ashville Terrace, Area - Cross Hills	Cra	urban	9	9	3	1	3	7	0	Engineering investigations are on-going.
28	A629 Skipton Rd Bend 370m South Of Cononley Lane - Farnhill	Cra	rural	7	16	2	2	0	4	1	Surfacing works undertaken in 2015, continue to monitor, no further action.
29	A65 Nr Ryecroft Farm, Bend - Newby	Cra	rural	7	16	3	1	0	4	0	Engineering investigation on going, investigating feasibility of surface improvements.
34	A59 / Heslaker Lane Jnct - Skipton	Cra	rural	7	10	2	2	1	5	0	No clear pattern to the collisions, site visit undertaken with no recommendations, continue to monitor, no further action.
36	A65/A59/A629, Rndbt - Skipton	Cra	rural	7	9	1	0	5	6	0	Engineering investigation on going.
68	A59 /B6160 Bolton Rd, Rndbt - Bolton Bridge	Cra	rural	6	7	2	2	1	5	0	2015/16 sign improvement scheme undertaken, replaced chevrons on roundabout approach with flexi-chevrons, continue to monitor, no further action.
71	A65 Cleatop 250m South Of Rndbt With B6480	Cra	rural	6	7	2	1	1	4	0	Surface dressing of area undertaken in summer 2016, hazard marker posts installed in 2015, no further action, continue to monitor.
82	A65 nr Woombor Bridge - Gargrave	Cra	rural	5	8	3	1	0	4	1	Road surface and sign improvements undertaken in 2013/14, continue to monitor site.
92	A629/B6172 Station Rd, Rndbt - Kildwick	Cra	urban	5	7	1	0	3	4	0	Engineering investigation on going
135	A65 Gargrave Road west of Wear pumping station	Cra	rural	4	6	1	2	1	4	1	Sign improvement scheme to be implemented in 2016.
142	A629 Skipton Rd/Cononley Ln, Jnct - Farnhill	Cra	rural	4	5	1	0	3	4	0	Pedestrian island installed on A629 in 2015 alongside surface and sign improvements.
147	A59/Gargrave Rd, Jnct - Broughton	Cra	rural	4	5	1	1	2	4	0	No clear pattern to the collisions, continue to monitor, no further action.

Reported Road Casualties in North Yorkshire: Annual Report 2015

2016/17 NYCC Rank	Location	District	Site Type	Collision Sev. Factor	Cas Sev. Factor	Collisions			Total Collisions 2014-2015	Total Child Cas	Comments
						2013	2014	2015			
158	A6069 Broughton Rd / Carleton New rd / rail station , Jnct - Skipton	Cra	urban	4	4	1	0	3	4	1	Engineering investigation on going
168	A6069 Swadford St/ Keighley Rd/ Caroline Square, Jnct - Skipton	Cra	urban	4	4	1	1	2	4	0	Engineering investigation on going

Harrogate district (Area 6)

Harrogate district in brief

- ◆ In total, five people (all adults), were **killed** in 2015 in the Harrogate District against seven fatalities (all adults) recorded in 2014. Amongst the fatalities, were 2 car drivers, 2 pedestrians and a pedal cyclist.
- ◆ The number of people **killed or seriously injured (KSI)** was 116 in 2015, an increase from 108 in 2014. In terms of road user groups, the number of KSI casualties has increased for P2W (+8), pedestrians (+2), goods vehicles (+2), and other vehicle types (+1), the number of car occupants reduced (-5).
- ◆ The total number of **casualties** reported to the police in 2015 was 658, up 9% on the previous year (604). The biggest increase was in the number of car occupants (+36), though there were also increases in the number of goods vehicles (+13), the number of P2W (+10), the number of pedestrians (+9) and other vehicle types (+9); there was a reduction seen in the number of pedal cyclists injured (-23).
- ◆ In 2015, **child KSI casualties** reduced by 3 (-38%) from 8 in 2014 to 5 in 2015. The 5 KSI child casualties were 3 pedestrians, 1 car passenger, and 1 bus passenger.
- ◆ In Harrogate district, a total of 51 **cyclists** (2 children) were injured against 72 (5 children) in 2014. This decrease is different from to the number of cyclist KSI (21) which increased in 2014 (19).
- ◆ In 2015, the number of **pedestrian** casualties increased by 22% to 51. Pedestrian KSI also increased to 14 this year from the 12 recorded in 2014. There were 3 child pedestrian KSI casualties reported in 2015 (up from 1 in 2014).
- ◆ The number of **powered two wheeler (PTW)** casualties has increased by 19% to 50 in 2015 from 41 in 2014. An increase is seen amongst PTW KSI (24) which is 8 more than the 16 recorded the previous year.
- ◆ A total of 458 **road collisions** that resulted in someone being injured were reported to the police in 2015, 12 more than 2014. This total works out at an average of 38 collisions per month or 10 per week.

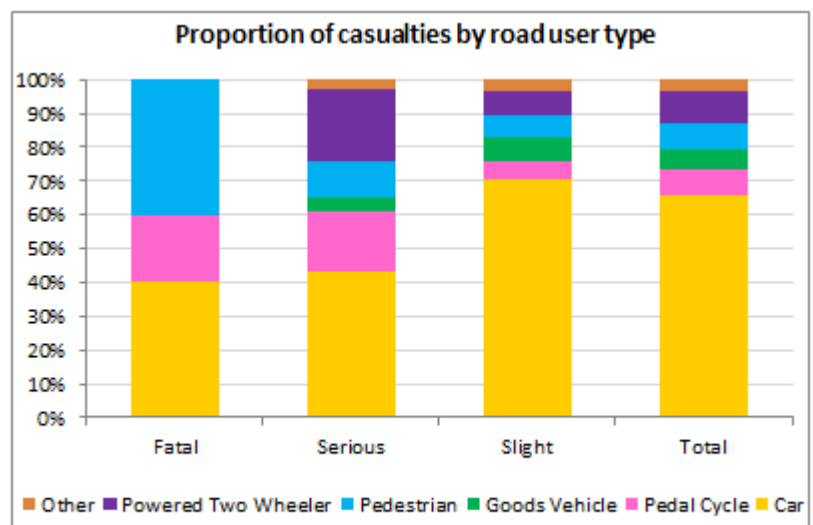


Figure 22 - Proportion of all casualties by road user type in 2015 - Harrogate
 Source - Road Safety & Travel Awareness, North Yorkshire County Council