

Harrogate district (Area 6)

Harrogate district in brief

- ◆ In total, five people (all adults), were **killed** in 2015 in the Harrogate District against seven fatalities (all adults) recorded in 2014. Amongst the fatalities, were 2 car drivers, 2 pedestrians and a pedal cyclist.
- ◆ The number of people **killed or seriously injured (KSI)** was 116 in 2015, an increase from 108 in 2014. In terms of road user groups, the number of KSI casualties has increased for P2W (+8), pedestrians (+2), goods vehicles (+2), and other vehicle types (+1), the number of car occupants reduced (-5).
- ◆ The total number of **casualties** reported to the police in 2015 was 658, up 9% on the previous year (604). The biggest increase was in the number of car occupants (+36), though there were also increases in the number of goods vehicles (+13), the number of P2W (+10), the number of pedestrians (+9) and other vehicle types (+9); there was a reduction seen in the number of pedal cyclists injured (-23).
- ◆ In 2014, **child KSI casualties** reduced by 3 (-38%) from 8 in 2014 to 5 in 2015. The 5 KSI child casualties were 3 pedestrians, 1 car passenger, and 1 bus passenger.
- ◆ In Harrogate district, a total of 51 **cyclists** (2 children) were injured against 72 (5 children) in 2014. This decrease is different from to the number of cyclist KSI (21) which increased in 2014 (19).
- ◆ In 2014, the number of **pedestrian** casualties increased by 22% to 51. Pedestrian KSI also increased to 14 this year from the 12 recorded in 2014. There were 3 child pedestrian KSI casualties reported in 2015 (up from 1 in 2014).
- ◆ The number of **powered two wheeler (PTW)** casualties has increased by 19% to 50 in 2015 from 41 in 2014. An increase is seen amongst PTW KSI (24) which is 8 more than the 16 recorded the previous year.
- ◆ A total of 458 **road collisions** that resulted in someone being injured were reported to the police in 2015, 12 more than 2014. This total works out at an average of 38 collisions per month or 10 per week.

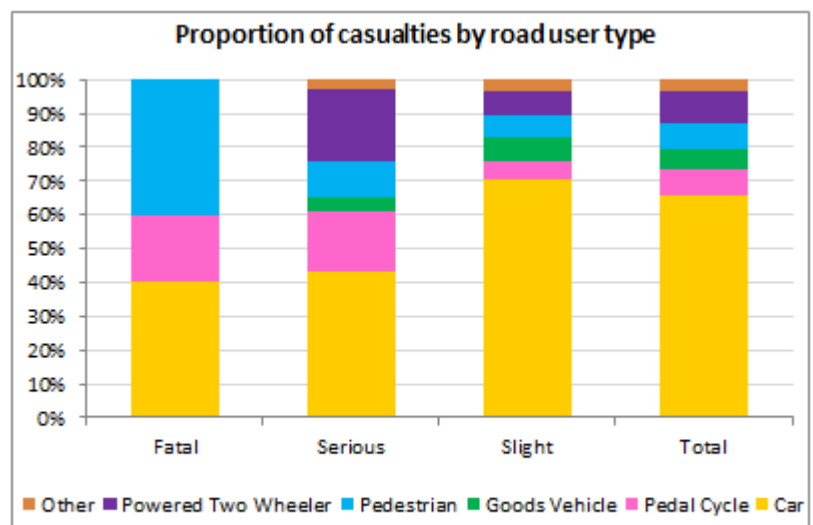


Figure 22 - Proportion of all casualties by road user type in 2015 - Harrogate
 Source - Road Safety & Travel Awareness, North Yorkshire County Council

All Casualties - Harrogate

In 2015 the total number of casualties went slightly above the overall downward trend line. This has happened in the past within the Harrogate district with the total number of casualties, though it then returned to a number below the trend line the following year. The number of casualties will require close monitoring in 2016 to ensure this is not the start of a different rising trend.

The increase in casualties was in numbers of people seriously or slightly injured in 2015, though the greatest actual increase was in the number of people slightly injured. Interestingly, the number of collisions reported has not increased as much as the number of casualties reported, indicating either more multiple vehicle collisions or collisions involving a higher number of vehicle passengers.

Though the year on year increase in all casualties in Harrogate is quite large (+9%), the change from the 5 year baseline is much less pronounced (+1%), and this change from the baseline is not showing to be statistically significant (i.e. not out the range that could be expected).

Facts about all casualties in 2015

- ◆ Car occupants make up the largest proportion of road casualties (66%) followed by PTW (10%), pedal cyclists (8%), pedestrians (8%) goods vehicles (6%) and other (3%).
- ◆ The number of casualties recorded in 2015, is 1% above the 2010-14 baseline average.
- ◆ The number of children injured (50) which represented 8% of all casualties in 2015, increased by 28% over the previous year (39).
- ◆ The number of cyclist casualties decreased in 2015, having increased in 2014. This is the biggest decrease seen in the number of cyclist casualties in the district since 2002.
- ◆ The car occupant group increased the greatest amount and within this the biggest age group increase was amongst the young people aged 16-24.
- ◆ It is feasible that the increase in Harrogate this year, like in Scarborough, could be in large part down to a greater number of young people learning to drive, having delayed doing so during recent years and/or linked to more young people obtaining employment.
- ◆ The increase has been completely seen in the number of rural casualties which has increased to 412 from 322 in 2014.

Harrogate	Baseline (Avg 10-14)	2012	2013	2014	2015	2015 vs baseline	Statistically significant change
Fatal	9	5	12	7	5	-45.7%	—
Serious	102	78	115	101	111	8.4%	—
Slight	539	567	518	496	542	0.6%	—
Total	651	650	645	604	658	1.1%	—
KSI	112	83	127	108	116	3.9%	—
Child KSI	7	7	9	8	5	-28.6%	—
Young Person KSI	24	17	30	16	20	-15.3%	—
Adult Person KSI	41	33	48	36	42	1.9%	—
Older Person KSI	30	20	26	36	32	8.1%	—
Elderly Person KSI	10	6	14	12	17	66.7%	—
Pedestrian KSI	13	9	20	12	14	11.1%	—
Cyclist KSI	15	7	20	19	21	38.2%	—
PTW KSI	20	15	17	16	24	18.8%	—
All Child Casualties	43	48	50	39	50	17.4%	—
All Cyclist Casualties	54	46	66	72	51	-6.3%	—

Table 18 - Reported road traffic casualties and severity since 2012 - Harrogate
 Source - Road Safety & Travel Awareness, North Yorkshire County Council

Killed or Seriously Injured (KSI) Casualties - Harrogate

In 2015, with a total of 116 KSI casualties, Harrogate has slightly risen above the long term downward trend line.

The number of KSI recorded in 2015 (116) is 8 more than in 2014.

The number of children seriously injured decreased by 3 over the previous year (6).

The increase in KSI in 2014 against 2014 is disappointing; but it is a small increase and is not showing as being a statistical significant increase.

Facts about KSI casualties in 2015

- ◆ The number of people killed or seriously injured in Harrogate increased by 8 (7%) to 116 in 2015.
- ◆ This result is associated with more PTW (+8), goods vehicle (+2), pedestrian (+2), pedal cycle (+2) KSI injuries in the district; the number of car occupants reduced (-5) and other types reduced (-1).
- ◆ 51% of the casualties in the Harrogate district are from the vulnerable road user groups. Of which 21% were PtW, 18% pedal cyclists and 12% pedestrians.
- ◆ Children KSI (5) represent 1% of all KSI in the district, the same as in 2014.

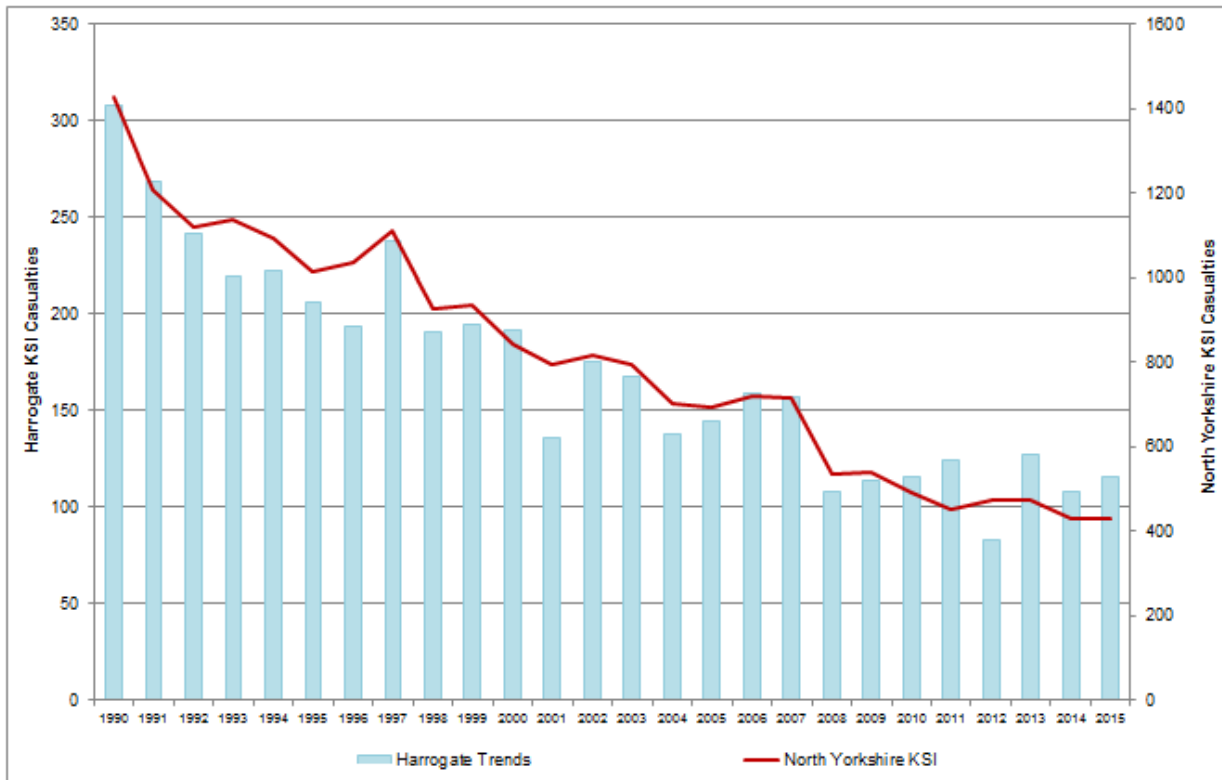


Figure 23 - Reported road traffic KSI casualty trends since 1990 - Harrogate
 Source - Road Safety & Travel Awareness, North Yorkshire County Council

Child Casualties - Harrogate

Child casualties in the district have followed an overall decreasing trend since 1999; with slight increases in 2003 and 2008. The lowest year ever for child casualties in the district since records began was 2010 (35). The second lowest year for child KSI casualties was 2014 (39). However there does appear to be a gradual upward trend in the total number of child casualties in the district since 2010, which needs further monitoring.

With a total of 5 child KSI casualties, the district has reduced slightly on the number in 2014 (8) and this year the proportion of child KSI casualties is the same as last year.

This year's child KSI result is 29% below the 2010-2014 baseline average (7), though numerically the numbers are small which makes the percentage changes look larger.

Car passenger casualties constitute the largest proportion of all child casualties in general (29) and pedestrian's the biggest proportion of the child KSI casualties in 2015 (3).

Facts about child casualties in 2015

- ◆ 23 of the 50 children injured were secondary school age, 20 were primary ages and 7 were pre-school age.
- ◆ Both child pedal cyclists were wearing cycle helmets.
- ◆ In the collisions involving children, a vehicle driver failing to look properly was the most frequent causation factor, which is in large part linked to the children injured within cars. The next 3 causation factors mentioned were pedestrian failing to look properly, vehicle driver careless, reckless or in a hurry or vehicle failing to judge other persons path or speed.
- ◆ Of the 12 pedestrian child casualties, 8 of the collisions occurred when the child pedestrian, stepped into the road without looking.
- ◆ In the 2 child pedal cyclist collisions, both were caused by a vehicle not looking, once this was the child pedal cyclists and once another car driver.

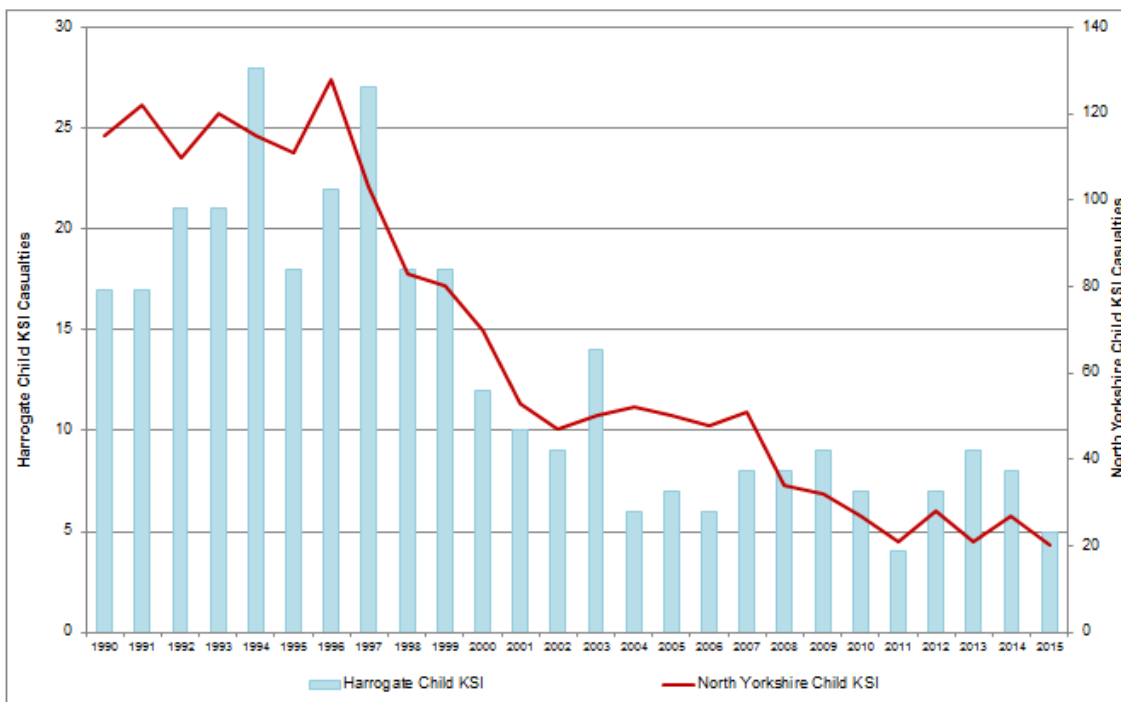


Figure 24 - Reported road traffic KSI child casualty trends since 1990 - Harrogate
Source - Road Safety & Travel Awareness, North Yorkshire County Council

Road Safety Education and Community Engagement - Harrogate

Children - Primary School

Last year 824 Year 5 and 6 primary school pupils at 39 schools completed the Bikeability cycle training programme learning their Highway Code and how to cycle on the roads.

This year we piloted a new Bikeability Plus training programme to 25 students at Tockwith school in Harrogate. This scheme extends the existing programme to younger children, teaching basic skills on push and glide bikes.

More than 2000 children from 90 schools attended the “Crucial Crew” multi-agency safety education event at Ripon Barracks. The children learned road safety advice and facts by taking part in active scenarios with follow up lesson information provided to their teachers

Children - Secondary School

The “Learn and Live” multi-agency presentation for sixth formers was held at 4 secondary schools and colleges: - Harrogate College, Harrogate Grammar, King James High school and Ripon High school.

We support secondary schools to deliver road safety lessons throughout the curriculum, with the benefit of our own specialist curriculum adviser.

A number of High Schools are now using cycling resources in Year 7 to support pupils cycling to school safely- which is good for their health and reduces school run congestion.

Young Drivers

Four new driver discussion groups were held in Ripon and Harrogate, attended by 34 new drivers on the Enhanced Pass Plus course.

Working with Driving Instructors

We had an additional 8 driving instructors complete their training with us and are currently providing the EPP training for new drivers and Older Driver refresher drives for more experienced drivers who want to keep up to date and driving confidently and safely. We would welcome more instructors to join the register.

Motorcyclists

Engagement events have been held to meet with motorcyclists in Pateley Bridge town centre.

The newly updated “Bikers Guide to North Yorkshire” was revised in 2015 to include the current top five high risk routes. These include the A64, risk routes list and the A59 from Skipton to east of the A1.

Two additional online videos highlighting the hazards along these high risk routes have been produced in 2015, highlighting the A171 and the A59. Along with advice on the

www.roadwise.gov.uk website, the “NYRides” videos use social media such as YouTube and Facebook, to raise awareness of hazards and consequences of risky behaviour through the channels that many motorcyclists frequently use.



Image 26 – Setting up for a Motorcyclist engagement event at Pateley Bridge

Cycling

Messages to cyclists focus on “keeping yourself safe”. Messages to the wider road user community raise awareness of their responsibilities towards vulnerable road users especially to look out for cyclists. The “Think Bike” theme also provides additional value supporting elements of the motorcycle safety campaign.

We promote safer cycling initiatives throughout the county, especially on the Tour de France and Tour de Yorkshire and other popular routes. The “Cycle Yorkshire, Ride the Routes” app uses maps and videos to provide advice on a range of issues including rural riding preparation, avoiding fatigue related collisions and hazard recognition and avoidance techniques. The app has now been converted to a website based platform and the 2015 Tour de Yorkshire routes added. www.ridetheroutes.co.uk

Image 27 – Screen image from the updated Cycle Yorkshire website

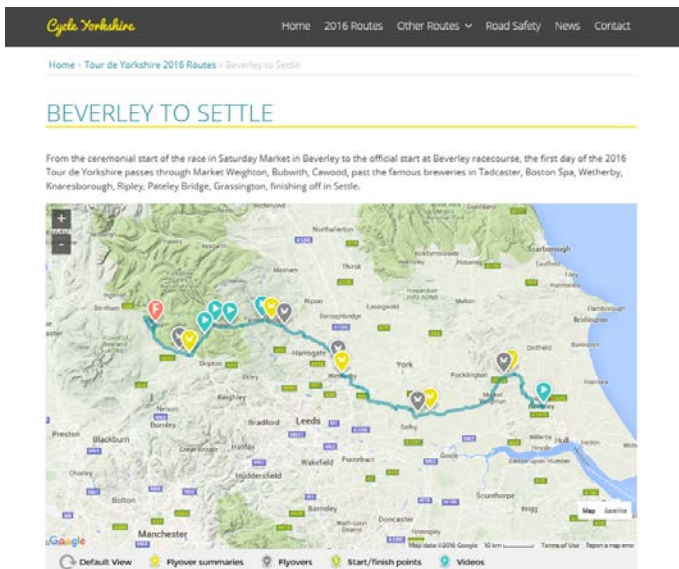


Image 28 - New Riding the Routes Advice Leaflet



We also distribute cards and fliers to cycle shops, hire centres, guest houses and cafes on cycling routes to get safe cycling messages to cyclists who are riding our long distance routes such as the Way of the Roses.

Additionally, "Riding the Routes" advice leaflet for cyclist have been produced and distributed widely.

The Road Safety Team also write to organisers of sportive and charity rides, sharing information on cyclist casualties and advice on best riding practice.

New temporary roadside information boards have been deployed along route high priority routes where there is a history of conflicts and cyclist casualties.

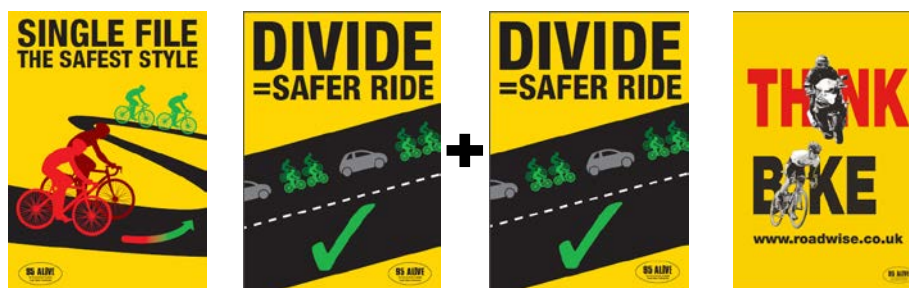


Image 29 - Roadside information posters

Specific works and additional signs have been installed on Greenhow Hill to help cyclists riding the Way of the Roses coast to coast route. This long descent can be under-estimated and some cyclists have crashed, mainly on the final section of the hill as it descends towards Pateley Bridge. The local councils and communities and cycling organisations and Sustrans worked with us to investigate exactly how cyclists cope with the hill and what best to do to help those who find it challenging. We continue to monitor it closely.

Older People

In Harrogate 16 older drivers have so far benefitted from the scheme this year.

This year the Driver Training Officer delivered an Older Driver Assessment training course to a further 6 Harrogate based driving instructors to enable them to deliver these refresher drives.

Driving at Work

During 2014/15 The Driver Training Officer facilitated two safer driving for work seminars for NYCC staff in Harrogate and Boroughbridge and delivered 4 mini bus training sessions for Beverley Park Outdoor Centre and Nidderdale High School staff in Pateley Bridge.

He also attended a number of meetings with local driving instructors to discuss improvements in delivery standards and delivered one Client Centred Learning course for instructors, which they themselves funded. This coaching skills programme aims to enhance teaching skills for the Instructor and improve the learning experience for the Pupil.

Community Engagement/ Local Partnership Working

The Road Safety Team contributed to a number of events and initiatives in partnership with the Armed Forces, including Army Health Fairs at the Army Foundation College, Pennypot, and the Army Air Corps at Dishforth to discuss and advise on road safety risks and concerns and safe and sustainable travel for service personnel and their families and civilian staff.



Image 30 - Instructors at the Army Foundation College try out our simulated driving challenges before the students arrive.



Image 31 - Students watch on keenly as other platoon members try out their driving skills on our interactive simulator.

During the run up to the Christmas holidays, “Don’t Drink and Drive” events were held in Harrogate and Ripon. The Summer campaign was launched in Harrogate this year. This year the engagement events have include a focus on alcohol awareness, in particular it is common for people to underestimate the number a units consumed and the time taken for them to leave the body.

Speed Management

In October 2015, the administration of the Speed Management Protocol was passed over to the Police Traffic Bureau. Fifty speed concern cases were outstanding at the time of hand over. Between October 2015 and July 2016, 72 speed concern enquires were passed to the Harrogate Road Safety Task Group for assessment. This resulted in 2 requests for speed matrix sign deployment, 1 engineering request and 2 requests for Police speed enforcement.

Cluster sites

There are 170 cluster sites identified in North Yorkshire compared with a total of 154 the previous year. Of these 170 sites, 66 are located within Harrogate and details of these are contained on the next page. The majority 35 are urban (40 mph or lower speed roads) and 31 are rural (over 40 mph limit roads). Of all collisions in Harrogate in 2013-2015, 8% occurred at cluster sites; 13% of all collisions in Harrogate in 2015 occurred at cluster sites.

The collision prevention schemes, identified, designed and delivered in 2016/17 to address cluster site collisions are-

- ◆ A61 Harrogate Rd/Burn Bridge – temporary sign erected to alert drivers to check indicators, further investigations on-going
- ◆ A6055 Harrogate Rd at Spellow Cottages, Arkendale – install hazard marker posts
- ◆ A658 Harrogate Rd at Nab Hill bend, North Rigton – sign improvement scheme
- ◆ A61 Harrogate Rd north of Bishop Monkton crossroads – sign improvement scheme

Road Safety Engineering Activities – Harrogate

Collision cluster site locations

2016/17 NYCC Rank	Location	District	Site Type	Collision Sev. Factor	Cas Sev. Factor	Collisions			Total Collisions 2013-2015	Total Child Cas	Comments
						2013	2014	2015			
3	A59/A168 Jnct - Allerton Grange	Hgt	rural	11	20	3	2	3	8	2	Highways England led scheme, with NYCC involvement, for improvements to junction 47 of A1(M) and A59. As part of this package of improvements the A59/A168 junction is proposed to be signalised. This scheme is currently in the design phase likely to be implemented 2017/18.
4	A61 Albert St /Raglan St - Jnct - Harrogate	Hgt	urban	11	13	1	2	6	9	0	No clear pattern with the collisions, continue to monitor, no further action.
5	A61 Harrogate Rd/A658, Buttersyke Bar Rndbt - Harrogate	Hgt	rural	11	11	2	5	1	8	0	Signing and lining improvements completed in April 2016, no further action. Continue to monitor.
7	A61 Harrogate Rd/Burn Bridge Ln, Jnct - Harrogate	Hgt	rural	10	17	4	1	3	8	2	Engineering investigation on going, Buttersyke Bar roundabout in close proximity to the south. Temporary sign, 'Cancel indicators' installed July 2016, deceleration lane scheme currently being designed.
8	A59 High Street/ Spa Ln, Jnct & level crossing - Starbeck	Hgt	urban	10	11	2	0	5	7	0	No clear collision pattern, continue to monitor, no further action. Collisions in this area are also being reviewed as part of discussions with Network Rail.
9	A61 Leeds Rd/Leadhall Ln/Hookstone Rd, Jnct - Harrogate	Hgt	urban	10	11	3	4	2	9	0	2015/16 signal improvements and lane alterations to the junction, continue to monitor.
11	Market Place, Area - Knaresborough	Hgt	urban	10	10	1	3	2	6	0	Engineering investigation on going
12	A59 Skipton Rd/Rowden Ln/ Burley Bank Rd, Jnct - Harrogate	Hgt	rural	9	23	2	2	4	8	4	Sign improvement scheme being designed for delivery in 2016/17.
13	A658 Harrogate Rd/Dunkeswick Ln/Hall Green Ln, Jnct - North Rigton	Hgt	rural	9	20	1	1	5	7	0	Package of improvement works undertaken in 2015/16 involved improvement to advanced direction signs, refreshed red surfacing and road markings, installation of street lighting.
14	B6162 Pot Bank/B6161 Otley Rd, Jnct - Beckwithshaw	Hgt	urban	9	19	4	0	2	6	4	2014 scheme involved alterations to the road markings, surface improvements, installation of street lighting and sign improvements. No further action, continue to monitor.
16	A59 Kex Gill Rd by Keg Gill Farm - Blubberhouses	Hgt	rural	9	17	2	3	1	6	1	No clear pattern to the collisions, no further action, continue to monitor site.

Reported Road Casualties in North Yorkshire: Annual Report 2015

2016/17 NYCC Rank	Location	District	Site Type	Collision Sev. Factor	Cas Sev. Factor	Collisions			Total Collisions 2013-2015	Total Child Cas	Comments
						2013	2014	2015			
19	A59 Knaresborough Rd/Prospect Rd, Area - Harrogate	Hgt	urban	9	12	4	3	2	9	1	No clear collision pattern, continue to monitor, no further action.
27	A59 Skipton Rd/Woodfield Rd/King's Rd, Jnct - Harrogate	Hgt	urban	8	9	1	4	1	6	0	No clear collision pattern, continue to monitor, no further action.
30	A61 Harrogate Rd north of Bishop Monkton xrds	Hgt	rural	7	15	1	2	2	5	4	Sign improvement scheme being designed for delivery in 2016/17.
32	A59 Interchange/A1 Jnct 47, Western Entrance to Rndbt - Allerton Grange	Hgt	rural	7	12	1	4	2	7	2	Highways England led scheme, with NYCC involvement, for improvements to junction 47 of A1(M), currently in design phase with construction due in 2017/18, will involve signalling of roundabout.
33	A658 Harrogate Rd at Nab Hill, bend - North Rigton	Hgt	rural	7	10	1	2	2	5	0	Engineering investigation on going.
35	A6040 Knaresborough Rd/North Park Road, Jnct - Harrogate	Hgt	urban	7	9	4	2	1	7	1	Engineering investigation on going
40	A59 Devonshire Pl/Regent Pde, Jnct - Harrogate	Hgt	urban	7	9	3	0	3	6	0	No clear collision pattern, continue to monitor, no further action.
45	A59 Knaresborough Rd/St Andrew's Cres/Lancaster Park Rd, Jnct - Harrogate	Hgt	urban	7	7	4	1	1	6	1	No clear collision pattern, continue to monitor, no further action.
50	A61 Station Parade/Bower St, Area - Harrogate	Hgt	urban	7	7	0	2	3	5	0	Engineering investigation on going
52	A61 Leeds Rd By Brookside Nursery - Pannal	Hgt	rural	7	6	3	1	1	5	0	No clear collision pattern. Continue to monitor, no further action.
53	A59 Skipton Rd/A661 Wetherby Rd/Knaresborough Rd, Rndbt - Harrogate	Hgt	urban	7	6	1	2	1	4	0	No clear collision pattern, continue to monitor, no further action.
56	A1(M) 500m south of junction 42, Lumby	Hgt	rural	6	12	2	0	3	5	0	Highways England site.
57	A59 High St/Belmont Avenue, area - Starbeck	Hgt	urban	6	11	3	2	1	6	0	No clear collision pattern, continue to monitor, no further action.
58	B6265/Moor Ln, Jnct - Great Ouseburn	Hgt	rural	6	10	0	3	1	4	0	2015 works carried out following fatal collision investigation, involved sign improvements and replacing reflective road studs. No further action necessary, continue to monitor.
59	A6055 Harrogate Rd at Spellow Cottages, straight - Arkendale	Hgt	rural	6	9	4	0	0	4	0	Hazard Marker Post scheme to be designed and installed in 2016/17.
63	A661 Wetherby Rd by Ucl to Rudfarlington - Harrogate	Hgt	rural	6	8	1	2	2	5	1	Engineering investigation on going.
67	A61 Ripon By-Pass/ B6265 Boroughbridge Rd, Rndt - Ripon	Hgt	rural	6	7	2	1	2	5	1	Signing and lining improvement scheme undertaken in early 2016 as part of wider road surfacing works. No further action, continue to monitor.

Reported Road Casualties in North Yorkshire: Annual Report 2015

2016/17 NYCC Rank	Location	District	Site Type	Collision Sev. Factor	Cas Sev. Factor	Collisions			Total Collisions 2014-2015	Total Child Cas	Comments
						2013	2014	2015			
69	A658/B6161 Leathley Ln/Castley Ln, Jnct - Leathley	Hgt	rural	6	7	1	2	2	5	0	Engineering investigation found no recommendations, 3 x collisions involved failed to give way to oncoming traffic by right turning vehicles, 2 x collisions involved loss of control. No further action, continue to monitor.
70	A61 Ripon Rd / B6165 roundabout - Ripley	Hgt	rural	6	7	0	3	1	4	0	Sign improvements to be undertaken on roundabout approach in 2016/17.
72	A59 Skipton Rd/Dragon Parade, Jnct - Harrogate	Hgt	urban	6	7	1	3	1	5	0	No clear collision pattern, continue to monitor, no further action.
73	A61 Ripon Rd/jenny Field Dr/coppice Ave, Jnct - Harrogate	Hgt	urban	6	6	3	1	0	4	2	Engineering investigation on going
75	A59 / Station Rd, Jnct - Knaresborough	Hgt	rural	5	10	0	1	2	3	2	Engineering investigation on going.
76	A1(M) 320m South of Highfields Ln, area - Kirby Hill	Hgt	rural	5	10	2	0	2	4	1	Highways England site.
77	A59 Skipton Rd/B6451 Brame Ln, Jnct - Kettleasing	Hgt	rural	5	10	3	2	0	5	0	Engineering investigation found no feasible recommendations, continue to monitor, no further action.
80	A661 Wetherby Rd/rudding Ln/forest Ln, Jnct - Harrogate	Hgt	urban	5	9	1	1	2	4	0	Engineering investigation on going
83	A59 Kex Gill Rd by Ravens Peak, Blubberhouses	Hgt	rural	5	8	1	0	3	4	1	No clear collision pattern continue to monitor, no further action.
84	A661/Plumpton Rocks, Jnct - Follifoot	Hgt	rural	5	8	2	0	2	4	0	Engineering investigation on going
96	A61 Cheltenham Crescent area - Harrogate	Hgt	urban	5	6	0	3	2	5	1	No clear collision pattern, continue to monitor, no further action.
99	B6165 Ripley Road by Nidd Hall	Hgt	rural	5	6	2	1	1	4	0	No pattern to collisions, no further action, continue to monitor site.
101	A61 Station Parade / Station Bridge, Xrds - Harrogate	Hgt	urban	5	6	3	1	1	5	0	No clear collision pattern, continue to monitor, no further action.
104	A61 Leeds Rd/B6162 Otley Rd/A6040 York Pl, Rndbt - Harrogate	Hgt	urban	5	6	2	1	1	4	0	No clear collision pattern, continue to monitor, no further action.
109	C422 Market Pl - Ripon	Hgt	urban	5	5	1	2	1	4	1	Engineering investigation found no recommendations, continue to monitor, no further action.
110	A59 Skipton Rd/Grove Rd, Jnct - Harrogate	Hgt	urban	5	5	2	2	0	4	1	Small scale improvements to tactiles installed in 2014, alongside sign improvements. Continue to monitor site, no further action.

Reported Road Casualties in North Yorkshire: Annual Report 2015

2016/17 NYCC Rank	Location	District	Site Type	Collision Sev. Factor	Cas Sev. Factor	Collisions			Total Collisions 2014-2015	Total Child Cas	Comments
						2013	2014	2015			
112	A6040 York Pl/Station Pde/South Park Rd, Jnct - Harrogate	Hgt	urban	5	5	2	2	0	4	1	No clear collision pattern, continue to monitor, no further action.
117	Harrogate Rd/Morrison's, Area - Ripon	Hgt	urban	5	5	1	0	3	4	1	Engineering investigation on going
119	A59 Knaresborough Rd /Rydal Rd/Stanhope Dr, Jnct - Harrogate	Hgt	urban	5	5	1	2	1	4	0	No clear collision pattern, continue to monitor, no further action.
123	A59 Skipton Rd/a61 Ripon Rd, Rndbt - Harrogate	Hgt	urban	5	5	1	0	3	4	0	Engineering investigation on going
124	Cambridge Rd/Cambridge Crescent, Jnct - Harrogate	Hgt	urban	5	5	2	0	2	4	0	Engineering investigation on going
138	A59 High Street/B6163 Gracious St, Jnct - Knaresborough	Hgt	urban	4	5	0	2	2	4	2	Engineering investigation on going
143	A61/Dunkeswick Ln, Jnct - Harrogate	Hgt	rural	4	5	2	1	1	4	0	Engineering investigation found no recommendations, continue to monitor, no further action.
145	A6055 Harrogate Rd/West Field Ln/Arkendale Rd, Jnct - Arkendale	Hgt	rural	4	5	2	1	1	4	0	2013/14 scheme to improve signs and cut back vegetation completed, continue to monitor site.
146	A658/A661 Wetherby Rd, Rndbt - Harrogate	Hgt	rural	4	5	1	1	2	4	0	Engineering investigation on going
149	A59/Station Rd, Jnct - Whixley	Hgt	rural	4	5	2	1	1	4	0	No recommendation from traffic engineering investigation, continue to monitor.
150	A1(M) at J48 - Boroughbridge	Hgt	rural	4	5	0	2	2	4	0	Highways England site.
153	A61 Station Prd by Bus Station - Harrogate	Hgt	urban	4	4	3	1	0	4	2	Engineering investigation found no recommendations, continue to monitor, no further action.
155	A59 Knaresborough Rd.Swarcliffe Rd jnc - Harrogate	Hgt	urban	4	4	1	1	2	4	1	Engineering investigation on going
159	A59 Skipton Rd/B6161 Otley Rd/B6161 Oaker Bank, Rndbt - Harrogate	Hgt	rural	4	4	1	1	2	4	0	Engineering investigation on going
160	A61/C166 Melmerby Green Ln, Jnct - Melmerby	Hgt	rural	4	4	1	1	2	4	0	No clear collision pattern continue to monitor, no further action.
161	A1, By A6055 Flyover - Boroughbridge	Hgt	rural	4	4	1	1	2	4	0	Highways England site.
163	A59 Knaresborough Rd/Kingsley Rd /Wedderburn Av, Jnct - Harrogate	Hgt	urban	4	4	2	0	2	4	0	No clear collision pattern, continue to monitor, no further action.
165	A61 Leeds Rd/St George's Av/St Mark's Av, Jnct - Harrogate	Hgt	urban	4	4	1	1	2	4	0	No clear collision pattern, continue to monitor, no further action.
166	A59 Knaresborough Rd / Jesmond Rd / St Andrews Crescent - Harrogate	Hgt	urban	4	4	1	3	0	4	0	Engineering investigation found no recommendations, continue to monitor, no further action.
170	Station Avenue by the cinema, Harrogate	Hgt	urban	4	4	1	1	2	4	0	Engineering investigation on going