

## Hambleton District (Area 2)

### Hambleton district in brief

- ◆ Seven people, all of whom were adults, were **killed** on Hambleton's roads during 2014 compared to five adults, in 2013. The 7 fatalities were 4 car occupants, 2 in other vehicles, and 1 PTW rider.
- ◆ The number of people **killed or seriously injured (KSI)** was 62 in 2013 and increased to 67 in 2014. In terms of road user groups, the number of KSI casualties has increased among pedal cyclists (+5), PTW riders (+1) and other vehicle type casualties (+6). The number decreased amongst car occupants (-5), and pedestrian's (-2). None of these changes are significant in statistical terms.
- ◆ The total number of **casualties** in road collisions reported to the police in 2014 was 396, up 16% on 2013 (333). This increase is mirrored by those in cars which saw a 21% increase in casualties in 2014, pedal cyclists and other vehicle casualties also increased (from 19 to 30 and 25 to 41 respectively); the groups that decreased were pedestrians from 21 in 2013 to 12 in 2014 and the number of PTW casualties from 36 in 2013 to 32 in 2014.
- ◆ No **children** were KSI in 2014, as in 2013.
- ◆ The number of **cyclist** casualties has increased by 58% from 19 in 2013 to 30 in 2014, two of the pedal cyclist casualties in 2014 were children.
- ◆ **Pedestrian** casualties reduced by 43% from 21 in 2013 to 12 in 2014. The reduction is more pronounced amongst pedestrian KSI (2) which is 50% less than the total (4) recorded the previous year. But these are very small numbers so percentages can look very large.
- ◆ The number of **powered two wheeler (PTW)** casualties has decreased by 11% from 36 in 2013 to 32 in 2014. The decrease is not mirrored amongst PTW KSI (16) which is 7% more than the total (15) recorded the previous year.
- ◆ A total of 246 **road collisions** that resulted in someone being injured were reported to the police in 2014, 5% more than in 2013 (234). This works out at an average of 21 collisions per month or 5 per week.

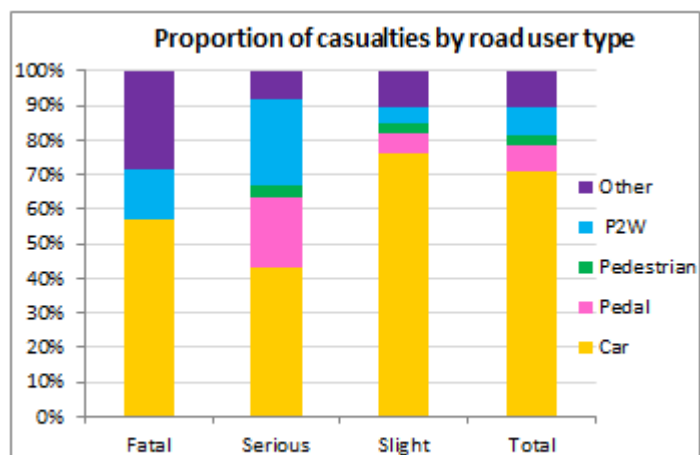


Figure 9 - Proportion of all casualties by road user type in 2014 - Hambleton  
Source - Road Safety & Travel Awareness, North Yorkshire County

## All Casualties - Hambleton

The number of road casualties reported to the Police in Hambleton has seen an upturn in 2014 after the reduction in 2013. A regular wave pattern (up one year and down the next) has continued since 2006 and this may suggest that 2015 will be better than 2014. The overall trend is still downward.

In 2014, the district has recorded 63 more casualties compared to the previous year. The increase is mainly explained by the higher number of Car occupant casualties (up by 49). Further increases were seen in the number of pedal cyclist casualties (up by 11), and other casualty types (up by 16). Decreases were seen for the number of pedestrian casualties which reduced from 21 to 12 (-9).

We have broken down this data to find that the number of casualties on NYCC roads in the direct rose by 8% and those on Highways England (trunk) roads, rose by 78%. There are major works on the A1(M) which may have an effect but we have brought this to the attention of Highways England and await their response.

The district saw an overall increase in road casualties of 1% from the baseline, which is different from the 7% reduction in the number of casualties recorded in North Yorkshire overall.

### Facts about all casualties in 2014

- ◆ There were 246 crashes leading to casualties in 2014; resulting in 63 more casualties than in 2013 (a 19% increase).
- ◆ Car occupants make up the largest proportion of road casualties (71%); followed by other vehicle types (10%), powered two wheelers (8%), pedal cyclists (8%) and pedestrians (3%).
- ◆ The number of casualties recorded in 2014, is 1% above the 2009-13 district average.
- ◆ The number of children injured (33) which represent 8% of all casualties in 2014; is a higher proportion than the 5% in 2013.
- ◆ Cyclist casualties increased to 30 in 2014 which is now 58% above the 2009-13 average (19).
- ◆ There was an average of 21 collisions per month or 5 per week in which someone was hurt.

Hambleton	Baseline (avg 09-13)	2011	2012	2013	2014	2014 vs baseline	Statistically significant change
Fatal	6	9	9	5	7	12.9%	---
Serious	74	68	93	57	60	-18.7%	---
Slight	311	309	306	271	329	5.9%	---
Total	391	386	408	333	396	1.4%	---
KSI	80	77	102	62	67	-16.3%	---
Child KSI	3	1	6	0	0	-100.0%	---
Young Person KSI	15	11	20	16	26	78.1%	---
Older Person KSI	28	28	38	21	30	7.9%	---
Pedestrian KSI	5	6	9	4	2	-61.5%	---
Cyclist KSI	7	7	16	7	12	66.7%	---
PTW KSI	16	18	11	15	16	0.0%	---
All Child Casualties	26	32	28	18	33	27.9%	---
All Cyclist Casualties	19	16	34	19	30	56.3%	---

Table 11 - Reported road traffic casualties and severity since 2011 - Hambleton  
Source - Road Safety & Travel Awareness, North Yorkshire County Council

## Killed or Seriously Injured (KSI) Casualties - Hambleton

In 2014, with a total 67 KSI casualties, Hambleton has recorded a total that is 16% below the 2009-13 average (80).

The year saw a decrease to the number of car occupant KSI casualties which has fallen by 14% over the previous year. Pedal cyclist KSIs were up by 5 from 7 in 2013.

The number of KSI (0) amongst children (0-15 years old) has stayed the same as in 2013.

The increase in KSI in 2014 against 2013 is disappointing; however, as shown in the graph below, KSI figures have followed a reducing trend since 2008, with the exception of 2012.

### Facts about KSI casualties in 2014

- ◆ The number of people killed or seriously injured increased by 16% to 67 in 2014.
- ◆ The three most vulnerable road user groups (Pedestrian, Cyclist and PTW riders), between them, account for 45% of all KSI casualties.
- ◆ The increase in KSI casualties in 2014 is mainly associated with an increase in cyclists (+5), and "other" casualties (+6).
- ◆ The seven "other" vehicle type KSI casualties recorded in 2014 were 2 van drivers, 1 bus passenger, 1 taxi driver, 2 Light goods vehicle drivers and 1 heavy goods vehicle driver.

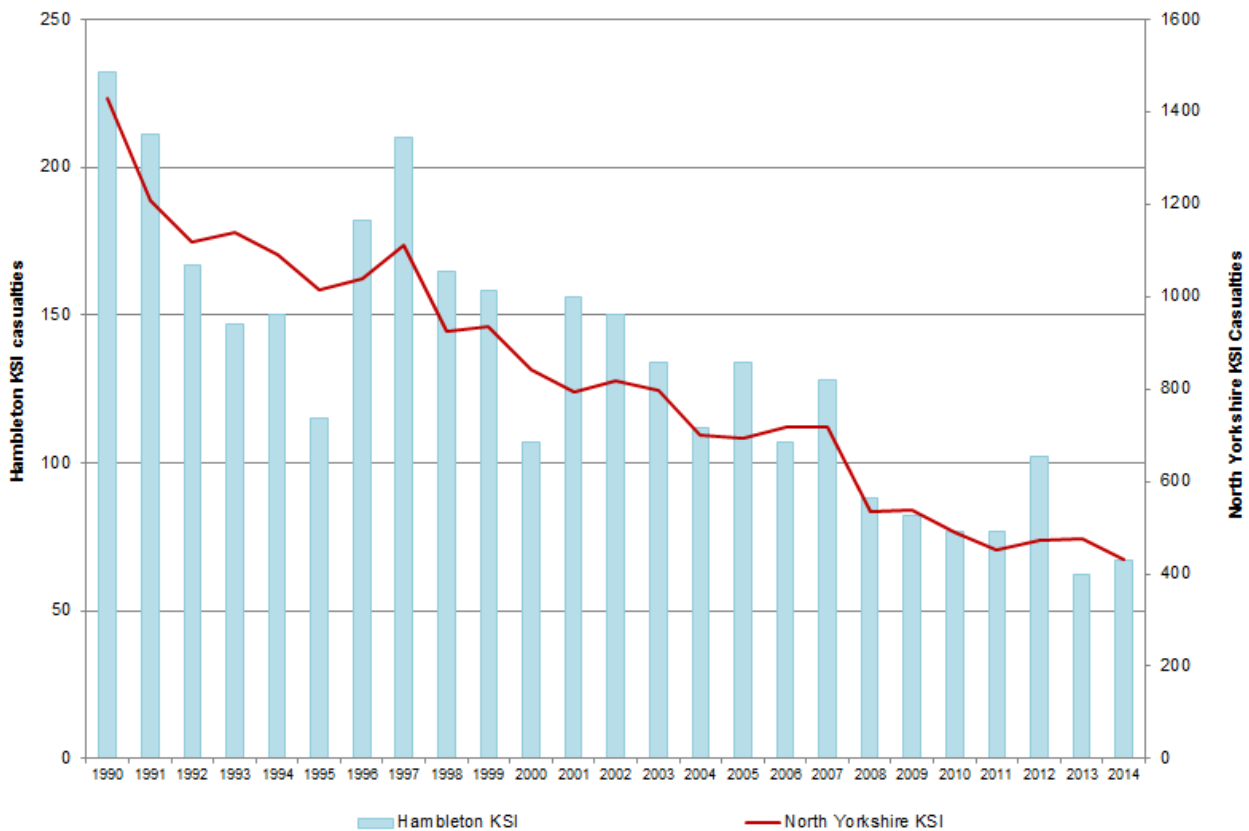


Figure 10 - Reported road traffic KSI casualty trends since 1990 - Hambleton  
Source - Road Safety & Travel Awareness, North Yorkshire County Council

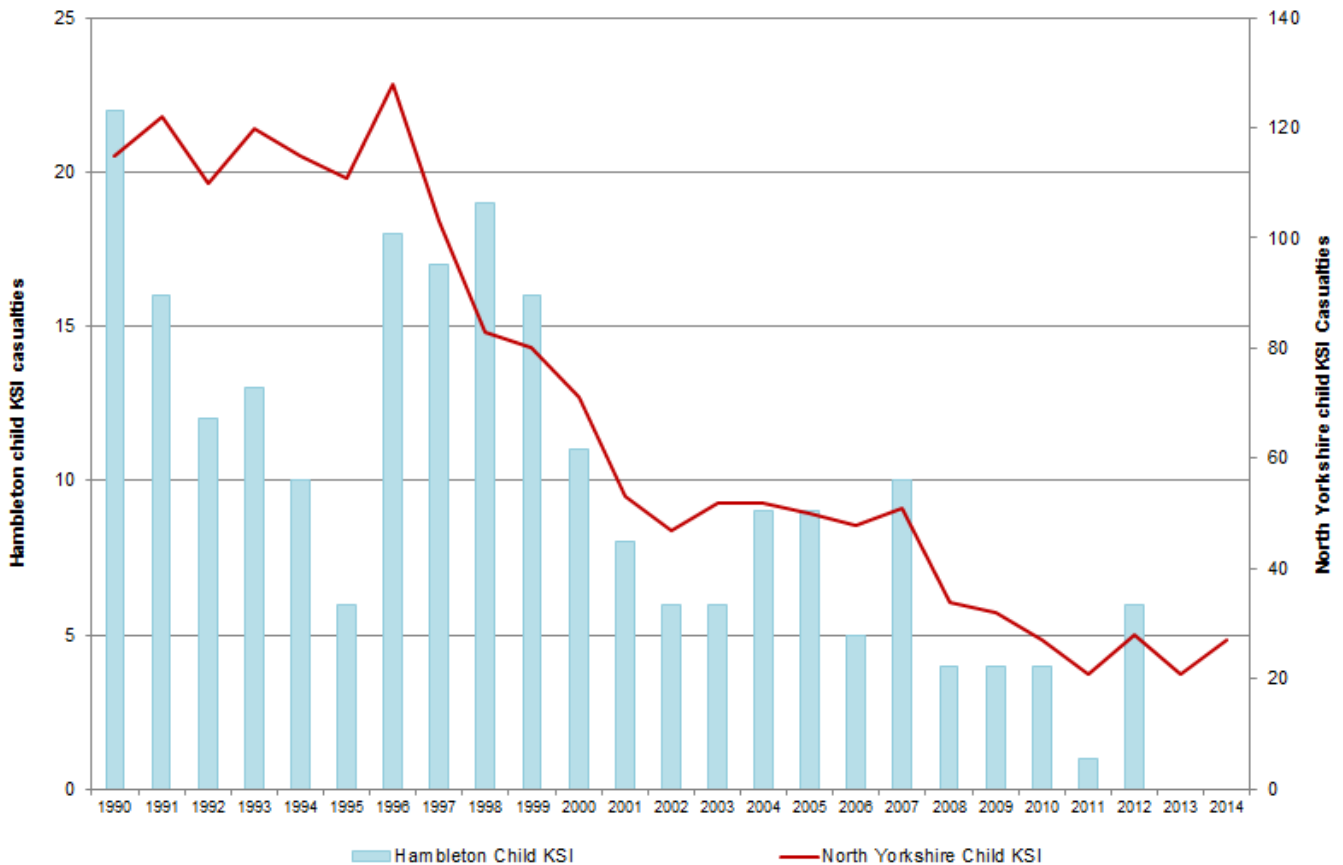
## Child Casualties - Hambleton

In 2014 there were 33 children slightly injured within the Hambleton district, this is the highest number since 2008 but is not a statistically significant change beyond normal fluctuations compared to the 2009-13 baseline average of 26.

The total number of child KSI casualties (0) recorded in 2014 is the same as in the previous year.

This year's overall child casualty numbers show an increase of 27% against the 2009-13 baseline average, with an 83% increase since the previous year i.e. from 18 to 33.

The increase in child casualties is mainly associated with an increase in child car passengers from 15 to 29 (+51%), though child pedal cyclists also increased from 0 to 2. The number of child pedestrian casualties reduced from 3 to 2.



**Figure 11 - Reported road traffic KSI child casualty trends since 1990 - Hambleton**  
 Source - Road Safety & Travel Awareness, North Yorkshire County Council

## Road Safety Education and Community Engagement - Hambleton

### Children - Primary School

In October Be Bright Be Seen messages were delivered across Hambleton via schools and radio and poster campaigns.

Approximately 2000 children from 80 schools across Hambleton and Richmondshire attended the Crucial Crew multi-agency safety event where they learned about the importance of wearing seatbelts and appropriate behaviour in the car.

A travel awareness/safer parking month was held at Broomfield School, Northallerton, when students and parents were encouraged to walk, cycle or scoot all or part of their journey to school. The initiative used a parent's charter, assemblies, a reward scheme, outdoor banners and face to face communication with parents which has resulted in improvements to parking congestion in and around the school.



Image 6 – A cycling skills event



Image 7 – Broomfield Primary School walk to school with Spike the Road Safety Hedgehog

### Children - Secondary School

The NYCC 'Drive Alive' event that addresses young/potential drivers and passengers, potential risks and responsibilities, was delivered at Northallerton College (now Northallerton School and 6th form).

Separate young driver/passenger presentations were delivered to students at Thirsk and Easingwold schools. All year 7 pupils at the Allertonshire School (now Northallerton School and 6th form) attended a presentation on In-car safety and using seatbelts.



The annual road safety discussion morning was held with at risk youngsters from Stokesley School, the focus being pedestrian safety and passenger power. The Road Safety Officer attended Stokesley Schools “safety focus day” and presented to the students on in-car safety.

### Young Drivers

Four evening workshops were held during the period attended by 20 young drivers from across Hambleton and Richmondshire.

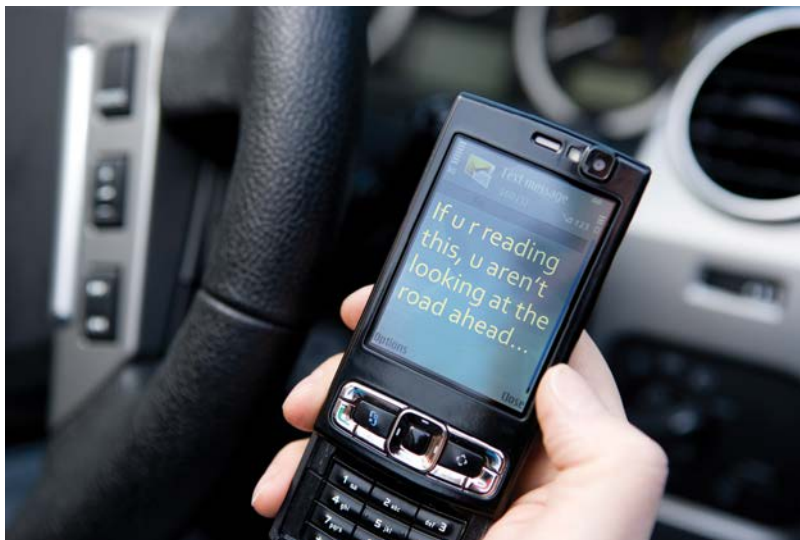


Image 8 – Mobile phone awareness campaign

### Driving Instructors

Local Driving Instructors attended sessions to find out more about improved standards and professional practice by the Road Safety Teams specialist Driver Training Officer.

We currently have 8 active driving instructors who contribute to road safety in Hambleton by delivering the EPP training and Older Driver refresher sessions. We would welcome more!

### Motorcyclists

Face to face engagement at popular motorcyclist destinations across Hambleton and Richmondshire such as Manor Café at Bellerby and Helmsley Market Square, where bikers using the B1257 gather, has proved a successful means of disseminating information directly to motorcyclists and listening to their concerns, views and suggestions.

We continue to add to our online videos highlighting the hazards along two of the high risk routes (the B1222 and B1257).

### **Cyclists**

Over 550 Year 5 and 6 primary school pupils took part in the Bikeability cycle training programme over the last year, learning their Highway Code and how to cycle on the roads.

Cycling awareness sessions have been held in playgrounds for children too young to attend Bikeability training.

Information and advice to promote and encourage cycling for adults commuting and family leisure has been provided at summer events in the district.

A number of Tour de Yorkshire events have been organised involving cycle skills and road safety awareness sessions for families.

An older cyclist session was held on the grounds of East Cowton primary school for more senior residents of the village wanting to get back on their bikes and proved to be very positive as well as having lots of laughs!

### **Older People**

Five older driver presentations were delivered in Easingwold, Thirsk, East Cowton and two in Northallerton. Refresher drives for drivers over 50 have been attended by 89 drivers from across Hambleton and Richmondshire, to provide them with driving tips, techniques and advice,

### **Occupational Road Risk**

A number of initiatives have been delivered to support local businesses including Safe Driving for Work presentations; training for vehicle safety checks; trailer, minibus and HGV training; practical driver training and driving risk management advice.

### **Community Engagement/ Local Partnership Working**

The Road Safety Officer contributed to a number of events and initiatives with the various military bases in the area. RAF Leeming held its annual Road Safety week which consisted of driving assessments, presentations and banners and poster displays throughout the base. Similar events were held at RAF Linton on Ouse and with the Royal Artillery at Alanbrooke Barracks, Topcliffe.

Road Safety evenings were held with Cubs and Brownie packs across the area.

The Road Safety Officer hosted an area at the North Yorkshire County Show at South Otterington and was supported by Police, Fire and Ambulance officers.

A number of public engagement events were held involving partners including the enthusiastic Northallerton branch of the Institute of Advanced Motorists (IAM). In particular we worked closely with the Fire Service during the Chief Fire Officers Association (CFOA) National Road Safety week in June where local events were held every day of the week.

The Road Safety Officer delivered a series of radio messages on the importance of appropriate speed, avoiding distractions and correct seatbelt use.

He worked with staff from Children and Young Peoples Services (CYPS) by attending a series of "Fun in the Park" family days which involved giving road safety messages to disadvantaged families to support parents in keeping their children safe.

Anti-drink/drive talks were given to offenders by the Probation service using information and resources provided by the Road Safety Officer.

## Speed Management

The Area 2 Highways Office, Thirsk processed 35 speed concern enquires. Of those enquiries 4 had already been investigated within the last 3 years and 4 were already awaiting the speed matrix to be deployed. The remaining 27 sites resulted in 9 requests for speed matrix sign deployment by the fire and rescue service and 7 requests for Police speed enforcement.

## Cluster sites

There are 154 cluster sites identified in North Yorkshire compared with a total of 161 the previous year. Of these 154 sites, 20 are located within Hambleton and details of these are contained on the next page. Of these, 7 are urban (40 mph or lower speed roads) and 13 are rural (over 40 mph limit roads). Of all North Yorkshire collisions 2013-2014, 16% occurred at cluster sites; 11% of all collisions in Hambleton in 2014 occurred at cluster sites.

The collision prevention schemes worked on this year to address cluster site collisions were –

- ◆ A172 West of Ingleby Cross – sign improvement scheme to be undertaken 2015/16
- ◆ B6265 at Flood Bridge bend, Exelby – hazard marker posts installed throughout bend in December 2014
- ◆ A167 Oaktree Hill/Brompton Lane junction, Brompton – sign, line and surface improvements to be undertaken 2015/16



## Road Safety Engineering Activities – Hambleton

### Collision cluster site locations

2013/14 NYCC Rank	Location	District	Site Type	Collision Sev. Factor	Cas Sev. Factor	Collisions			Total Collisions 2012-2014	Total Child Cas	Comments
						2012	2013	2014			
5	A170 Sutton Bank - Sutton-Under-Whitstonecliffe	Ham	rural	10	17	2	4	3	9	6	Annual maintenance works will be carried out in September 2015 with minor sign improvements. This site forms part of a police camera enforcement route.
28	A170 Sutton Rd / Moor Lane jct - Bagby	Ham	rural	7	10	1	2	1	4	1	Fatal collision investigation undertaken in October 2013, recommended small scale sign improvements. Only one slight collision in study period since implementation, continue to monitor. This site is due to be surface patched in 2016/17. This site forms part of a police camera enforcement route.
32	A19 Staddle Bridge nr Tontine	Ham	rural	7	9	2	1	2	5	0	Highways England engineering investigation to be undertaken. This site forms part of a police camera enforcement route.
37	A61 Market Pl/B1448 Kirkgate, Jct - Thirsk	Ham	urban	7	6	3	1	3	7	0	Traffic engineering investigation found no recommendations, no clear pattern to the collisions, continuing to monitor site. This site forms part of a police camera enforcement route.
52	B6285 at Flood Bridge, bend - Exelby	Ham	rural	6	8	2	2	0	4	0	Hazard marker post introduced throughout extents of bends, works carried out December 2014. No further action, continuing to monitor site.
53	A168/ B1448 Northallerton Rd, Jct - South Kilvington	Ham	rural	6	8	2	2	1	5	0	Traffic island installation and realignment of road markings undertaken in September 2013, two collisions since implementation. No further action, continuing to monitor site.
58	A684 by Askew Level Crossing, Bedale	Ham	urban	6	7	2	1	1	4	1	Joint scheme with Network Rail, implemented November 2013 included introducing rubber inserts on the rails. One collision since implementation, continuing to monitor site. This site forms part of a police camera enforcement route.
60	B1257, by Stokesley Leisure Centre - Stokesley	Ham	rural	6	7	2	2	1	5	0	Traffic engineering investigation found no recommendations, no clear pattern to collisions, continuing to monitor site. This site forms part of a police camera enforcement route.
65	High Street/Friarage St/A684 Brompton Rd, Rndbt - Northallerton	Ham	urban	6	6	2	2	2	6	1	Traffic engineering investigation found no recommendations, no clear pattern to the collisions, continuing to monitor site.