

Harrogate district (Area 6)

Harrogate district in brief

- ◆ In total, seven people (all adults), were **killed** in 2014 in the Harrogate District against twelve fatalities (all adults) recorded in 2013. Amongst the fatalities, were 4 car drivers, 2 powered two wheeler riders (PTW) and a pedal cyclist.
- ◆ The number of people **killed or seriously injured (KSI)** was 108 in 2014, reduced from 127 in 2013. In terms of road user groups, the number of KSI casualties has decreased in all the road user group categories pedestrians (-8), car occupants (-5), pedal cyclists (-1), PTW (-1), and other vehicle types (-4).
- ◆ The total number of **casualties** reported to the police in 2014 was 604, down 6% on the previous year (645). The biggest reduction was through the number of slightly injured car occupants reducing by 22.
- ◆ In 2014, **child KSI casualties** reduced by 1 (11%) from 9 in 2013 to 8 in 2014. The 8 KSI child casualties were 5 car passengers, 2 pedal cyclists, and 1 pedestrian
- ◆ In Harrogate district, a total of 72 **cyclists** (2 children) were injured against 66 (6 children) in 2013. This increase is different from to the number of cyclist KSI (19) which fell slightly from the previous year (20).
- ◆ In 2014, the number of **pedestrian** casualties decreased by 24% to 41. Pedestrian KSI also decreased to 12 this year from the 20 recorded in 2013. There was 1 child pedestrian KSI casualty reported in 2014 (down from 7 in 2013).
- ◆ The number of **powered two wheeler (PTW)** casualties has decreased by 7% to 54 in 2014 from 58 in 2013. An increase is seen amongst PTW KSI (16) which is 1 fewer than the 17 recorded the previous year.
- ◆ A total of 446 **road collisions** that resulted in someone being injured were reported to the police in 2014, 11 fewer than 2013. This total works out at an average of 38 collisions per month or 9 per week.

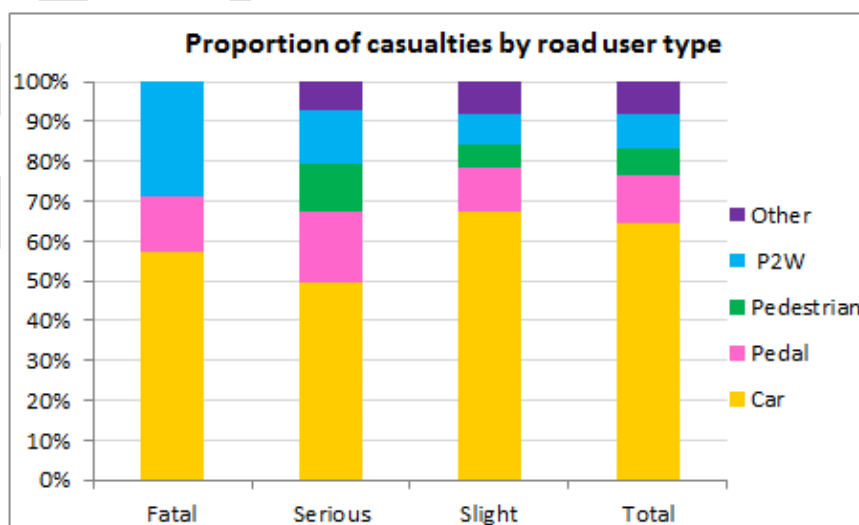


Figure 21 - Proportion of all casualties by road user type in 2014 - Harrogate
Source - Road Safety & Travel Awareness, North Yorkshire County Council

All Casualties - Harrogate

The overall downward trend in all road casualties, continued in 2014, with 41 fewer casualties recorded in the district compared to the previous year.

This is reflected in the number of people who were either killed or seriously injured in the district, though the small numbers make the % variance look greater.

The decrease in all casualties injured in the Harrogate district is slightly better than the countywide picture (-9% in Harrogate, -7% in North Yorkshire compared to baseline).

Facts about all casualties in 2014

- ◆ There were 604 casualties in 2014, 41 fewer than the previous year (-6%).
- ◆ Car occupants make up the largest proportion of road casualties (64%) followed by pedal cyclists (12%), PTW riders (9%), other vehicle types (8%) and pedestrians (7%).
- ◆ The number of casualties recorded in 2014, is 9% below the 2009-13 baseline average.
- ◆ The number of children injured (39) which represents 9% of all casualties in 2014, decreased by 22% over the previous year (50).
- ◆ The number of cyclist casualties increased in 2014, having also increased in 2013.
- ◆ Cyclist casualties (72) are up 48% from the 2009-13 baseline (49).
- ◆ There was an average of 38 road collisions per month or 9 per week in which someone was hurt.

Harrogate	Baseline (avg 09-13)	2011	2012	2013	2014	2014 vs baseline	Statistically significant change
Fatal	11	12	5	12	7	-34.0%	—
Serious	102	112	78	115	101	-1.2%	—
Slight	554	585	567	518	496	-10.5%	—
Total	667	709	650	645	604	-9.4%	—
KSI	113	124	83	127	108	-4.3%	—
Child KSI	7	4	7	9	8	11.1%	—
Young Person KSI	26	28	17	30	16	-37.5%	—
Older Person KSI	39	43	42	40	48	24.4%	—
Pedestrian KSI	13	12	9	20	12	-4.8%	—
Cyclist KSI	13	17	7	20	19	48.4%	—
PTW KSI	22	30	15	17	16	-26.6%	—
All Child Casualties	43	41	48	50	39	-8.9%	—
All Cyclist Casualties	49	49	46	66	72	48.1%	↓

Table 15 - Reported road traffic casualties and severity since 2011 - Harrogate
Source - Road Safety & Travel Awareness, North Yorkshire County Council

Killed or Seriously Injured (KSI) Casualties - Harrogate

In 2014, with a total of 108 KSI casualties, Harrogate has returned to its gradually downward trend.

The number of KSI recorded in 2014 (108) is 19 fewer than in 2013.

The number of children seriously injured decreased by 1 over the previous year (9).

The decrease in KSI in 2014 against 2013 is encouraging; but it is too soon to speculate on whether this is the start of a new downward trend or a return to the previous fluctuating pattern.

Facts about KSI casualties in 2014

- ◆ The number of people killed or seriously injured in Harrogate decreased by 19 (-15%) to 108 in 2014.
- ◆ This result is associated with fewer pedestrians (-8), car occupants (-5), other vehicle types (-4), PTW (-1) and pedal cyclists (-1) KSI injuries in the district.
- ◆ Pedal cyclists (19) and pedestrians (12) between them, account for 29% of all KSI casualties. Adding in PTW (16) would bring this amount to 44% of all killed or seriously injured casualties.
- ◆ Children KSI (8) represent 7% of all KSI in the district, unchanged from 2013.

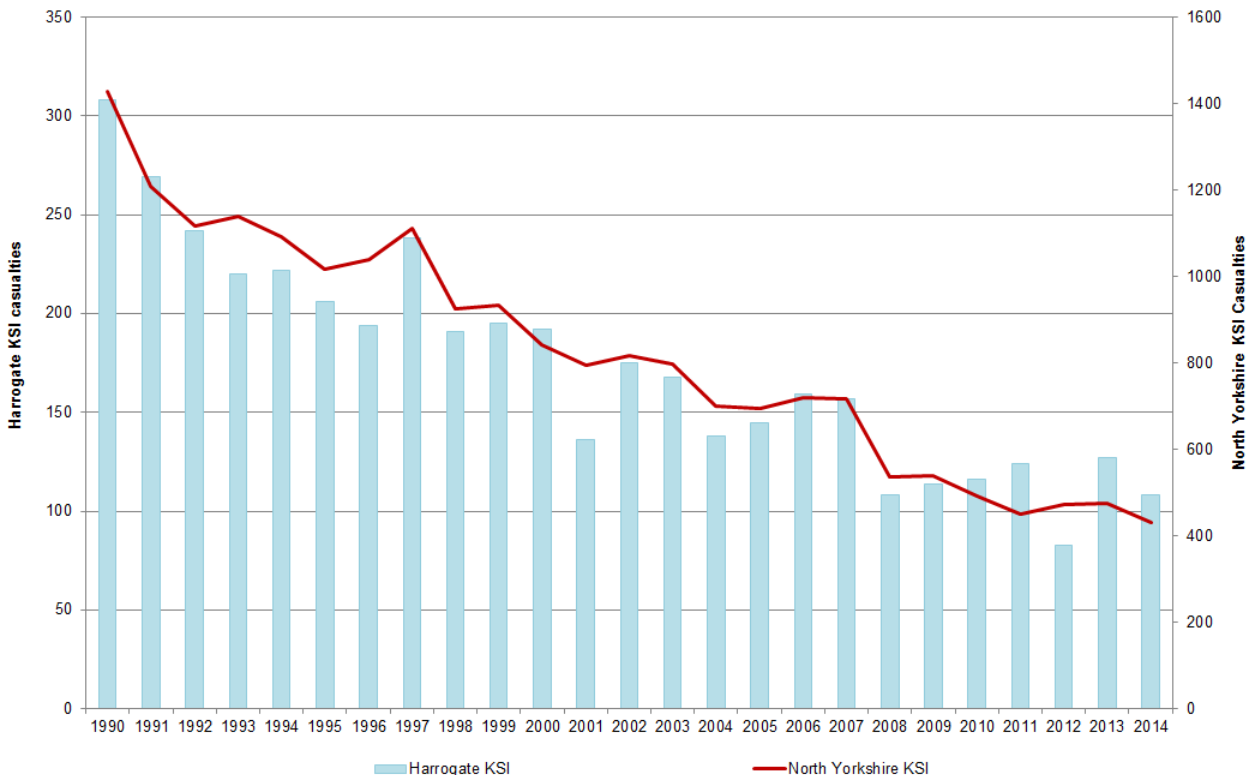


Figure 22 - Reported road traffic KSI casualty trends since 1990 - Harrogate
Source - Road Safety & Travel Awareness, North Yorkshire County Council

Child Casualties - Harrogate

Child casualties in the district have followed a decreasing trend since 1997; but saw a slight increase in 2012 and 2013. However, 2010 was the lowest year ever for child casualties (35) in the Harrogate district since records began and 2011 was the lowest year for child KSI casualties since records began (4).

With a total of 8 child KSI casualties, the district has reduced slightly on the number in 2013 and this year the proportion of child KSI casualties is unchanged within the total number of casualties.

This year's child KSI results have increased against the baseline, putting the district 11% above its 2009-13 average. However, it should be noted that the number of KSI casualties in the district is now so low as to make percentage changes look larger as numbers are smaller.

Facts about child casualties in 2014

- ◆ 17 of the children injured were secondary school aged, 16 were primary aged and 6 were pre-school age.
- ◆ Of the child cyclist casualties (5) one was not wearing a cycle helmet and in another case we do not know whether they were or not.
- ◆ The "fault" for a collision was recorded as divided 50% between the child cyclists and the drivers.
- ◆ The seven pedestrian child casualties were 4 pedestrian at fault, and 3 with the driver at fault.
- ◆ The majority of collisions involving children occurred on a weekday (22 out of 39) but of those the majority occurred during the day, some during school holidays.

Car passenger casualties constitute the largest proportion of all child casualties in general (24) and as child KSI casualties (5) in particular.

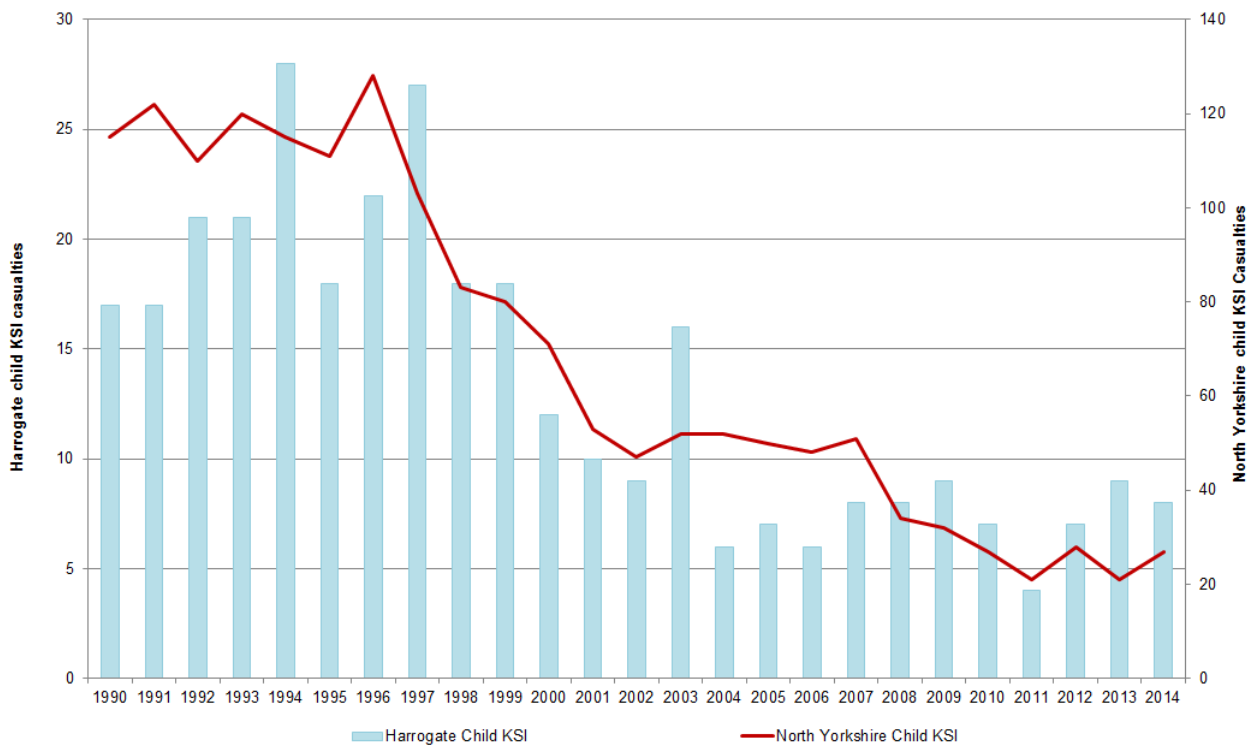


Figure 23 - Reported road traffic KSI child casualty trends since 1990 - Harrogate
Source - Road Safety & Travel Awareness, North Yorkshire County Council

Road Safety Education and Community Engagement - Harrogate

Children - Primary School

Last year 824 Year 5 and 6 primary school pupils at 31 schools completed the Bikeability cycle training programme learning their Highway Code and how to cycle on the roads.



Image 20 - Moorside Primary pupils discussing Bikeability with a StrayFM reporter

More than 2000 children from 92 schools attended the “Crucial Crew” multi-agency safety education event at Ripon Barracks. The children learned road safety advice and facts by taking part in active scenarios with follow up lesson information provided to their teachers

Children - Secondary School

The “Learn and Live” multi-agency presentation for sixth formers was held at 4 secondary schools and colleges: - Harrogate College, Harrogate Grammar, King James High school and Ripon High school.

We support secondary schools to deliver road safety lessons throughout the curriculum, with the benefit of our own specialist curriculum adviser.

A number of High Schools are now using cycling resources in Year 7 to support pupils cycling to school safely- which is good for their health and reduces school run congestion.

A winter driving presentation was made to 120 6th Form students at Ripon Grammar School.

Young People

Four new driver discussion groups were held in Ripon and Harrogate, attended by 15 new drivers on the Enhanced Pass Plus course.

Working with Driving Instructors

We have 8 driving instructors who have completed their training with us and are currently providing the EPP training for new drivers and Older Driver refresher drives for more experienced drivers who want to keep up to date and driving confidently and safely. We would welcome more instructors to join the register.

Motorcyclists

Engagement events have been held to meet with motorcyclists in Pateley Bridge town centre.

The newly updated “Bikers Guide to North Yorkshire” was revised in 2014 to include the A64, a new entry onto the high risk routes list. This route list also includes the A59 from Skipton to east of the A1.

Two additional online videos highlighting the hazards along these high risk routes have been



produced in 2015, highlighting the A171 and the A59. Along with advice on the www.roadwise.gov.uk website, the “NYRides” videos use social media such as YouTube and Facebook, to raise awareness of hazards and consequences of risky behaviour through the channels that many motorcyclists frequently use.

Image 21 - Motorcyclist with Police Instructor on Bikesafe Ride out, March 2015

Cyclists

Messages to cyclists focus on “keeping yourself safe”. Messages to the wider road user community raise awareness of their responsibilities towards vulnerable road users especially to look out for cyclists. The “Think Bike” theme also provides additional value supporting elements of the motorcycle safety campaign.



Image 22 - Engagement with cyclists at Harrogate Railway station

To disseminate the messages widely, large format outdoor posters, vehicle stickers and postcards have been used, in conjunction with website and social media posts. We also distribute materials to cycling groups and related safety organisations both locally and further afield to raise awareness of the increase in the number of cyclists involved in collisions on these nationally popular routes and to offer rural riding safety tips.

In order to raise awareness of the number of collisions involving cyclists and lorries at junctions, we have distributed “Cyclists Beware - Lorries Turning” vehicle stickers to major commercial and local hauliers. Two local hauliers are carrying these posters on their fleets.

Older People

In Harrogate 16 older drivers have so far benefitted from the scheme this year.

This year the Driver Training Officer delivered an Older Driver Assessment training course to a further 6 Harrogate based driving instructors to enable them to deliver these refresher drives.

Occupational Road Risk

During 2014/15 The Driver Training Officer facilitated two safer driving for work seminars for NYCC staff in Harrogate and Boroughbridge and delivered 4 mini bus training sessions for Bewerley Park Outdoor Centre and Nidderdale High School staff in Pateley Bridge.

He also attended a number of meetings with local driving instructors to discuss improvements in delivery standards and delivered one Client Centred Learning course for instructors, which they themselves funded. This coaching skills programme aims to enhance teaching skills for the Instructor and improve the learning experience for the Pupil.

In June we took part in the Harrogate Business Forum “Safer Vehicle- Safer Driver” conference at the Pavilions.

Community Engagement/ Local Partnership Working

The Road Safety Team contributed to a number of events and initiatives in partnership with the Armed Forces, including Army Health Fairs at the Army Foundation College, Pennypot, and the Army Air Corps at Dishforth to discuss and advise on road safety risks and concerns and safe and sustainable travel for service personnel and their families and civilian staff.



During the run up to the Christmas holidays, “Don’t Drink and Drive” events were held in Harrogate and Ripon. This year the engagement events have include a focus on alcohol awareness, in particular it is common for people to underestimate the number a units consumed and the time taken for them to leave the body.

Image 23 - Winter Don’t Drink and Drive Campaign,

December 2014

In April we worked with the police enforcement operation targeting uninsured drivers and unsafe

loads in Harrogate.

In June, the team supported the Chief Fire Officers Association (CFOA) national Road Safety Week with events at Harrogate College using the driving simulator and seat belt sled to demonstrate potential hazards and the risks associated with new young drivers.

In June we also supported the Police drug and drink drive enforcement campaign with a series of road shows around the district providing information and advice about the new laws on drugs and driving – including prescription medicines.

In July we attended the Great Yorkshire show with Welcome to Yorkshire, promoting safer cycling on our many popular routes and we carried out a number of safer cyclist events in Harrogate.

In August we supported the National Police Chiefs Council (NPCC formerly ACPO) motorcycling action month.

Speed Management

The Area 6 Highways Office, Boroughbridge investigated 61 speed concern enquires. This resulted in 1 request for speed matrix sign deployment and 1 request for Police speed enforcement.

Cluster sites

There are 154 cluster sites identified in North Yorkshire compared with a total of 161 the previous year. Of these 154 sites, 55 are located within Harrogate and details of these are contained on the next page. The majority (31) are urban (40 mph or lower speed roads) and 24 are rural (over 40 mph limit roads). Of all collisions in North Yorkshire in 2013-2014, 16% occurred at cluster sites; 20% of all collisions in Harrogate in 2014 occurred at cluster sites.

The collision prevention schemes worked on this year to address cluster site collisions were –

- ◆ A61 Harrogate Rd/A658 Buttersyke Bar Roundabout, Harrogate – sign improvement scheme to be implemented 2015/16
- ◆ A61 Leeds Rd/Leadhall Lane/Hookstone Rd, Harrogate – lining improvement scheme to be implemented 2015/16
- ◆ A61 Ripon Rd/B6165 Roundabout, Ripley – sign improvement scheme to be implemented 2015/16

Road Safety Engineering Activities – Harrogate

Collision cluster site locations

2013/14 NYCC Rank	Location	District	Site Type	Collision Sev. Factor	Cas Sev. Factor	Collisions			Total Collisions 2012-2014	Total Child Cas	Comments
						2012	2013	2014			
3	A61 Harrogate Rd/A658, Buttersyke Bar Rndbt - Harrogate	Hgt	rural	11	12	2	2	5	9	0	Collision reduction investigation undertaken, signing improvement scheme to be implemented 2015/16. This site forms part of a police camera enforcement route.
7	A61 Leeds Rd/Leadhall Ln/Hookstone Rd, Jnct - Harrogate	Hgt	urban	10	5	2	3	4	9	0	Developer led improvements to the junction undertaken in Summer 2014, task group established to deal with user concerns. Outcome of task group has put forward a package of measures including improvements to the timings of the signals to increase capacity, changes to the road markings, signs and introduction of pedestrian facilities to be implemented 2015/16. This site forms part of a police camera enforcement route.
13	A59 Kex Gill Rd by Keg Gill Farm - Blubberhouses	Hgt	rural	8	16	0	2	3	5	1	Traffic engineering investigation found no recommendations, no clear collision pattern, location has clear forward visibility of warning signs on approach with road markings and signs in good condition, continuing to monitor site. This site forms part of a police camera enforcement route.
14	A61 Harrogate Rd / North of Bishop Monkton, Xrds - Ripon	Hgt	rural	8	15	2	1	2	5	3	Traffic engineering investigation on going. This site forms part of a police camera enforcement route.
15	A59 Skipton Rd/B6451 Brame Ln, Jnct - Kettleasing	Hgt	rural	8	14	3	3	2	8	0	Traffic engineering investigation on going, looking at surface conditions therefore any recommendations to be implemented 2016/17. This site forms part of a police camera enforcement route.
20	A59 Skipton Rd/Woodfield Rd/King's Rd, Jnct - Harrogate	Hgt	urban	8	7	1	1	4	6	0	Traffic engineering investigation found no recommendations, no clear pattern to the collisions, continuing to monitor site. This site forms part of a police camera enforcement route.
21	A59 Skipton Rd/Dragon Parade, Jnct - Harrogate	Hgt	urban	8	6	3	1	3	7	0	Traffic engineering investigation found no recommendations, clear visibility at junction, collisions occurring during times of congestion attributed to driver issues with poor judgement, continuing to monitor site. This site forms part of a police camera enforcement route.
22	B6162 Pot Bank/B6161 Otley Rd, Jnct - Beckwithshaw	Hgt	urban	8	5	1	4	0	5	2	Resurfacing, signing, road marking and street lighting scheme implemented in February 2014. No collisions since scheme implementation, continuing to monitor site.

2013/14	Location	District	Site	Collision	Cas	Collisions	Total	Total	Comments
---------	----------	----------	------	-----------	-----	------------	-------	-------	----------

Reported Road Casualties in North Yorkshire: Annual Report 2014

NYCC Rank			Type	Sev. Factor	Sev. Factor				Collisions 2012-2014	Child Cas	
						2012	2013	2014			
23	A59/A168 Jnct - Allerton Grange	Hgt	rural	7	14	1	3	1	5	1	Developer funded low cost measures including lining and high friction surfacing installed Spring 2015. Additionally Highways England will be installing traffic signals at the junction as part of the A1 Junction 47 junction.
26	A61 Harrogate Rd/Burn Bridge Ln, Jnct - Harrogate	Hgt	rural	7	11	1	4	1	6	1	Traffic engineering investigation on going, looking at installing temporary signs. This site forms part of a police camera enforcement route.
30	A661 Wetherby Rd by Ucl to Rudfarlington - Harrogate	Hgt	rural	7	10	3	1	2	6	0	Sign improvement scheme undertaken in 2013, two personal injury collisions since implementation, no further action taken, continuing to monitor site.
31	A6055 Harrogate Rd/West Field Ln/Arkendale Rd, Jnct - Arkendale	Hgt	rural	7	9	3	2	1	6	0	This section of road was resurfaced, relined and restudded in 2014.
33	A61 Leeds Rd 150m South Of Almsford Bridge , Bend - Harrogate	Hgt	rural	7	8	2	2	0	4	0	This length was relined in 2014 following Fatal Collision investigation. This site forms part of a police camera enforcement route.
35	A61 Ripon By-Pass/ B6265 Boroughbridge Rd, Rndt - Ripon	Hgt	rural	7	7	2	3	1	6	1	Traffic engineering investigation on going, looking at a possible sign improvement and line marking scheme. These works will be carried out alongside a bridge maintenance scheme programmed for January/February 2016. This site forms part of a police camera enforcement route.
38	A6040 Knaresborough Rd/North Park Road, Jnct - Harrogate	Hgt	urban	7	6	1	4	2	7	0	Traffic engineering investigation found no recommendations, continuing to monitor site.
39	A59 Skipton Rd/Rowden Ln/ Burley Bank Rd, Jnct - Harrogate	Hgt	rural	6	15	1	2	2	5	1	Traffic engineering investigation found no recommendations, no clear pattern to collisions, continuing to monitor site. This site forms part of a police camera enforcement route.
45	A61 Station Parade / Station Bridge, Xrds - Harrogate	Hgt	urban	6	9	2	3	1	6	2	Signal and pedestrian improvement scheme undertaken in Feb/March 2015 in the vicinity of this site. No further action, continuing to monitor site. This site forms part of a police camera enforcement route.
47	A59 Knaresborough Rd/Granby Rd - Harrogate	Hgt	urban	6	9	4	1	0	5	0	Traffic engineering investigation found no recommendations, no clear pattern to the collisions, continuing to monitor site. This site forms part of a police camera enforcement route.
48	A6055 Harrogate Rd at Spellow Cottages, straight - Arkendale	Hgt	rural	6	9	0	4	0	4	0	Traffic engineering investigation on going.
49	A661 Wetherby Rd/Railway Rd, Jnct - Harrogate	Hgt	urban	6	8	2	2	2	6	1	Investigation by traffic signals section on going.

2013/14 NYCC Rank	Location	District	Site Type	Collision Sev. Factor	Cas Sev. Factor	Collisions	Total Collisions 2012-2014	Total Child Cas	Comments
-------------------	----------	----------	-----------	-----------------------	-----------------	------------	----------------------------	-----------------	----------

Reported Road Casualties in North Yorkshire: Annual Report 2014

						2012	2013	2014			
50	A59 Interchange/a1 Jnct 47, Western Entrance To Rndbt - Allerton Grange	Hgt	rural	6	8	2	1	3	6	1	Roundabout constructed spring/summer 2014 west of this site, no collisions since implementation, continuing to monitor site. Highways England installing signals and lighting in autumn 2015. This site forms part of a police camera enforcement route.
59	A168 / Rd to Rainton, Rndbt - Rainton	Hgt	rural	6	7	3	1	1	5	0	Highways England engineering investigation to be undertaken.
61	A61 Ripon Rd / B6165 roundabout - Ripley	Hgt	rural	6	7	2	0	3	5	0	Sign improvement scheme has been designed to be implemented 2015/16. This site forms part of a police camera enforcement route.
63	A658/B6161 Leathley Ln/Castley Ln, Jnct - Leathley	Hgt	rural	6	7	1	1	2	4	0	Traffic engineering investigation on going.
64	A61 Leeds Rd By Brookside Nursery - Pannal	Hgt	rural	6	7	1	2	1	4	0	Traffic engineering investigation on going.
67	A59 Knaresborough Rd/St Andrew's Cres/Lancaster Park Rd, Jnct - Harrogate	Hgt	urban	6	6	1	4	1	6	1	Traffic engineering investigation found no recommendations, no clear pattern to the collisions, continuing to monitor site. This road was resurfaced and re-lined in 2013. This site forms part of a police camera enforcement route.
71	A6040 York Pl/Station Prd/South Park Rd, Jnct - Harrogate	Hgt	urban	6	6	1	2	2	5	0	Traffic engineering investigation on going.
72	A59 Knaresborough Rd/Prospect Rd, Area - Harrogate	Hgt	urban	6	6	0	3	3	6	0	Traffic engineering investigation found no recommendations, no clear pattern to the collisions, continuing to monitor site. This road was resurfaced and re-lined in 2013. This site forms part of a police camera enforcement route.
75	A59 Skipton Rd/Grove Rd, Jnct - Harrogate	Hgt	urban	6	5	1	2	2	5	0	Signing improvements and introduction of tactile paving across Grove Road implemented early 2014. This site forms part of a police camera enforcement route.
79	A658 / B6163 Thistle Hill, Jnct - Harrogate	Hgt	rural	5	11	1	2	1	4	0	Majority of collisions driver contributory, no suitable cost effective remedial measures possible at this location. Continue to monitor.
80	A658 Harrogate Rd/Dunkeswick Ln/Hall Green Ln, Jnct - North Rigton	Hgt	rural	5	10	2	1	1	4	0	Street lighting implemented in March 2015, continuing to monitor site.
83	A59 Skipton Rd/A661 Wetherby Rd/Knaresborough Rd, Rndbt - Harrogate	Hgt	urban	5	9	1	1	3	5	1	Traffic engineering investigation found no recommendations, good visibility at roundabout. No further action, continuing to monitor site. This site forms part of a police camera enforcement route.
85	A59/Station Rd, Jnct - Whixley	Hgt	rural	5	9	2	1	1	4	0	Traffic engineering investigation found no recommendations, area has recently been resurfaced, continue to monitor. This site forms part of a police camera enforcement route.

Reported Road Casualties in North Yorkshire: Annual Report 2014

2013/14 NYCC Rank	Location	District	Site Type	Collision Sev. Factor	Cas Sev. Factor	Collisions			Total Collisions 2012-2014	Total Child Cas	Comments
						2012	2013	2014			
86	A59 Knaresborough Rd / Jesmond Rd / St Andrews Crescent - Harrogate	Hgt	urban	5	9	1	1	3	5	0	Traffic engineering investigation found no recommendations, continuing to monitor site. This site forms part of a police camera enforcement route.
88	A168 South Slip/A1, Jnct - Dishforth	Hgt	rural	5	8	4	1	0	5	0	Highways England engineering investigation to be undertaken.
89	A661 Wetherby Rd/Rudding Ln/Forest Ln, Jnct - Harrogate	Hgt	urban	5	8	3	1	1	5	0	Traffic engineering investigation on going, looking at possible sign improvements at this location.
92	A59 Knaresborough Rd/Roseville Rd, Jnct - Harrogate	Hgt	urban	5	7	2	1	1	4	1	Traffic engineering investigation found no recommendations, no clear pattern to the collisions, continuing to monitor site. This road was resurfaces in 2012. This site forms part of a police camera enforcement route.
95	A61 Ripon Rd/Jenny Field Dr/Coppice Ave, Jnct - Harrogate	Hgt	urban	5	7	1	3	0	4	0	Traffic engineering investigation found no recommendations, no clear pattern to the collisions, continuing to monitor site. This site forms part of a police camera enforcement route.
98	A661 Wetherby Rd/St Winifred's Av/Willaston Cres, Jnct - Harrogate	Hgt	urban	5	6	3	2	0	5	1	Traffic engineering investigation found no recommendations, continue to monitor. This site forms part of a police camera enforcement route.
102	Coldbath Rd/Montpellier Hill/royal Parade, Rndbt - Harrogate	Hgt	urban	5	6	1	2	1	4	1	Traffic engineering investigation on going.
107	A61 Leeds Rd/B6162 Otley Rd/A6040 York Pl, Rndbt - Harrogate	Hgt	urban	5	6	1	2	1	4	0	Traffic engineering investigation found no recommendations, no clear pattern to the collisions, continuing to monitor site. This site forms part of a police camera enforcement route.
109	C224 Hookstone Chase/Plompton Dr, area - Harrogate	Hgt	urban	5	6	1	1	2	4	0	Traffic engineering investigation on going.
115	A658 Harrogate Rd at Nab Hill, bend - North Rigton	Hgt	rural	5	5	1	1	2	4	0	Signing scheme implemented in 2013/14, two personal injury collisions since implementation. No further action, continuing to monitor site.
118	A61 Station Prd by Bus Station - Harrogate	Hgt	urban	5	5	0	3	2	5	0	Signal and pedestrian improvement scheme undertaken in Feb/March 2015 in the vicinity of this site, high friction surfacing and lining to be renewed following installation of the lighting. No further action, continuing to monitor site.
120	A59 Skipton Rd/Bilton Ln, Jnct - Harrogate	Hgt	urban	5	4	1	0	3	4	1	Traffic engineering investigation on going, junction signal improvement scheme identified for 2016. This site forms part of a police camera enforcement route.
127	B6162 Otley Rd/West End Avenue, Area - Harrogate	Hgt	urban	4	7	3	1	0	4	0	Traffic engineering investigation found no recommendations, no clear pattern to the collisions, continuing to monitor site.
131	A59 High St/Belmont Avenue, area - Starbeck	Hgt	urban	4	7	0	3	1	4	0	Traffic engineering investigation found no recommendations, no clear pattern to the collisions, continuing to monitor site. This site forms part of a police camera enforcement route.

Reported Road Casualties in North Yorkshire: Annual Report 2014

2013/14 NYCC Rank	Location	District	Site Type	Collision Sev. Factor	Cas Sev. Factor	Collisions			Total Collisions 2012-2014	Total Child Cas	Comments
						2012	2013	2014			
133	A661 Wetherby Rd/Hookstone Chase, Jnct - Harrogate	Hgt	urban	4	6	3	1	0	4	0	Major development of the junction was undertaken in summer 2014, including lane changes and sign improvements. No further action, continuing to monitor site.
138	B6265 by Ripon Racecourse, Jnct - Ripon	Hgt	rural	4	6	0	0	4	4	0	Traffic engineering investigation on going. This site forms part of a police camera enforcement route.
141	Royal Parade/valley Drive, Jnct - Harrogate	Hgt	urban	4	5	1	1	2	4	1	Traffic engineering investigation on going.
142	A59 Skipton Rd / Church Hill jnct - Blubberhouses	Hgt	rural	4	5	2	1	1	4	0	Road markings refreshed summer 2014. Traffic engineering investigation found no recommendations, continuing to monitor site. This site forms part of a police camera enforcement route.
144	A61 Leeds Rd / Langcliffe Ave / Park Drive rndbt - Harrogate	Hgt	urban	4	5	2	1	1	4	0	Traffic engineering investigation found no recommendations, no clear pattern to the collisions, continuing to monitor site. This site forms part of a police camera enforcement route.
149	A59 High St / A6055 Boroughbridge Rd, Jnct - Knaresborough	Hgt	urban	4	5	0	4	0	4	0	Traffic engineering investigation on going. This site forms part of a police camera enforcement route.
150	A61 Cheltenham Crescent area - Harrogate	Hgt	urban	4	4	1	0	3	4	1	Traffic engineering investigation found no recommendations, no clear pattern to the collisions, continuing to monitor site.
154	A61 Harrogate Rd/ Station Ln, Bend - Wormald Green	Hgt	urban	4	0	3	0	1	4	0	Signing improvement scheme implemented late 2012/13 no further action continuing to monitor site.