

Selby district (Area 7)

Selby district in brief

- ◆ Six people, all of whom were adults, were **killed** on Selby's roads during 2014 the same number as in 2013. There were 2 car drivers and 1 car passenger, 1 pedestrian, 1 pedal cyclist and 1 powered two wheeler (PTW) riders.
- ◆ The number of people **killed or seriously injured (KSI)** was 50 in 2013 and has increased to 53 in 2014. In terms of road user groups, the number of KSI has decreased amongst car occupants (-7) and increased in all other categories, pedestrians (+3) PTW riders (+4), other groups (+1), pedal cyclists (+2).
- ◆ The number of **total casualties** in road collisions reported to the police in 2014 was 264, down 2% on 2013 (270). This decrease is mostly due to the car road user group which saw an 8% decrease in casualties in 2014, the pedal cyclists group also saw an overall decrease from 31 to 29 and the PTW group reduced from 46 to 41. The pedestrians and the other vehicle types groups saw increases from 16 and 24 and from 0 to 1 respectively.
- ◆ The reported number of **child KSI casualties** (ages 0-15) in the district in 2014 (7) is above the previous year (3). This year five of the injured children were pedestrian's, one a pedal cyclists and one the passenger on a PTW.
- ◆ The number of **cyclist** casualties has decreased by 6% from 29 in 2013 to 31 in 2014. Child cyclist casualties (1) have increased by 1 from the previous year (0).
- ◆ **Pedestrian** casualties increased by 50% to 24 in 2014 from 16 in 2013. The increase is more pronounced amongst pedestrian KSI (7) which is 3 more than the total (4) recorded the previous year.
- ◆ The number of **powered two wheeler (PTW)** casualties has decreased by 11% to 41 in 2014 from 46 in 2013. The PTW KSI (20) is 25% more than the total (16) recorded the previous year
- ◆ A total of 170 **road collisions** that resulted in someone being injured were reported to the police in 2014, 13% fewer than in 2013 (195). This total works out at an average of 16 collisions per month or 4 per week.

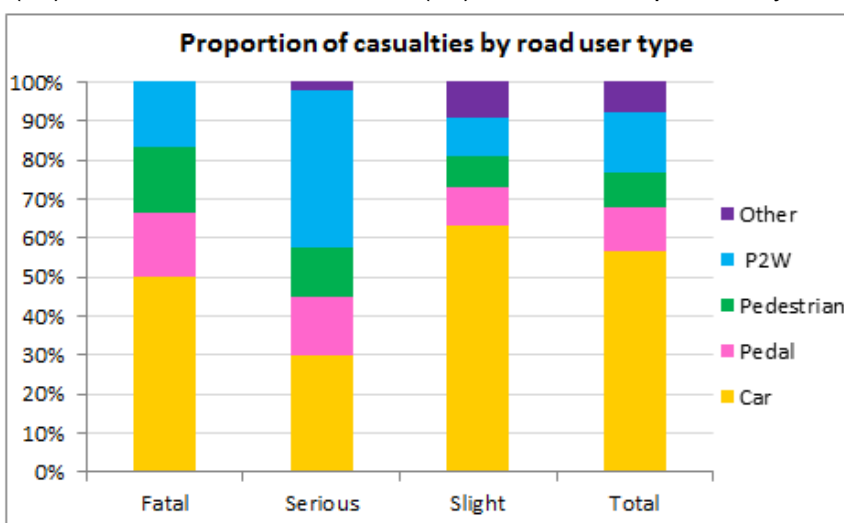


Figure 24 - Proportion of all casualties by road user type in 2014 - Selby
Source - Road Safety & Travel Awareness, North Yorkshire County Council

All Casualties - Selby

The trend in road casualties reported to the Police in Selby saw a reduction in 2014 after a slight upturn in 2013 and is still below the overall downward trend line.

In 2014, the district has recorded 6 fewer casualties compared to the previous year. The decrease is mainly explained by the reduction in the number of car occupant casualties (down by 8%). A decrease was also seen in the PTW category from 46 to 41. The number of pedal cyclists, pedestrians and other vehicle types each increased in 2014.

The decrease in all casualties injured in the Selby district is slightly better than the countywide picture (-12% in Harrogate, -7% in North Yorkshire compared to baseline).

Facts about all casualties in 2014

- ◆ There were 264 casualties in 2014, 6 less than in 2013 (a 2% decrease).
- ◆ Car occupants make up the largest proportion of road casualties (57%); followed by PTW (16%), pedal cyclists (11%), pedestrians (9%) and others (8%).
- ◆ The number of casualties recorded in 2014, is 12% below the 2009-13 average.
- ◆ The number of children injured (30) which represent 11% of all casualties in 2014; was 8 above 2013 (22).
- ◆ Cyclist casualties reduced in 2014 but the 2014 total (29) is now 46% above the 2009-13 average (20).

Selby	Baseline (avg 09-13)	2011	2012	2013	2014	2014 vs baseline	Statistically significant
Fatal	6	8	4	6	6	-3.2%	—
Serious	48	42	51	44	47	-2.5%	—
Slight	247	227	231	220	211	-14.6%	—
Total	302	277	286	270	264	-12.5%	—
KSI	54	50	55	50	53	-2.6%	—
Child KSI	4	6	5	3	7	84.2%	—
Young Person KSI	13	9	12	14	14	11.1%	—
Older Person KSI	15	14	16	19	14	-7.9%	—
Pedestrian KSI	4	3	5	4	7	84.2%	—
Cyclist KSI	3	3	2	6	8	135.3%	—
PTW KSI	18	20	17	16	20	9.9%	—
All Child Casualties	25	19	27	22	30	22.0%	—
All Cyclist Casualties	20	17	19	31	29	46.5%	—

Table 16 - Reported road traffic casualties and severity since 2011 - Selby
Source - Road Safety & Travel Awareness, North Yorkshire County Council

Killed or Seriously Injured (KSI) Casualties - Selby

In 2014, with a total 53 KSI casualties, numbers have risen but are still 3% below the 2009-13 baseline average (54).

The year saw a decrease in the number of car occupant KSI casualties which has fallen by 7 from the previous year, but pedal cyclist KSIs were up by 2, pedestrians up by 3, PTW increased by 4 and other vehicle types increased by 1.

The number of KSI (7) amongst children (0-15 years old) has risen in 2014 compared to the previous year (3).

The increase in KSI in 2013 against 2014 is disappointing; however, as shown in the graph below, KSI figures have not changed a great deal (up or down) over the last five years.

Facts about KSI casualties in 2014

- ◆ The number of people killed or seriously injured rose by 6% to 50 in 2014.
- ◆ The three most vulnerable road user groups (pedestrian, cyclist and PTW riders), between them, account for 36% of all KSI casualties.
- ◆ The increase in KSI casualties in 2014 is associated with small increases in each casualty group, except for car occupant casualties which has decreased (-7).
- ◆ The district performed slightly worse for the pedal cyclist (+2), pedestrian (+3), PTW (+4) and other (+1) road user groups.
- ◆ Cyclist KSI casualties fluctuate from year to year but appear to hold an overall downward trend in Selby – which differs from most other districts. This will be closely monitored following the Tour de Yorkshire running through the district in 2015.

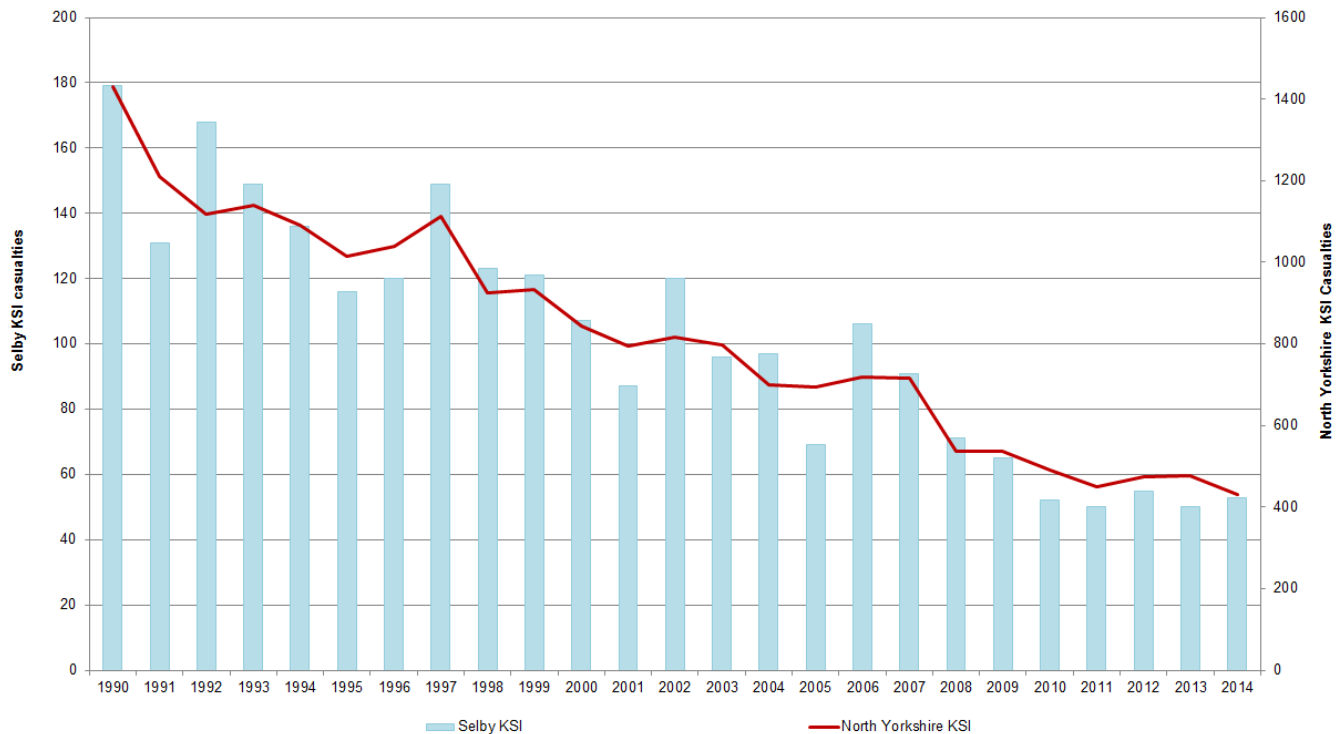


Figure 25 - Reported road traffic KSI casualty trends since 1990 - Selby
Source - Road Safety & Travel Awareness, North Yorkshire County Council

Child Casualties - Selby

The number of children injured in the district in 2014 (30) increased compared to the previous year (22), however the overall trend continues to be downwards despite variations from year to year.

The number of KSI (7) amongst children (0-15 years old) has increased in 2014 compared to the previous year (3).

This year's overall child casualty numbers show an increase of 22% against the 2009-13 baseline average, and a 27% decrease since the previous year.

The rise in child casualties is mainly associated with the increase in all children pedestrian casualties from 5 to 13, though child PTW casualties also increased from 0 to 2.

Facts about Child casualties in 2014

- ◆ 15 of the children injured were secondary school aged, 11 were primary aged and 4 were pre-school age.
- ◆ In the car collisions, all eleven of the children injured were in the car with an adult (many of these are thought to have been either parent or grandparent).
- ◆ In the car collisions involving children the three most reported causation factors were *sudden braking; vehicle driver failed to look properly and pedestrian failed to look properly.*
- ◆ In the child cyclist collisions one was not wearing a cycle helmet and the other was unknown for cycle helmet. Both involved the child cycling on the pavement then entering road traffic suddenly.
- ◆ The thirteen pedestrian child casualties were recorded as 2 *driver at fault* 9 *pedestrian at fault.*
- ◆ The majority of collisions involving children occurred on a weekday (17 of 23) but of those the majority occurred on an evening after 5pm, with Friday and Monday evenings having the most.

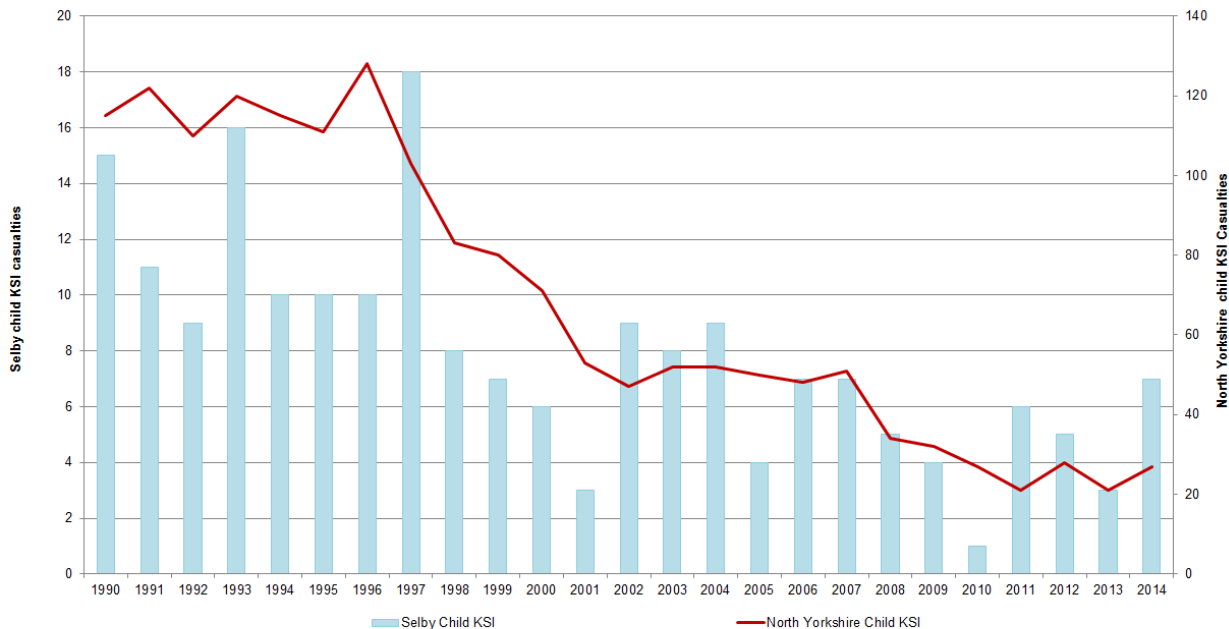


Figure 26 - Reported road traffic KSI child casualty trends since 1990 - Selby
Source - Road Safety & Travel Awareness, North Yorkshire County Council

Road Safety Education and Community Engagement - Selby

Children - Primary School

This year over 20 schools joined the Junior Road Safety scheme. The Junior Road Safety Officers (JRSOs) organise competitions, produce a display Road Safety notice board and lead assemblies in school through the year. In the July, each school submits their diary as a record of their activities and the entries are judged according to the activities the school has undertaken and presentation.

This year the standard was very high showing the pupils had organised a variety of exciting activities throughout the year. Hambleton Primary school chose Road Safety as a theme when teachers from a school in Zambia visited them.

This scheme is funded by Public Health North Yorkshire and strongly supported in the Selby area by Drax Power who hosted the annual JRSO prize giving and open days in November. Two Year 5 pupils and one adult from each school attend the day.



Image 24 – Junior Road Safety Officers day at Drax Power



Image 25 – Junior Road Safety Officers notice board

The team has also been involved with schools using our School Gate Parking resource pack to address problems outside schools

The Selby Area Road Safety Officer attended the Barlby High School STEM fair to deliver a Safer Cycling Workshop with around 75 pupils over the day.

Burton Salmon School were the winners of a Scooter pod to store scooters at school. One of the pupils submitted the best design for a Safe Scooting Leaflet from schools across North Yorkshire.

Children - Secondary School

This year the team are trialling a new transition resource to be used for Year 6 pupils moving to secondary school. This pack has been developed by the NYCC Team working with the City of York. It is designed to provide a guide to teachers that will enable them to incorporate appropriate road safety lessons and outcomes to pupils in Year 6. Transition from primary to secondary school is one of the biggest steps a pupil will take in their school life and how they choose to travel to their new school needs careful consideration and planning and an opportunity to develop positive and safe travel habits. It includes activities and questionnaires to help them consider their journey to their new school. Some schools also received copies of 'Move on Up' magazines to hand out to pupils. Selby High School, Brayton High School and Barlby High School all received the resources. We will work with these schools to evaluate the effectiveness of this approach to see whether it should continue, expand or cease.

Young People

There have been 3 New Driver Discussion groups held with young drivers taking the Enhanced Pass Plus (EPP) course. The sessions were held at Selby Fire Station.

A Young driver engagement event was held at Selby McDonalds (a popular gathering place for local young drivers) attended by The Road Safety team and local Fire and Rescue officers as part of a number of events for CFOA Road Safety Week in June. Fire fighters are strong, positive role models for young people and can be very effective in engaging their attention and respect.

Working with Driving Instructors

We have 7 specially trained driving instructors in the Selby area who are registered with us to provide the EPP young drivers programme and Older drivers refresher drives. More would be very welcome!

Motorcyclists

We have met with motorcyclists at Squire's Café at Sherburn in Elmet on a number of occasions to discuss safety and potential hazards on popular routes. The support and cooperation of the Café management is much appreciated. We also publish online videos highlighting the hazards along two of the high risk routes (the B1222 and B1257). Along with advice on the www.roadwise.gov.uk website, the "NYrides" videos use social media such as YouTube and Facebook, to raise awareness of hazards and consequences of risky behaviour. We also work with the motorcycling media to encourage safe and socially responsible biking on our roads.

Cyclists

Some 558 Year 5 and 6 primary school pupils in 40 schools took part in the Bikeability cycle training programme over the last year. We have a dedicated team of part time instructors working in the area led by an enthusiastic Road Safety Assistant.

On 2nd May 2015 the Road Safety and Travel Awareness Team together with Fire and Rescue colleagues ran a stand at the Selby Cycling Festival for the start of the Tour de Yorkshire. We

used this opportunity to provide guides to cycling the route safely and how to deal with trickier aspects of roads in the area and to encourage adults and children to get back on their bikes.

A curriculum-based resource was distributed to every school and the team distributed a Tour de Yorkshire activity booklet to all the schools in the centre of Selby and other locations near to the route.



Image 26 and 27 – Tour De Yorkshire Event, Selby



Older People

Several Older driver sessions have taken place at, Selby Parkinson's and Selby Alzheimer's support groups and at an Older person's engagement day at Selby Library. A number of people signed up for Older Drivers refresher drives.

Occupational Road Risk

As well as the seatbelt surveys which were focused around an industrial estate in the area, a number of days of driver awareness and safety management training have been supplied to Highways at Selby and to Arriva buses.

Community Engagement/ Local Partnership Working

Winter driving and winter and summer drink drive campaigns were held across Selby and Tadcaster.

Several Seatbelt surveys have been completed in various locations across the Selby area including:

Location	Findings	Summary results
A19 Brayton	435 vehicles observed 23 people not wearing seatbelts (5%)	Unrestrained in car 2% Unrestrained in van 60% No children were unrestrained
A1041 Selby	Overall 550 vehicles observed 40 people not wearing seatbelts (7.3%)	No children were unrestrained
Tadaster High Street	Overall 419 vehicles observed 7 people not wearing seatbelts (2%)	
New Lane, Sherburn	Overall 174 vehicle observed 8 people not wearing seatbelts (5%)	5 van drivers 2 high school front seat passengers

Table 17 - Community engagement - Seatbelt survey findings

Source - Road Safety & Travel Awareness, North Yorkshire County Council

Speed Management

There has been regular deployment of the data loggers and matrix signs where a need is identified. In 2014, the Selby area processed 14 speed concern enquires.

Cluster sites

There are 154 cluster sites identified in North Yorkshire compared with a total of 161 the previous year. Of these 154 sites, 22 are located within Selby and details of these are contained on the next page. Of these, 7 are urban (40 mph or lower speed roads) and 15 are rural (over 40 mph limit roads). Of all North Yorkshire collisions 2013-2014, 16% occurred at cluster sites; 13% of all collisions in Selby in 2014 occurred at cluster sites. A weighting index is applied based on the severity of collision i.e. slight, serious or fatal using weightings of 1, 2 and 3 respectively, it is then sorted by the collision severity factor, then by the casualty severity factor and lastly by total child casualty numbers in order to give every site a unique risk based ranking. The collision prevention schemes worked on this year to address cluster site collisions were –

- ◆ B1222 by New Bridge, Newthorpe – visibility survey carried out, changes to lining to be undertaken following surface dressing in summer 2015
- ◆ A1041 Carlton new bridge, Carlton – surface improvements carried out in January 2015, signing scheme to be implemented 2015/16
- ◆ A163/Cornelius Causeway/Lowmoor Rd, North Duffield – sign improvement scheme to be implemented 2015/16

Reported Road Casualties in North Yorkshire: Annual Report 2014

Road Safety Engineering Activities – Selby

Collision cluster site locations

2013/14 NYCC Rank	Location	District	Site Type	Collision Sev. Factor	Cas Sev. Factor	Collisions			Total Collisions 2012-2014	Total Child Cas	Comments
						2012	2013	2014			
1	A64 by Little Chef - Bilbrough	Sel	rural	12	24	3	2	2	7	3	Highways England advise that potential lighting and vehicle restraint system scheme under investigation. This site forms part of a police camera enforcement route.
2	A64/A162 Flyover WBC off slip, Tadcaster	Sel	rural	12	24	3	2	2	7	0	A joint Highways England and NYCC Traffic engineering investigation on going. This site forms part of a police camera enforcement route.
4	B1222, by New Inn Bridge - Newthorpe	Sel	rural	10	19	2	1	3	6	0	Visibility survey undertaken with amendments to the double white line system throughout the B1222, changes implemented as part of the surface dressing maintenance scheme undertaken in summer 2015. This site forms part of a police camera enforcement route.
8	A162/B1223 Raw Lane, Jnct - Towton	Sel	rural	9	16	3	1	2	6	1	No specific casualty reduction measures to be put forward following investigation. However the maintenance scheme for the area is to be extended to incorporate this junction and the markings of the existing safety scheme are to be refreshed, works to be carried out in summer 2015.
16	A63 Hull Rd/A19/Highfield Vw, Jnct- Barlby	Sel	rural	8	11	4	1	2	7	0	Roundabout constructed in May 2013, four personal injury collisions have occurred since implementation. No clear pattern on post implementation collisions, no further action currently planned, continuing to monitor site. This site forms part of a police camera enforcement route.
17	A64/Bramham Interchange West by A1 - Tadcaster	Sel	rural	8	11	2	1	4	7	0	Highways England are investigating a potential drainage improvement scheme at this location. On the county section a road safety engineering investigation found no recommendations, no clear collision pattern, continuing to monitor site. This site forms part of a police camera enforcement route.
36	C306 Toulston Lane/Rudgate, jnct, Tadcaster	Sel	urban	7	6	3	3	1	7	0	Signing improvements implemented early 2014. One slight collision since implementation, no further action, continuing to monitor site.
41	A64 225m South of Bilbrough Lodge, Bilbrough	Sel	rural	6	10	2	2	1	5	1	Potential lighting and vehicle restraint system scheme under investigation by Highways England. Traffic engineering investigation on going. This site forms part of a police camera enforcement route.

Reported Road Casualties in North Yorkshire: Annual Report 2014

2013/14 NYCC Rank	Location	District	Site Type	Collision Sev. Factor	Cas Sev. Factor	Collisions			Total Collisions 2012-2014	Total Child Cas	Comments
						2012	2013	2014			
42	A63 NB Rndbt W. A1(M) at Jnct 42 - Lumby	Sel	rural	6	10	1	2	2	5	0	Highways England advise that an engineering investigation is to be undertaken.
43	A64 Bilbrough Top/Redhill Field Ln, Jnct - Bilbrough	Sel	rural	6	10	1	2	2	5	0	Potential lighting and vehicle restraint system scheme under investigation by Highways England. This site forms part of a police camera enforcement route.
44	A1041 Carlton New Bridge, bend - Carlton	Sel	rural	6	9	1	3	1	5	3	Resurfaced in late 2014 and adverse camber sign erected, investigation on going small scale signing improvements to be implemented in 2015/16.
69	A162/B1222 Bishopdyke Rd rndbt - Sherburn in Elmet	Sel	rural	6	6	2	0	3	5	0	Traffic engineering investigation found no recommendations, no clear pattern to collisions, continuing to monitor site. This site forms part of a police camera enforcement route.
76	A1041 Bawtry Rd/Canal Rd, Jnct - Selby	Sel	urban	5	14	1	2	1	4	1	Traffic engineering investigation on going.
87	A163/Cornelius Causeway/Lowmoor Rd, Jnct - North Duffield	Sel	rural	5	8	1	3	0	4	1	Sign improvement scheme to be implemented 2015/16.
100	Portholme Rd/Portholme Cres, Jnct - Selby	Sel	urban	5	6	1	2	2	5	1	Traffic engineering investigation found no recommendations, no clear pattern to the collisions, continuing to monitor site.
101	A1041 Park St/James St - Jnct/area - Selby	Sel	urban	5	6	1	1	2	4	1	Traffic engineering investigation on going.
104	A162/A63 Main St, Rndbt, Lumby	Sel	rural	5	6	1	2	2	5	0	Development in area to provide improvements to the roundabout, widening circulatory carriageway and changes to kerb lines. No additional action beyond these measures, continuing to monitor site.
128	A63/ A1041 Bawtry Rd, Rndbt - Selby	Sel	rural	4	7	1	2	1	4	0	Junction operation investigation underway to identify air quality and congestion relief measures.
129	A1041 Bawtry Rd/Barlow Road, Jnct - Barlow	Sel	rural	4	7	1	2	1	4	0	Sign improvement scheme to be implemented 2015/16.
135	A1041 Park St/A19 Gowthorpe - Jnct/Area - Selby	Sel	urban	4	6	2	1	1	4	0	Traffic engineering investigation found no recommendations, no clear pattern to the collisions, continuing to monitor site.
145	Scott Rd / Filderstadt circle, Rndt - Selby	Sel	urban	4	5	2	1	1	4	0	Traffic engineering investigation on going.
153	A19 Gowthorpe/A19 Brook St/A1238 Gowthorpe/Scott Rd, Jnct - Selby	Sel	urban	4	4	1	1	2	4	0	Traffic engineering investigation found no recommendations, no clear pattern to the collisions, continuing to monitor site.