

Ryedale District (Area 4)

Ryedale district in brief

- ◆ Six people, all of whom were adults, were **killed** on Ryedale's roads during 2015 compared to five adults, in 2014. There were 3 PTW riders, a car passenger, a pedestrian and the driver of a stolen ambulance.
- ◆ The number of people **Killed or Seriously Injured (KSI)** has decreased to 41 in 2015 from 50 in 2014. In terms of road user groups, the number of KSI has decreased in all vehicle type groups apart from "other vehicle types" (+2). The biggest decrease was in the number of pedestrians (-5), followed by car occupants (-3), P2W (-2) and goods vehicles (-1).
- ◆ The number of **total casualties** in road collisions reported to the police in 2015 was 217, down by 5% on 2014 (229). This decrease is mirrored by the car road user group which saw a decrease of 16 and goods vehicles which saw a decrease of 10 casualties in 2015. Increases were seen in the number of PTW casualties from 28 to 33, pedal cyclists from 12 to 14 and other vehicle types from 1 to 8.
- ◆ The reported number of **child KSI casualties** (aged 0-15) has reduced to 0 in 2015 from 3 in 2014. This is the second time of record that there have been no children killed or seriously injured in Ryedale. (The last time this happened was in 2013).
- ◆ The number of **cyclist** casualties has increased by 6% from the 2010-14 baseline average. Child cyclist casualties (3) have increased by 2 since the previous year.
- ◆ **Pedestrian** casualties stayed the same at 18 in 2015 which is 29% greater than the 2010-14 baseline average of 14.
- ◆ The number of **powered two wheeler (PTW)** casualties has increased by 18% since last year (from 28 to 33). The increase is only seen amongst PTW riders and pillion who were slightly injured. Overall the number of PTW casualties in the district is 2% above the baseline average.
- ◆ A total of 149 **road collisions** that resulted in someone being injured were reported to the police in 2015, 3% less than in 2014 (154). This total works out at an average of 12 collisions per month or 3 per week.

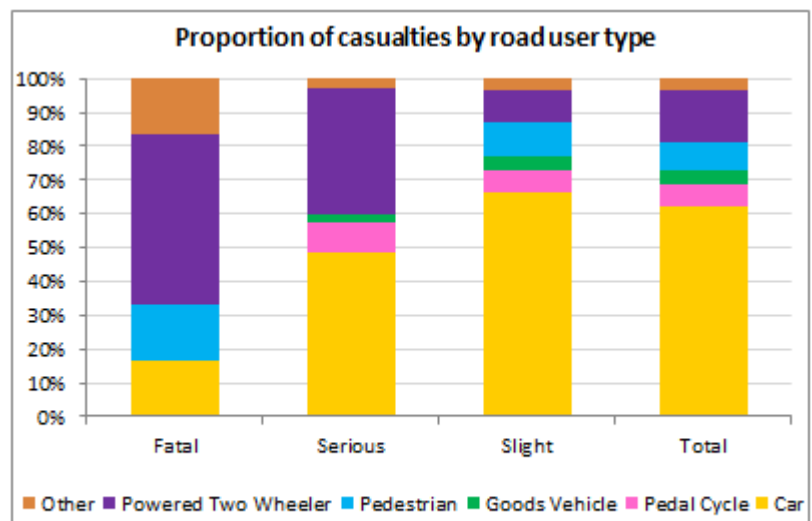


Figure 16 - Proportion of all casualties by road user type in 2015 - Ryedale
Source - Road Safety & Travel Awareness, North Yorkshire County Council

All Casualties - Ryedale

The trend in road casualties reported to the Police in Ryedale continued on its downward trend though there are some high low variances within this trend, it is overall a downward trend. 2015 was the second lowest year since records began for all casualties in the district, only 2011 saw less.

In 2015, the district has recorded 12 fewer casualties compared to the previous year. The decrease is mainly explained by the lower number of car occupant casualties (down by 11%). Lower numbers were also seen in the number of goods vehicle casualties (down by 10).

The district performance (-8%) is better than the reduction in the total number of casualties recorded in North Yorkshire as a whole (-1%) compared to the baseline.

Facts about all casualties in 2015

- ◆ There were 217 casualties in 2015, 12 less than in 2014 (a 5% decrease).
- ◆ Car occupants make up the largest proportion of road casualties (62%); followed by powered two wheeler riders (15%), pedestrians (8%), pedal cyclists (6%), goods vehicles (4%) and other vehicles (4%)
- ◆ The number of casualties recorded in 2015, is 8% below the 2010-14 average.
- ◆ The number of children injured (15) which represent 7% of all casualties in 2015; was 3 lower than 2014.
- ◆ Cyclist casualties increased, and the 2015 total (14) is now 2 higher than in 2014 and is also 6% above the 2010-14 average (13).

Ryedale	Baseline (Avg 10-14)	2012	2013	2014	2015	2015 vs baseline	Statistically significant change
Fatal	6	2	11	5	6	7.1%	—
Serious	55	63	61	45	35	-36.1%	↑
Slight	176	174	192	179	176	0.1%	—
Total	236	239	264	229	217	-8.1%	—
KSI	60	65	72	50	41	-32.1%	—
Child KSI	2	1	0	3	0	-100.0%	—
Young Person KSI	13	20	15	12	8	-39.4%	—
Adult Person KSI	25	24	30	21	17	-32.0%	—
Older Person KSI	15	15	19	12	12	-21.1%	—
Elderly Person KSI	5	5	8	2	4	-13.0%	—
Pedestrian KSI	4	4	4	6	1	-75.0%	—
Cyclist KSI	4	7	2	3	3	-21.1%	—
PTW KSI	20	18	27	18	16	-18.4%	—
All Child Casualties	21	21	17	18	15	-27.9%	—
All Cyclist Casualties	13	21	13	12	14	6.1%	—

Table 16 - Reported road traffic casualties and severity since 2012 - Ryedale
Source - Road Safety & Travel Awareness, North Yorkshire County Council

Killed or Seriously Injured (KSI) Casualties - Ryedale

In 2015, with a total 41 KSI casualties, Ryedale's casualty numbers are 32% below the 2010-14 average (60). This is the lowest year on record for the number of KSI casualties in the Ryedale district.

The year saw a decrease to the number of pedestrian KSI casualties which have fallen by 5 over the previous year, car KSIs were down by 3, P2W by 2 and goods vehicle by 1; other KSI casualties was up by 2.

The number of KSI (0) amongst children (0-15 years old) was 3 down on the previous year and the joint lowest on record.

Facts about KSI casualties in 2015

- ◆ The number of people killed or seriously injured fell 18% to 41 in 2015.
- ◆ The three most vulnerable road user groups (Pedestrian, Cyclist and PTW riders), between them account for 49% of all KSI casualties. This is similar to other districts.
- ◆ The decrease in KSI casualties in 2015 is associated with a decrease in pedestrians, car occupants and PTW casualties (down by 5, 3 and 2 respectively).
- ◆ The district saw slight increases in the number of other vehicle KSI casualties (from 0 to 2).
- ◆ Cyclist KSI casualties stayed the same at 3 in 2015.
- ◆ The two other vehicle type KSI casualties recorded in 2015 were the driver of a stolen ambulance and a bus driver.

The decrease in KSI in 2015 against 2014 is encouraging and the long term trend is downwards.

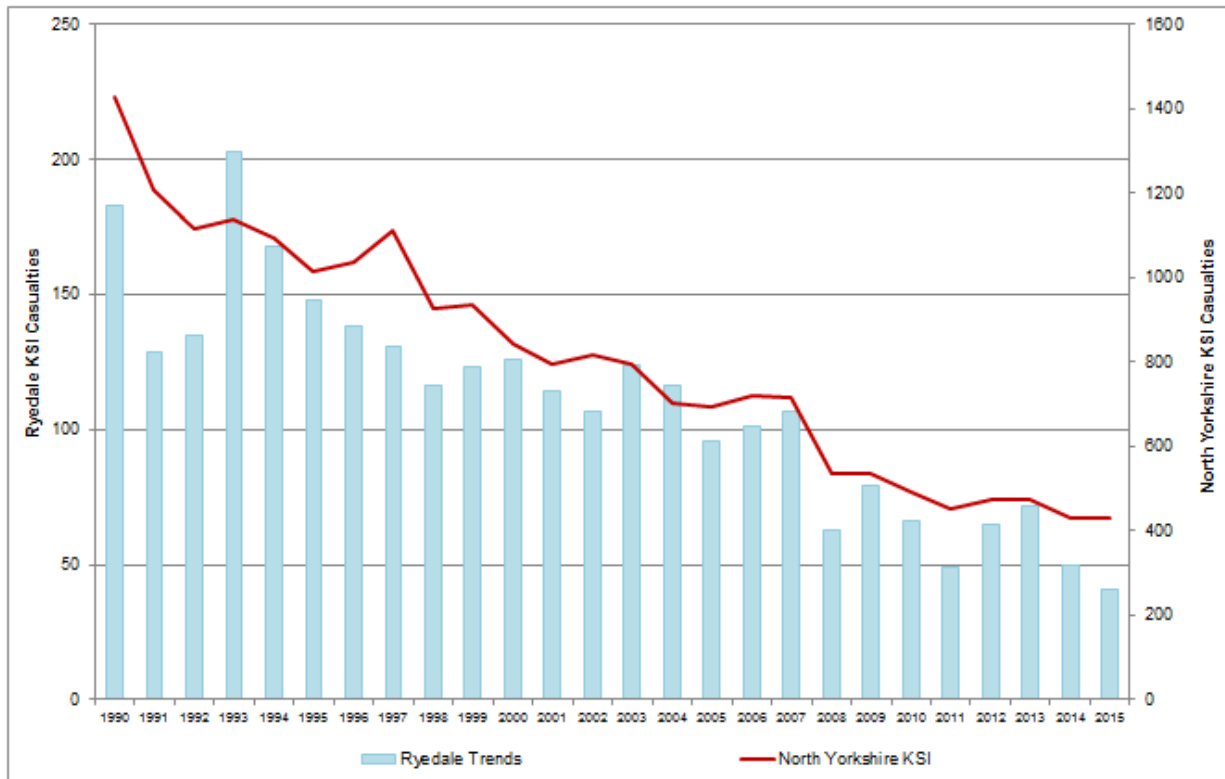


Figure 17 - Reported road traffic KSI casualty trends since 1990 - Ryedale
Source - Road Safety & Travel Awareness, North Yorkshire County Council

Child Casualties - Ryedale

The total number of child casualties (15) recorded in 2015 is 3 below the previous year (18), Child KSI casualties has decreased from 3 in 2014 to 0 in 2015. This was the joint lowest year for child KSI casualties on record in the district.

This year's overall child casualty numbers show a reduction of 28% against the 2010-14 baseline average, and a 17% decrease since the previous year (2014).

Looking at the 15 child casualties slightly injured in 2015, 9 were car passengers, 3 were pedal cyclists and 3 were pedestrians. The number of car passengers had decreased by 5 on the previous year and the number of pedal cyclist has increased by 2.

Facts about child casualties in 2015

- ◆ Seven of the children injured were secondary school age, 7 were primary aged and 1 was pre-school..
- ◆ The three most common causation factors in collisions involving children is vehicle failed to look properly, vehicle failed to judge others path or poor turn or manoeuvre.
- ◆ 2 of the 3 child cyclist casualties were not wearing a cycle helmet.
- ◆ The three pedestrian child casualties were 1 driver at fault 2 pedestrians at fault.
- ◆ The majority of collisions involving children occurred on a weekday (11/15) but of those around half were at school run time, with slight peaks at 1400-1459 and 1700-1759.

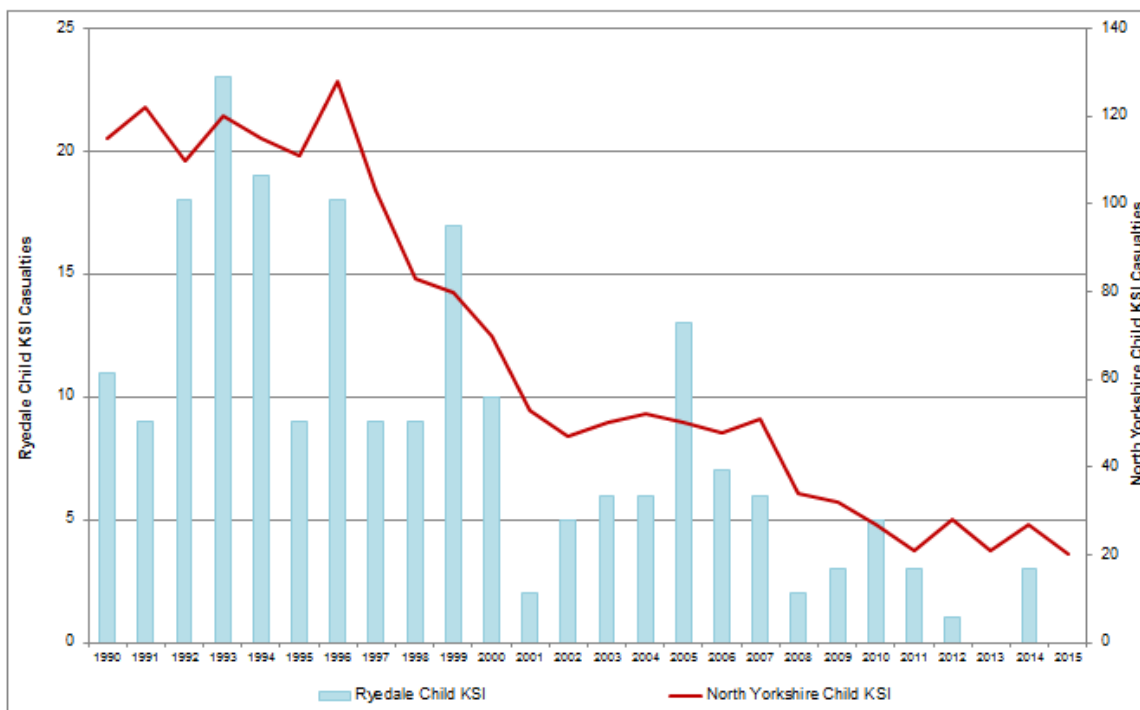


Figure 18 - Reported road traffic KSI child casualty trends since 1990 - Scarborough
Source - Road Safety & Travel Awareness, North Yorkshire County Council

Road Safety Education and Community Engagement – Ryedale

Children - Primary School

Some 522 Year 5 and 6 primary school pupils at 31 schools across Ryedale were trained to cycle on the road in the Bikeability cycle training programme over the last year. I

Over 1400 Year 6 students from Scarborough Whitby and Ryedale schools attended the Crucial Crew multi-agency safety education event at the TA Barracks, Scarborough. The children learned road safety facts by taking part in active scenarios and workshop sessions with follow up lesson information provided to their teachers.

The Road Safety and Travel Awareness Officer has supported several local schools and communities concerned about school gate parking issues and provided advice together with our School Gate Parking Resource Pack.

Children - Secondary School

Safer Ryedale have been invited to attend a multi-agency event called “Prison- me? No way” at Malton secondary school whilst Lady Lumley’s Secondary School, Pickering, hosted a Drive Alive Day in October 2015

We support the secondary schools to deliver road safety lessons throughout the curriculum, with the benefit of our own specialist curriculum adviser. A number of High Schools are now using safer cycling resources in Year 7 to encourage pupils to cycle to school and to do so safely. Setting the habit of cycling is important for health benefits throughout life and enables affordable access to school, college and work.

Young Drivers

We worked with the local area Road Safety Group to encourage safe behaviours and good driving amongst young drivers and to provide positive role models amongst them.

Working with Driving Instructors

We have trained an additional 7 driving instructors who are now registered with us to provide the Enhanced Pass Plus training course to newly qualified drivers and Older Driver Refresher Drives for those who want to keep themselves up to date and confident in their driving.

Motorcyclists



Face to face engagement events at popular motorcyclist destinations such as Seeways Café, Fridaythorpe and Helmsley Market Place have proved a successful means of disseminating campaign messages directly to motorcyclists and an efficient method of targeting large numbers and listening to their concerns and suggestions.

Information packs have been distributed including the newly updated “Bikers Guide to North Yorkshire”. The route list also includes the A170 from Thirsk to Scarborough and the A64 from Tadcaster to Scarborough. It recommends further training, appropriate safer riding techniques and behaviours to reduce risk of injury and consideration of local communities and other road users. It is also available online through our website www.roadwise.co.uk.

Image 17 - A poster design also used in the motorcycling press

Cyclists

We promote safer cycling initiatives throughout the county, especially on the Tour de Yorkshire and other popular routes. The “*Cycle Yorkshire, Ride the Routes*” app uses maps and videos to provide advice on a range of issues including rural riding preparation, avoiding fatigue related collisions and hazard recognition and avoidance techniques. We also distribute cards and fliers to cycle shops, hire centres, guest houses and cafes on cycling routes to get safe cycling messages to cyclists who are riding our long distance routes. We have recently delivered a bespoke Bikeability course for 3 Adults with specific learning needs in the Malton area, enabling them cycle safely, stay healthy and to live more independently within our community.



Image 18 – Discussion with local residents in Malton

Older People

Over the summer months Safer Ryedale held 3 Older Driver Events and 27 older drivers in Ryedale took refresher drives.

Driving at Work

During 2015/16 the Driver Training Officer facilitated 6 safer driving for work seminars or training sessions for NYCC staff in Ryedale.

Community Engagement/ Local Partnership Working

The Road Safety team contributed to a number of events and initiatives working in partnership with Safer Ryedale and the Police Rural and Neighbourhood teams. This year the focus has centred on cyclist, motorcyclist and older driver safety.

In July/August the Safer Ryedale team attended the Ryedale Show, and Thornton Dale Show which attracted approximately 25,000 visitors. These shows offers a valuable opportunity to engage with people, especially those from the most rural and isolated communities.

During the run up to the Christmas holidays, The Safer Ryedale Team held a Don't Drink and Drive event in Helmsley. This year the engagement events included a focus on alcohol awareness, in particular it is common for people to underestimate the number of units of alcohol they have consumed and the time taken for alcohol to be processed and removed from the body. In June 2015/2016 the Team also supported the Police drug and drink drive enforcement campaign with a series of road shows in town centres across the district.

Speed Management

Between September 2015 and July 2016, the Area 4 Highways Office, Kirby Misperton processed 22 speed concern enquires. This resulted in 1 speed matrix sign deployment and 4 requests for Police speed enforcement. From discussions at the SMP meetings Safer Ryedale have carried out 8 speed education events.

Cluster sites

There are 170 cluster sites identified in North Yorkshire compared with a total of 154 the previous year. Of these 170 sites, 12 are located within Ryedale and details of these are contained on the next page. Of these, 6 are urban (40 mph or lower speed roads) and 4 are rural (over 40 mph limit roads). Of all Ryedale collisions 2013-2015, 13% occurred at cluster sites; 12% of all collisions in Ryedale in 2015 occurred at cluster sites.

The collision prevention schemes identified, designed and delivered in 2016/17 to address cluster site collisions are-

- ◆ A169 Saltergate Bank – installation of vehicle restraint system

Road Safety Engineering Activities – Ryedale

Collision cluster site locations

2016/17 NYCC Rank	Location	District	Site Type	Collision Sev. Factor	Cas Sev. Factor	Collisions			Total Collisions 2014-2015	Total Child Cas	Comments
						2013	2014	2015			
2	A169 Saltergate Bank by Horcum Woods Nr Hole of Horcum	Rye	rural	13	18	1	5	4	10	1	2015/16 collision reduction study recommended signing improvement scheme and assessment for a vehicle restraint system. Recommendations are being progressed for installation in 2016/17.
18	A64 Trousedale Fl / Centenary Way jct to Low Hutton	Rye	rural	9	12	2	2	2	6	1	Highways England site.
41	Church St/Norton Rd/Welham Rd, Jct - Norton	Rye	urban	7	8	1	3	3	7	1	Engineering investigation on going
44	Market Pl/B1257 Church St, Jct - Helmsley	Rye	urban	7	8	2	1	2	5	0	No clear collision pattern, continue to monitor, no further action.
94	A64/Chestnut Av, Jct - Crambeck	Rye	rural	5	6	2	1	2	5	1	Highways England site.
98	A169/A64, Rndbt North End - Malton	Rye	rural	5	6	2	2	1	5	0	Joint NYCC and Highways England site, development to add a mini roundabout at Eden Camp which may provide some benefit to this site.
100	A169 at access to Pickering Showground	Rye	rural	5	6	1	1	2	4	0	Engineering investigation on going
122	B1248 Scarborough Rd/ Parliament St Jct - Norton-on-Derwent	Rye	urban	5	5	2	1	1	4	0	Engineering investigation on going
125	B1249 Beverley Gate/A64 Staxton Hill, jct, Staxton	Rye	urban	4	15	1	2	1	4	3	Highways England site
129	A64/Scotchman Ln, Jct - Flaxton	Rye	rural	4	7	3	1	0	4	0	Highways England site.
137	B1257 Newbiggin/ Finkle St, Jct - Malton	Rye	urban	4	6	2	2	0	4	0	Engineering investigation on going
151	B1257/ The Balk, Xrds - Slingsby	Rye	urban	4	5	3	1	0	4	0	Engineering investigation on going