

Selby district (Area 7)

Selby district in brief

- ◆ One adult person, was **killed** on Selby's roads during 2015, this is the lowest number of people killed on Selby's roads since modern records began in 1990. In 2014 6 people were killed on Selby's roads. The 1 person killed was a powered two wheeler (PTW) rider.
- ◆ The number of people **killed or seriously injured (KSI)** was 36 in 2015 and has decreased from 53 in 2014. In terms of road user groups, the number of KSI has decreased amongst PTW (-6), pedal cyclists (-5), pedestrians (-5), car occupants (-2) and other category (-1), and increased in the number of goods vehicle occupants (+2).
- ◆ The number of **total casualties** in road collisions reported to the police in 2015 was 250, down 5% on 2014 (264). This decrease is mostly due to the pedestrian group which saw a 42% decrease in casualties in 2015 (from 24 to 14), the car occupant group also saw an overall decrease from 151 to 144 and the PTW group reduced from 41 to 36. The pedal cyclists and goods vehicles groups saw increases from 29 to 35 and from 16 to 18 respectively.
- ◆ The reported number of **child KSI casualties** (ages 0-15) in the district in 2015 (1) is below the previous year (7) and the lowest year since modern records began. The one child who was seriously injured was a pedestrian.
- ◆ The number of **cyclist** casualties has increased by 21% from 29 in 2014 to 35 in 2015. Child cyclist casualties (5) have increased by 3 from the previous year (2).
- ◆ **Pedestrian** casualties increased by 42% to 24 in 2014 from 14 in 2014. The increase is reversed amongst pedestrian KSI (2) which is 5 less than the total (7) recorded the previous year.
- ◆ The number of **powered two wheeler (PTW)** casualties has decreased by 12% to 36 in 2015 from 41 in 2014. The PTW KSI (14) is 30% less than the total (20) recorded the previous year
- ◆ A total of 191 **road collisions** that resulted in someone being injured were reported to the police in 2015, 12% more than in 2014 (170). This total works out at an average of 16 collisions per month or 4 per week.

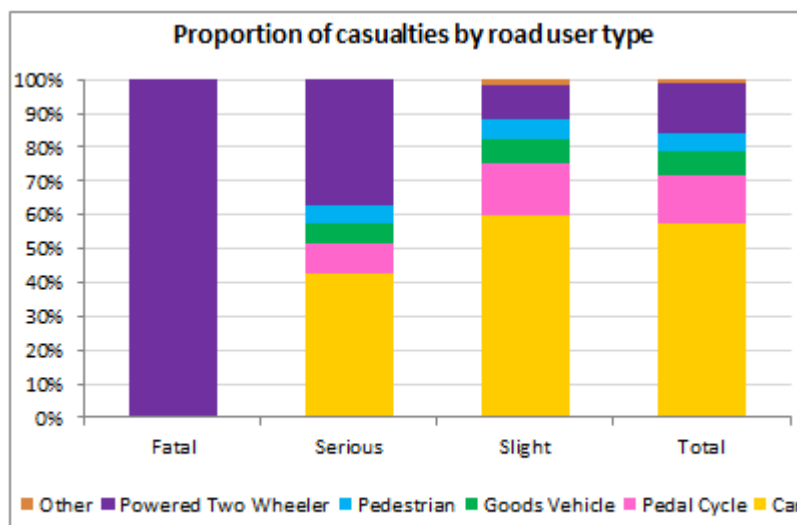


Figure 25 - Proportion of all casualties by road user type in 2015 - Selby
Source - Road Safety & Travel Awareness, North Yorkshire County

All Casualties - Selby

The trend in road casualties reported to the Police in Selby continues downwards and is still below the overall downward trend line.

In 2015, the district has recorded 14 fewer casualties compared to the previous year. The decrease is shown in the reduction of pedestrian casualties (-10), car occupant casualties (-7) and PTW (-5). The number of pedal cyclists and goods vehicle types each increased in 2015 (by 6 and 2 respectively).

The decrease in all casualties injured in the Selby district is better than the countywide picture (-12% in Selby, -1% in North Yorkshire compared to baseline).

Facts about all casualties in 2015

- ◆ There were 250 casualties in 2015, 14 less than in 2014 (a 5% decrease).
- ◆ Car occupants make up the largest proportion of road casualties (58%); followed by PTW (14%), pedal cyclists (14%), goods vehicle (7%), pedestrians (6%) and others (1%).
- ◆ The number of casualties recorded in 2015, is 11% below the 2010-14 baseline average.
- ◆ The number of children injured (16) which represent 6% of all casualties in 2015; was 14 below 2014 (30).
- ◆ Cyclist casualties increased in 2015 the 2015 total (35) is now 61% above the 2010-14 average (22).

Selby	Baseline (Avg 10-14)	2012	2013	2014	2015	2015 vs baseline	Statistically significant change
Fatal	6	4	6	6	1	-83.3%	—
Serious	46	51	44	47	35	-23.9%	—
Slight	230	231	220	211	214	-7.0%	—
Total	282	286	270	264	250	-11.3%	—
KSI	52	55	50	53	36	-30.8%	—
Child KSI	5	5	3	7	1	-78.3%	—
Young Person KSI	12	12	14	14	7	-40.7%	—
Adult Person KSI	20	22	14	18	14	-30.0%	—
Older Person KSI	13	14	15	14	14	7.7%	—
Elderly Person KSI	3	2	4	0	0	-100.0%	—
Pedestrian KSI	4	5	4	7	2	-52.4%	—
Cyclist KSI	4	2	6	8	3	-28.6%	—
PTW KSI	19	17	16	20	14	-27.1%	—
All Child Casualties	24	27	22	30	16	-33.9%	—
All Cyclist Casualties	22	19	31	29	35	60.6%	—

Table 19 - Reported road traffic casualties and severity since 2012 - Selby

Source - Road Safety & Travel Awareness, North Yorkshire County Council

Killed or Seriously Injured (KSI) Casualties - Selby

In 2014, with a total 36 KSI casualties, numbers have fallen and are 31% below the 2010-14 baseline average (52).

The year saw a decrease in the number of PTW KSI casualties which has fallen by 6 from the previous year, pedal cyclists reduced by 5, pedestrians by 5, car occupants by 2 and other vehicle types by 1. The number of goods vehicle casualties increase by 2.

The number of KSI (1) amongst children (0-15 years old) has reduced in 2015 compared to the previous year (7).

The decrease in KSI in 2015 against 2014 is encouraging; and 2015 has been the lowest year for KSIs in the Selby district since modern records began.

Facts about KSI casualties in 2015

- ◆ The number of people killed or seriously injured fell by 31% to 36 in 2015.
- ◆ The three most vulnerable road user groups (pedestrian, cyclist and PTW riders), between them, account for 53% of all KSI casualties.
- ◆ The decrease in KSI casualties in 2015 is associated with decreases in the number of PTW (-6), pedal cyclist (-5), pedestrian (-5), car occupants (-2) and other (-1).
- ◆ The district performed slightly worse for the goods vehicles (+2).
- ◆ Cyclist KSI casualties fluctuate from year to year but appear to hold an overall downward trend in Selby – which differs from most other districts. This will be closely monitored following the Tour de Yorkshire running through the district in 2015.

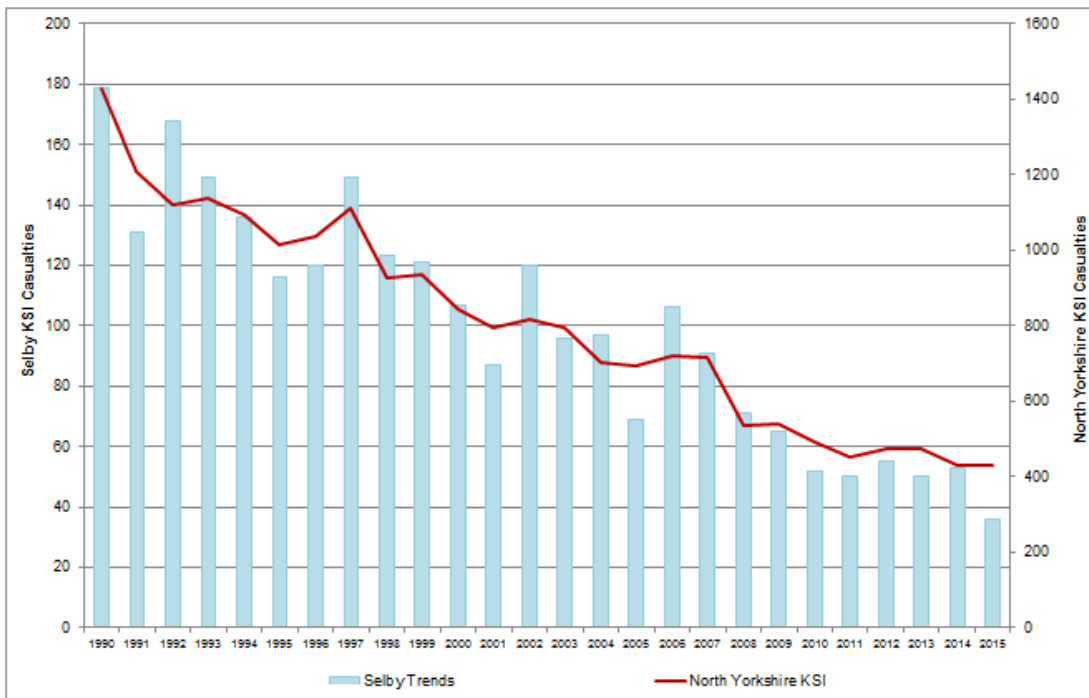


Figure 26 - Reported road traffic KSI casualty trends since 1990 - Selby
Source - Road Safety & Travel Awareness, North Yorkshire County Council

Child Casualties - Selby

The number of almost halved compared to the previous year (30), the overall trend continues to be downwards despite some variations from year to year.

The number of KSI (1) amongst children (0-15 years old) has decreased in 2015 compared to the previous year (7) and is at its lowest number since records began.

This year's overall child casualty numbers show a decrease of 34% against the 2010-14 baseline average, and a 47% decrease since the previous year.

The reduction in child casualties is mainly associated with the decrease in all children car casualties from 11 to 3, though child pedestrian casualties decreased from 13 to 7, child PTW passenger casualties by 2 (from 2 to 0), child goods vehicle passenger casualties also decreased by 1 (from 2 to 1). Though child pedal cyclist casualties did increase by 3 from 2 to 5.

Facts about Child casualties in 2015

- ◆ 8 of the 16 children injured in the Selby district were secondary age and 8 were primary age.
- ◆ The most frequent causation factor in collisions involving children is vehicle driver failed to look properly, followed by vehicle failed to judge other persons path or speed and pedestrian failed to look properly.
- ◆ Of the 5 child pedal cyclists injured, 2 were wearing a cycle helmet, 2 weren't wearing a helmet and for 1 is not known.
- ◆ In the 7 pedestrian child collisions, 5 occurred when a child pedestrian stepped out without looking, 1 when a car crossed a red light and 1 when a car reversed onto the pavement.
- ◆ Of the 5 child pedal cyclist casualties, 4 rode out into the path of another vehicle without looking and 1 was cut up by another vehicle.
- ◆ The majority of collisions involving children occurred on a weekday (12 of 16, these collisions were very dispersed through the day so there is no particular pattern to the times except for a slight increase on an evening after school.

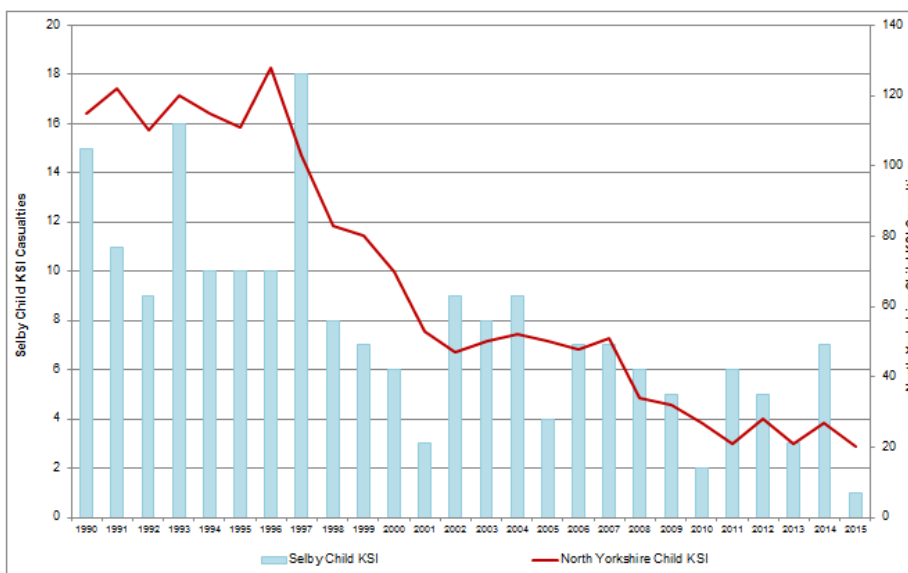


Figure 27 - Reported road traffic KSI child casualty trends since 1990 - Selby
Source - Road Safety & Travel Awareness, North Yorkshire County Council

Road Safety Education and Community Engagement - Selby

Children - Primary School

Junior Road Safety Officers are Year 5 pupils in schools who relay key Road Safety messages to their whole school community. The pupils take part in fun learning activities which they can share with others. During their time in office, they are supported by the County Council Road Safety and Travel Awareness Team and their school

There are many ways the pupils can get involved, including:

- ◆ School assemblies
- ◆ Notice boards
- ◆ Competitions

Schools in the Selby area are keen to participate in the Junior Road Safety scheme each year. This year over 25 schools were involved. Each school submits a diary as a record of their year's activities in July.

The aims of the scheme are:

- ◆ To reduce the numbers of children injured on the roads
- ◆ To promote a sense of responsibility and positive citizenship among children
- ◆ To enhance the importance of safety among pupils, parents and school staff
- ◆ To develop innovative ways of putting safety messages across



Image 32 – Prize winning Junior Road Safety Officers (JRSO) beside their school notice board

In May the team attended the Primary Head Teachers Conference at the Pavilions to promote Road Safety in the Primary Curriculum. This year the emphasis was on getting more schools around the county to engage pupils in thinking about their school journey on transition to secondary school. We gave out Transition resources to schools to use.



Image 33 – Promotion of Junior Road Safety Officer scheme to Primary School's

The Road safety and Travel Awareness Officer has supported several local schools and communities concerned about school gate parking issues and provided advice together with our School Gate Parking Resource Pack.

The team attended the STEM (Science Technology and Maths) fairs at Barlby High School and Selby High School STEM fair to deliver a Safer Cycling Workshop science based to around 75 pupils on each day.

Riccall Primary School were the winners of a Junior Road Safety competition for a Scooter pod to store their scooters at school.

Bikeability is a new improved version of cycle training designed to provide the skills and confidence to ride their bikes on today's roads for pupils in Year 5&6. The training is led by qualified National Standard Instructors. The training takes place over an intensive 2 full days.

- ◆ Day 1 will include Level 1 off road training and the start of Level 2 training covering on road skills and independent cycling.
- ◆ Day 2 will continue with level 2 training.

Some 558 Year 5 and 6 primary school pupils over 47 courses have benefitted from participation in the Bikeability cycle training programme over the last year. We have a dedicated team instructors working in the area led by a hardworking and efficient Road Safety Assistant.



Image 34 – Bikeability training

A small number of schools across the county including Barlby Community Primary School also took part in Bikeability Balance which is Balance Bike training for Foundation aged pupils.



Image 35 – Bikeability balance training

Children – Secondary School

The 'Drive Alive' event that addresses young drivers, potential drivers and passengers risks and responsibilities was delivered at, Selby College and Tadcaster Grammar School. Throughout the day students receive sessions from North Yorkshire Police, North Yorkshire Fire & Rescue, and members of the Road Safety team including a session on drink/drug driving. David and Janet Warin end the day by sharing their experiences of losing their son Daniel in a Road Traffic accident 3 weeks after passing his driving test. The feedback from pupils following the Drive Alive day is always very positive.

'It opened my eyes to show anyone can be affected by collisions on the roads and it affects a lot of people when a collision takes place.' Student at Selby College

'I really enjoyed it and found it moving and insightful. It was really the best session and a real privilege.' Student at Selby College

Transition from primary to secondary school is one of the biggest steps a pupil will take in their school life and how they choose to travel to their new school needs careful consideration and planning and offers an opportunity to develop positive travel habits. Resources including the 'Way to Go' and 'Move on Up' magazines have been made available to Primary Schools to use with Year 6 pupils to prepare them for the journey to secondary school and raise awareness of road safety issues.

Young People

The "Enhanced Pass Plus" programme has been promoted to young, novice drivers in the district. Specially trained driving instructors have been recruited, who have learned additional coaching skills from the Road Safety Team. The Enhanced Pass Plus programme includes a number of practical driving lessons to experience motorways, city driving and other more advanced challenges whilst accompanied by an experienced driving instructor. The Road Safety and Travel Awareness Officer leads a further (compulsory) workshop session in which

the young or new drivers analyse crashes, explore attitudes, perceptions and risky behaviours in themselves and their passengers and peer groups and learn how to recognise and minimise potentially risky situations. The New Driver Discussion groups are held at Selby Fire Station this year. This initiative is supported by Public Health and Police & Crime Commissioner funding and is partly paid for by the young drivers themselves.

Working with Driving Instructors

We had an additional 8 driving instructors complete their training with us and are currently providing the EPP training for new drivers and Older Driver refresher drives for more experienced drivers who want to keep up to date and driving confidently and safely. We would welcome more instructors to join the register.

Motorcyclists

We continue to work with motorcyclists to reduce casualties and address local concerns. Face to face engagement at popular motorcyclist destinations took place at Squires Café as successful means of disseminating campaign messages directly to motorcyclists. We are grateful to the café proprietors for their unstinting support for this work.

The local Fire and Rescue Team together with NYCC Road Safety Officer visited Squires Café again in June as part of the CFOA Road Safety week to talk to motorcyclists and hand out our Motorbike packs.

We provide advice on safer responsible riding and promote post-test Rider Development Courses. In particular we distribute information packs including our “Bikers Guide to North Yorkshire” booklet that recommends appropriate safer riding techniques and behaviour to reduce risk of injury and also a safer riding tips DVD.

Advice for motorcyclists is available on the www.roadwise.gov.uk website, the “NYrides” videos use social media such as YouTube and Facebook, to raise awareness of hazards and consequences of risky behaviour.

We liaise with North Yorkshire Police Traffic Officers to maximise their enforcement activities and to promote Bikesafe, the police led rider assessment programme.

Biker Down courses for riders dealing with first aid and what to do if they are first on the scene of a motorcycle crash were held at Selby Fire Station.



Image 36 – Motorcycles at Squires Café

Cyclists

The Tour de Yorkshire passed through the Selby area this year. The team distributed a Tour de Yorkshire activity booklet to all the schools on and near to the route. Members of the team also held an bike activity day at St Joseph's Primary School in Tadcaster.

We promote safer cycling initiatives throughout the county, especially on the Tour de France and Tour de Yorkshire and other popular routes. The **“Cycle Yorkshire, Ride the Routes”** app uses maps and videos to provide advice on a range of issues including rural riding preparation, avoiding fatigue related collisions and hazard recognition and avoidance techniques.

Older People

The Road Safety Team have organised a number of “refresher drives” to drivers over 50 to provide them with driving tips, techniques and advice. These have been attended by 12 drivers across Hambleton and Richmondshire.

Driving at Work

A number of initiatives have been held including Safe Driving for Work presentations, training for vehicle safety checks, trailer, minibus and HGV training, practical driver training and driving risk management training.

Community Engagement/ Local Partnership Working

Winter driving and winter and summer drink drive campaigns were held across Selby and Tadcaster.

Also several Seatbelt surveys have been completed in various locations across the Selby area including: Brayton, Barlby, Sherburn, Barkston Ash and Towton.

Image 37– Road Safety Officer at community engagement event



Speed Management

There have been regular deployments of the data loggers and matrix signs where residents have reported their concerns. The findings are then discussed and assessed by the local Road Safety Group where local highways engineers, fire and rescue, road safety and police decide the most appropriate course of action. It is often the case that, although traffic is a cause for some concern to local residents, the evidence shows that many vehicles are not exceeding the speed limit. In these cases some local publicity may help and some communities have taken

up the offer of a temporary Vehicle Activated Sign being installed for 3 x 6 week periods in a year, by contributing to the cost of installing and removing the sign.

There have been 72 speed management requests in the Selby district in the last year, of which 43 surveys have been completed and 31 final letters have been sent out, of these 31 letters. 20 were no further action, 7 have been sent for review by the highways engineers and 4 were not applicable.

The police Community Speed Watch scheme is now being rolled out on a district by district basis to be offered to communities where a speeding concern has been investigated and there is insufficient grounds for other interventions such as engineering or enforcement. Community Speed Watch enables concerned communities to help themselves to address these lower level but real concerns with an organised and police supported scheme.

Cluster sites

There are 170 cluster sites identified in North Yorkshire compared with a total of 154 the previous year. Of these 170 sites, 25 are located within Selby and details of these are contained on the next page. Of these, 13 are urban (40 mph or lower speed roads) and 12 are rural (over 40 mph limit roads). Of all Selby collisions 2013-2015, 20% occurred at cluster sites; 21% of all collisions in Selby in 2015 occurred at cluster sites. A weighting index is applied based on the severity of collision i.e. slight, serious or fatal using weightings of 1, 2 and 3 respectively, it is then sorted by the collision severity factor, then by the casualty severity factor and lastly by total child casualty numbers in order to give every site a unique risk based ranking.

The collision prevention schemes, identified, designed and to be delivered in 2016/17 to address cluster site collisions are-

- ◆ Toulston Lane/Rudgate crossroads, Tadcaster – small sign and line improvement scheme, larger collision reduction investigation on-going.

Road Safety Engineering Activities – Selby

Collision cluster site locations

2016/17 NYCC Rank	Location	District	Site Type	Collision Sev. Factor	Cas Sev. Factor	Collisions			Total Collisions 2014-2015	Total Child Cas	Comments
						2013	2014	2015			
17	A64 by Little Chef - Bilbrough	Sel	rural	9	15	2	2	0	4	1	Highways England site.
24	C306 Toulston Lane/Rudgate, jnct, Tadcaster	Sel	urban	8	12	3	1	2	6	1	Small scale signing and lining works undertaken summer 2016, wider investigation currently on going.
38	A64/A162 Flyover WBC off slip, Tadcaster	Sel	rural	7	9	3	1	1	5	0	Engineering investigation on going.
39	Portholme Rd/Portholme Cres, Jnct - Selby	Sel	urban	7	9	2	2	3	7	0	Engineering investigation on going
51	A19/Selby Rd Interchange By M62, Rndbt - Eggborough	Sel	urban	7	7	0	1	3	4	0	Highways England site
55	B1222, by New Inn Bridge - Newthorpe	Sel	rural	6	12	1	3	0	4	0	Engineering investigation on going.
64	A19 Gowthorpe/A19 Brook St/A1238 Gowthorpe/Scott Rd, Jnct - Selby	Sel	urban	6	8	1	2	3	6	0	Engineering investigation on going
81	A1041 Carlton New Bridge, bend - Carlton	Sel	rural	5	8	3	1	0	4	3	Small scale signing improvement scheme installed in March /April 2016. Now being monitored
87	A63 NB Rndbt W. A1(M) at Jnct 42 - Lumby	Sel	rural	5	7	1	2	1	4	0	Highways England site.
93	A162 / Old North Rd, Jnct - Brotherton	Sel	urban	5	6	3	0	1	4	2	Engineering investigation on going
97	A1041 Park St/James St - Jnct/area - Selby	Sel	urban	5	6	1	2	1	4	1	Engineering investigation on going
103	A1041 Bawtry Rd/Canal Rd, Jnct - Selby	Sel	urban	5	6	2	1	2	5	0	Engineering investigation on going
107	A19 Doncaster Rd/A63, Rndbt - Brayton	Sel	rural	5	5	0	1	4	5	1	Engineering investigation on going
113	A19 Barlby Rd at Thomas St - Selby	Sel	urban	5	5	0	2	2	4	1	Engineering investigation on going
114	A19 Brook St, Londesborough St - Selby	Sel	urban	5	5	0	0	4	4	1	Engineering investigation on going
118	A64/Bramham Interchange West by A1 - Tadcaster	Sel	rural	5	5	0	1	3	4	0	Highways England site.
131	A64 Bilbrough Top/Redhill Field Ln, Jnct - Bilbrough	Sel	rural	4	7	2	2	0	4	0	Highways England site.

Reported Road Casualties in North Yorkshire: Annual Report 2015

2016/17 NYCC Rank	Location	District	Site Type	Collision Sev. Factor	Cas Sev. Factor	Collisions			Total Collisions 2014-2015	Total Child Cas	Comments
						2013	2014	2015			
133	A1041 Bawtry Rd/Barlow Road, Jnct - Barlow	Sel	rural	4	7	2	1	1	4	0	2015/16 sign improvement scheme designed, to be installed in 2016/17.
148	A63/B1222, by Pointers Farm, Jnct - Newthorpe	Sel	rural	4	5	1	0	3	4	0	Engineering investigation on going
152	A1041/Oakneywood Drive - Selby	Sel	urban	4	5	1	2	1	4	0	Engineering investigation on going
154	B1223 Millgate/micklegate/the Quay, Jnct - Selby	Sel	urban	4	4	1	1	2	4	2	Engineering investigation on going
156	A659 Bridge St/A659 Kirkgate, Jnct - Tadcaster	Sel	urban	4	4	1	1	2	4	1	Engineering investigation on going
157	A1041 Park St/a19 Gowthorpe - Jnct/area - Selby	Sel	urban	4	4	1	2	1	4	1	Engineering investigation on going