

Craven District (Area 5)

Craven district in brief

- ◆ Four people, all of whom were adults, were **killed** on Craven’s roads during 2016 compared to 4 adults in 2015 and a baseline average of 5 per year for 2011-15. The four men who died in 2016 were all powered two wheeler (PTW) riders.
- ◆ The number of people **killed or seriously injured (KSI)** was 56 in 2016, an increase from 54 in 2015, but still a slight increase on the baseline average of 49. In terms of road user groups, the number of KSIs has decreased in all road user groups except for PTW group (+11) and goods vehicles (+2). The greatest increase was seen in the car occupant group which rose by 4, with cyclist and pedestrian groups both increasing by 3 and the other group increasing by 1.
- ◆ The total number of **all casualties** in road collisions reported to the police in Craven during 2016 was 237, a 10% increase on 2015 (216) and a 6% increase from the baseline. This increase is reflected in all but two vehicle type group, car occupants increased by 13, pedestrians by 10, PTW by 7 and goods vehicles by 3. The pedal cyclists saw a decrease of 9 and the other vehicle types saw a decrease of 3.
- ◆ There were no **child KSI casualties** (aged 0-15) in the district in 2016 which is 3 less than the previous year and 2 below the baseline average.
- ◆ The number of **cyclist** casualties has reduced by 30% to 21 in 2016 from 30 in 2015, which is also below the baseline average of 24.
- ◆ **Pedestrian** casualties increased by 77% to 23 in 2016 from 13 in 2015. This increase is the most pronounced amongst pedestrians slightly injured, which rose from 8 to 21.
- ◆ The number of **powered two wheeler (PTW)** casualties has increased from 13 in 2015, by 21% to 23 in 2016. The increase is most pronounced amongst PTW KSI (25) which is 9 more than the total (16) recorded the previous year.
- ◆ A total of 180 **road collisions** that resulted in someone being injured were reported to the police in 2016, 19 more than in 2015. This total works out at an average of 15 collisions per month or 4 per week.

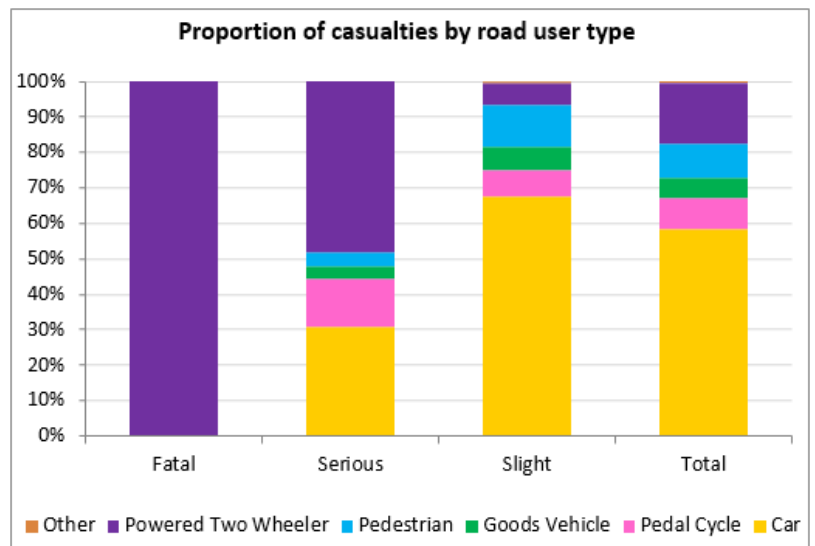


Figure 19 - Proportion of all casualties by road user type in 2016 - Craven
Source - Data Intelligence, North Yorkshire County Council

Reported Road Casualties in North Yorkshire: Annual Report 2016

All Casualties – Craven

The number of road casualties reported to the Police in Craven has seen a downward trend since 1990. However this trend appears to have changed from 2014 to become flat rather than continuing to reduce. In 2014 there were 220 total casualties, 216 in 2015 and 237 in 2016. However, no statistically significant changes were seen in the Craven district during these years.

In 2016, the district recorded 21 more casualties compared to the previous year. The increase is amongst car occupants (13), pedestrians (10), PTW (7), and goods vehicles (3) though the pedal cycle and other groups both decreased (by 9 and 3 respectively).

The districts overall performance of a 6.5% increase is worse than the reduction in overall casualties recorded in North Yorkshire (down by 2.5% over the baseline).

Facts about all casualties in 2016

- ◆ There were 237 casualties in 2015, 21 more than in 2016 (a 10% increase).
- ◆ Car occupants make up the largest proportion of road casualties (58%); followed by powered two wheeler riders (17%), pedestrians (10%) pedal cyclists (9%), goods vehicles (6%) and others (0%).
- ◆ The number of casualties recorded in 2016, is 6% above the 2011-15 baseline average.
- ◆ The number of children injured (12) which represents 5% of all casualties in 2016, was 2 more than in 2015.
- ◆ PTW casualties increased and the 2016 total (40) is now 14% above the 2011-15 average (35).
- ◆ There was an average of 15 collisions per month or 4 per week in which someone was hurt.

Craven	Baseline (Avg 11-15)	2013	2014	2015	2016	2016 vs baseline	Statistically significant change
Fatal	5	7	9	4	4	-25.9%	—
Serious	43	41	49	50	52	20.4%	—
Slight	174	201	162	162	181	4.0%	—
Total	223	251	220	216	237	6.5%	—
KSI	49	50	58	54	56	15.2%	—
Child KSI	2	2	0	3	0	-100.0%	—
Young Person KSI	9	7	9	16	8	-11.1%	—
Adult Person KSI	22	21	30	22	27	25.0%	—
Older Person KSI	12	17	14	7	18	52.5%	—
Elderly Person KSI	5	3	5	6	3	-34.8%	—
Pedestrian KSI	4	3	5	5	2	-54.5%	—
Cyclist KSI	8	9	11	10	7	-16.7%	—
PTW KSI	18	19	22	18	29	57.6%	—
All Child Casualties	14	13	8	10	12	-15.5%	—
All Cyclist Casualties	24	29	24	30	21	-11.8%	—

Table 17 - Reported road traffic casualties and severity since 2013 - Craven

Source - Data Intelligence, North Yorkshire County Council

Killed or Seriously Injured (KSI) Casualties - Craven

In 2016, the total of 56 KSI casualties in Craven was higher than 2016 (54), 15% above the 2011-15 yearly average (49).

The year saw an increase in the number of PTW riders hurt (from 18 to 29), and an increase of 2 casualties was seen in the goods vehicle groups. Decreases of 4,3,3,1 was seen in the car occupants, pedal cyclists, pedestrians and the other group.

The number of KSI (0) amongst children (0-15 years old) decreased in 2016 compared to the previous year (3).

The increase in KSI's in 2016 against 2015 is showing a flat trend; however, as shown in the graph below, KSI figures have gradually been decreasing since 1990 within Craven, so it is hoped this trend will move back to being downwards in 2017.

Facts about KSI casualties in 2016

- ◆ The number of people killed or seriously injured rose by 4% from 54 to 56 in 2016.
- ◆ The increase in KSI casualties in 2016 is mainly associated with an increase in PTW and goods vehicle (up by 11 and 2 respectively).
- ◆ The number of KSI car occupant, pedestrian, pedal cyclist and other vehicle type casualties decreased in 2016 (by 4, 3, 3 and 1 respectively).
- ◆ PTW KSI casualties are at the highest point since 2006.

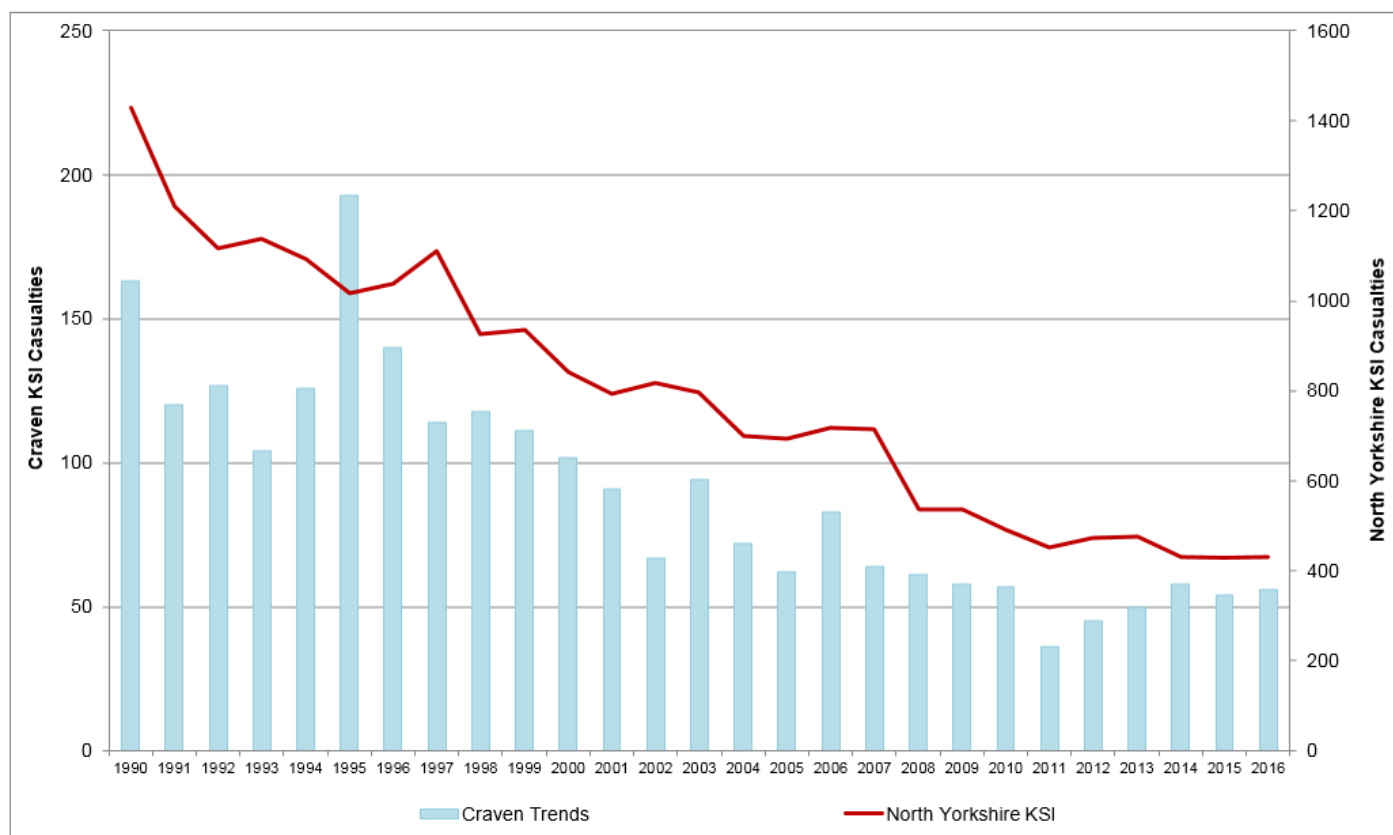


Figure 20 - Reported road traffic KSI casualty trends since 1990 - Craven
Source - Data Intelligence, North Yorkshire County Council

Child Casualties - Craven

The number of children injured increased in 2016 from 10 to 12 compared to the previous year and increased from 8 in 2014. Though is still below the 2011 to 2015 baseline average.

No children were killed or seriously injured in Craven during 2016: all 12 casualties were slightly hurt. However, in 2015 3 children were seriously injured and 7 slightly injured.

This year's overall child casualty numbers show a decrease of 15% against the 2011-15 baseline average and a 10% increase from the previous year. It is important to treat these percentages with some caution as the numbers are very small so changes expressed in percentage terms look large.

The increase in child casualties is mainly associated with the pedestrian casualties up from 2 to 6 and goods vehicles increased from 0 to 1. Reductions were seen in the number of child car occupant, pedal cyclist and other casualties, which all reduced by 1 casualty.

Facts about child casualties in 2016

- ◆ 7 of the children injured were secondary age and 5 were primary age.
- ◆ The child pedestrian collisions involved a child crossing the road failing to look properly.
- ◆ All of the children injured in cars were in collisions where their vehicle was not at fault and none of these collisions happened under similar circumstances.
- ◆ 9 of the 11 collisions involving children occurred on a weekday, 4 of which were at school starting or ending times.
- ◆ 2 collisions happened on a Sunday, and 1 of the collisions occurred during the summer school holidays.
- ◆ The highest ranked causation factors for child collisions in Craven are, pedestrian failed to look properly and pedestrian careless / reckless / in a hurry.

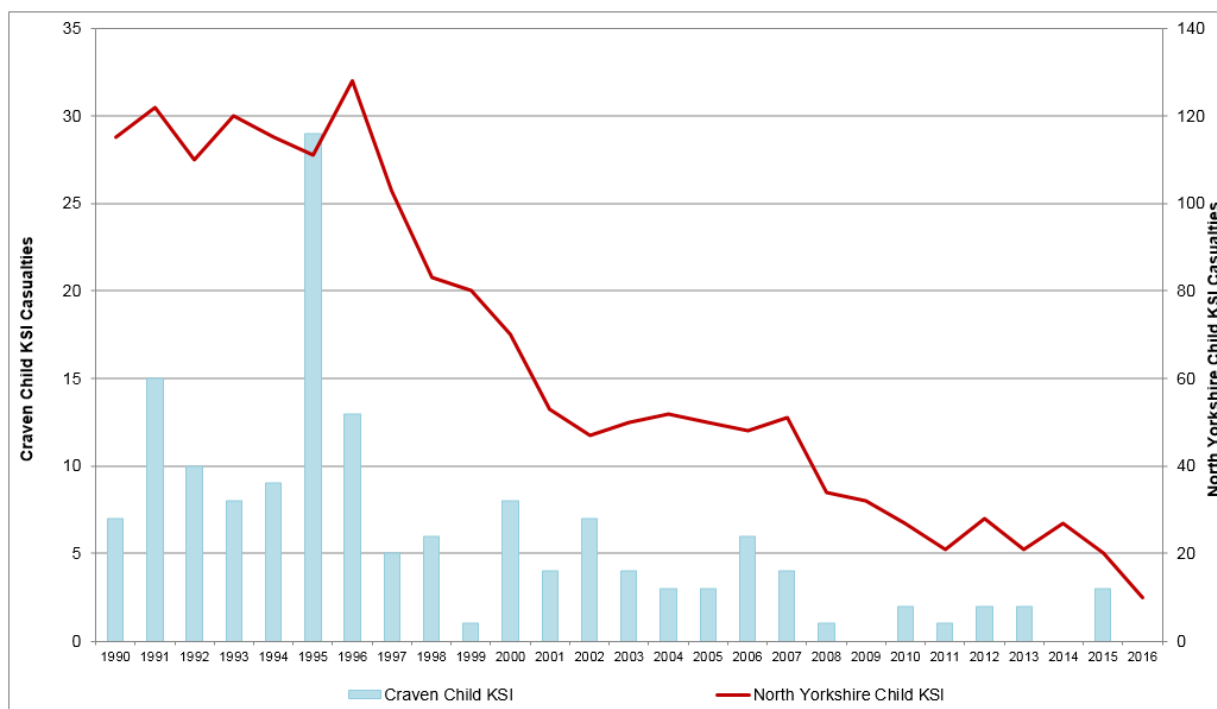


Figure 21 - Reported road traffic KSI child casualty trends since 1990 - Craven
Source - Data Intelligence, North Yorkshire County Council

Road Safety Education and Community Engagement – Craven

Children - Primary School

Some 594 Year 5 and 6 primary school pupils at 31 schools were trained to cycle on the road in the Bikeability cycle training programme over the last year.

This year the new Bikeability Plus training programme was delivered to 54 students at 3 schools in Craven. This scheme extends the existing programme to younger children, teaching basic skills on push and glide bikes.



Image 29 - Reception children at St Stephen's School, Skipton, try out the new Bikeability Plus course

Over 600 Year 6 students from 40 schools attend the Harrogate and Craven Crucial Crew multi-agency safety education event. The children learned road safety facts by taking part in active scenarios and workshop sessions with follow up lesson information provided to their teachers.

The Road Safety and Travel Awareness Officer has supported several local schools and communities concerned about school gate parking issues and provided advice together with our School Gate Parking Resource Pack.

Children - Secondary School

The “Learn and Live” multi-agency new drivers’ presentation was held at 4 secondary schools and colleges across the county, including Craven College, Skipton Girls High School, Settle College and Ermysted’s Grammar. We will be supporting the secondary schools to deliver road safety lessons throughout the curriculum, with the benefit of our own specialist curriculum adviser. A number of High Schools are now using safer cycling resources in Year 7 to encourage pupils to cycle to school and to do so safely. Young Drivers

We worked with the local Road Safety Group to encourage safe behaviours and good driving amongst young drivers and to provide positive role models amongst them. Several car shows were attended by the partnership, events which naturally attach large numbers of young drivers.

Working with Driving Instructors

Reported Road Casualties in North Yorkshire: Annual Report 2016

We continue to work with driving instructors to deliver the EPP training for new drivers and Older Driver refresher drives for more experienced drivers who want to keep up to date and driving confidently and safely. We would welcome more instructors to join the register.

Motorcyclists

Face to face engagement events at popular motorcyclist destinations such as Kirkby Lonsdale, Settle Market Place and Ribbleshead Viaduct have proved a successful means of disseminating campaign messages directly to motorcyclists and an efficient method of targeting large numbers and listening to their concerns and suggestions.

Information packs have been distributed including the updated “Bikers Guide to North Yorkshire”. The route list also includes the A59 from Skipton to east of the A1 and the A65 from Skipton to Ingleton. It recommends further training, appropriate safer riding techniques and behaviours to reduce risk of injury. It is also available online through our website www.roadwise.co.uk .

Image 30 - Motorcycle campaign engagement at Devil’s Bridge, Kirkby Lonsdale

This year after a successful pilot programme, “Biker Down”, first aid and crash scene management courses were delivered across the county. These were courses were fully booked up very quickly and give participants the opportunity to learn life-saving skills, particularly useful in our large rural county. They will be run again next year with Public Health and Police & Crime Commissioner funding and using Fire & Rescue Service First Aid Instructors working with our local Road Safety Officers.



Image 31 - Safe helmet removal session on Biker Down course

Cyclists

We promote safer cycling initiatives throughout the county, especially on the Tour de France, Tour de Yorkshire and other popular routes.

We also distribute cards and fliers to cycle shops, hire centres, guest houses and cafes on cycling routes to get safe cycling messages to cyclists who are riding our long distance routes such as the Way of the Roses. Additionally, “Riding the Routes” advice leaflet for cyclist have been produced and distributed widely.

The Road Safety Team also liaise with organisers of sportives and charity rides, sharing information on cyclist casualties and advice on best riding practice.

Image 32 – New Riding the Routes Advice Leaflet



Temporary roadside information boards have been deployed along route high priority routes, including Beamsley Lane, where there is a history of conflicts and cyclist casualties.

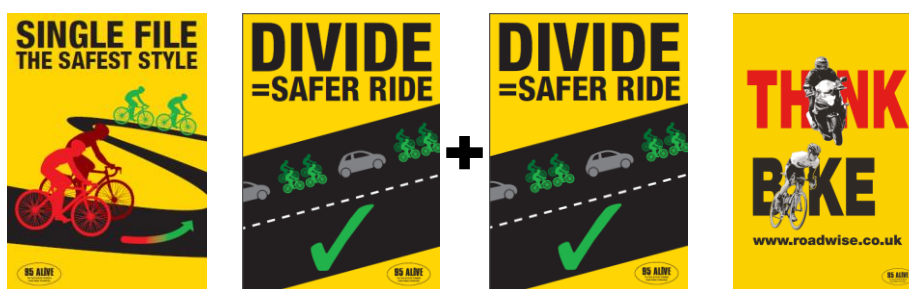


Image 33 - Roadside poster designs currently being trialled on popular cycling routes

Keep Driving Safely and Older Drivers

The Road Safety Team recognises that some older drivers or their relatives question whether they are still fit to drive or not. If the person is of good health but lacks confidence in getting back behind the wheel, especially after a long period not driving, Road Safety offers an assessment drive with a local Approved Driving Instructor to those who need support. Participants are provided with a report showing any areas for improvement.

Evaluation of the assessments shows that they help to boost confidence and encourage drivers to continue driving as long as possible.

Community Engagement/ Local Partnership Working

The Road Safety team contributed to a number of events and initiatives working in partnership with Craven Community Safety Team and the Police Rural and Neighbourhood teams. This year the focus has centred on cyclist, motorcyclist and older driver safety.

During the run up to the Christmas holidays, the Craven Road Safety Task Group held “Don’t Drink and Drive” events in Skipton, Grassington and Settle. This year the engagement events have include a focus on alcohol awareness, in particular it is common for people to underestimate the number of units of alcohol they have consumed and the time taken for alcohol to be processed and removed from the body. In June and July the Team also supported the Police drug and drink drive enforcement campaign with a series of road shows in town centres around the district.



Images 34 and 35 - Don't drink or drug drive banners deployed on the 95 Alive Exhibition Trailer

Speed Management

In 2016, 26 speed concern enquires were assessed. This resulted in 2 requests for speed matrix sign deployment, no requests for engineering measures and 2 requests for Police speed enforcement. The remaining 22 assessments required no further action. At 1 location, participation in the Community Speed Watch scheme was offered.

The police Community Speed Watch scheme is now being offered to communities where a speeding concern has been investigated and there is insufficient grounds for other interventions such as engineering or enforcement. Community Speed Watch enables concerned communities to help themselves to address their concerns through a structured Police led scheme.

Cluster sites

There are 160 cluster sites identified in North Yorkshire compared with a total of 170 the previous year. Of these 160 sites, 17 are located within Craven and details of these are contained on the next page. Of these, 4 are urban (40 mph or lower speed roads) and 13 are rural (over 40 mph limit roads). Of all Craven collisions in 2014-2016, 15% of collisions occurred at cluster sites. 17% of all collisions in Craven in 2016 occurred at cluster sites.

Reported Road Casualties in North Yorkshire: Annual Report 2016

Road Safety Engineering Activities – Craven

Collision cluster site locations

2016/17 NYCC Rank	Location	District	Site Type	Collision Sev. Factor	Cas Sev. Factor	Collisions			Total Collisions 2014- 2016	Total Child Cas	Comments
						2014	2015	2016			
3	A65/A59/A629, Rndbt - Skipton	Cra	rural	14	19	0	5	6	11	0	To be investigated.
9	B6265 Dibbles Bridge - Hebden	Cra	rural	11	11	2	2	1	5	0	Introduction of railings on parapet to prevent entry to river implemented at this site in 2015/16, site to be monitored.
21	A65/A6131 The Bailey, Jnct - Skipton	Cra	rural	8	12	0	5	2	7	0	Recommendations being considered following recent fatal collision investigation
33	A59 Kex Gill Rd by Keg Gill Farm - Blubberhouses	Cra	rural	7	14	3	1	0	4	1	Scheme being considered.
47	A65 145M south of B6480, bend - Clapham	Cra	rural	7	9	2	1	1	4	1	To be investigated.
69	A65 Cleatop 220m South of the Courtyard - Settle	Cra	rural	6	8	1	1	2	4	0	To be investigated.
71	A65/ Sour Ln eastern, Jnct - Thorlby	Cra	rural	6	7	0	0	4	4	1	To be investigated.
95	A65 Nr Woomber Bridge - Gargrave	Cra	rural	5	8	1	0	3	4	1	To be investigated.
101	A629/B6172 Station Rd, Rndbt - Kildwick	Cra	urban	5	7	0	3	1	4	0	To be investigated.
108	A59 /B6160 Bolton Rd, Rndbt - Bolton Bridge	Cra	rural	5	6	2	1	1	4	0	Chevron signs recently installed, to be monitored.
110	A59 / Heslaker Lane, jnct - Skipton	Cra	rural	5	6	2	1	1	4	0	To be investigated.
116	A6068 Main St/Ashville Terrace, Area - Cross Hills	Cra	urban	5	5	1	2	2	5	0	No action necessary after investigation, to be monitored.
128	A65/ Holm Ln By Harden Bridge, Jnct/bend - Austwick	Cra	rural	5	5	2	0	2	4	0	To be investigated.
131	A629 Skipton Rd/Cononley Ln, Jnct - Farnhill	Cra	rural	4	10	0	3	1	4	0	Site will continue to be monitored.
146	A629/A6131 Snaygill Rndbt - Low Bradley	Cra	rural	4	5	0	3	1	4	0	To be investigated.
148	A6069 Broughton Rd/Carleton New Rd by Railway Station - Area, Skipton	Cra	urban	4	4	3	0	1	4	2	To be investigated.
151	A6069 Swadford St/ Keighley Rd/ Caroline Square, Jnct - Skipton	Cra	urban	4	4	1	2	1	4	0	No action necessary after investigation, to be monitored.