

Hambleton District (Area 2)

Hambleton district in brief

- ◆ Four adults were **killed** on Hambleton's roads during 2016 compared to nine adults, in 2015. The 4 fatalities were 3 car occupants, and 1 pedestrian.
- ◆ The number of people **killed or seriously injured (KSI)** was 83 in 2015 and decreased to 69 in 2016. In terms of road user groups, the number of KSI casualties has increased among cyclists (+8), and decreased in all other categories. Amongst car occupants (-12), goods vehicle occupants (-4), pedestrians (-3), the other vehicle type category stayed the same. None of these changes are significant in statistical terms.
- ◆ The total number of **casualties** in road collisions reported to the police in 2016 was 344, a 13% reduction since 2015 (396). There were no increases seen overall in any vehicle category in Hambleton. Decreases were seen in car occupant casualties (-22), other vehicle types (-15), pedestrians (-9%), PTW (-3), goods vehicles (-3). The number of pedal cyclist casualties stayed the same between the two years at 27 casualties.
- ◆ **2 children** were seriously injured in 2016, which is lower than 2015 and lower than the baseline average of 3, but is not a statistically significant decrease. The children injured were both car occupants injured in different collisions.
- ◆ The number of **cyclist** casualties has stayed the same at 27 in 2016 and none were children.
- ◆ **Pedestrian** casualties decreased by 39% from 23 in 2015 to 14 in 2016. This decrease was also seen in the number of killed or seriously injured pedestrian casualties, although the decrease is not statistically significant. There was 1 pedestrian fatality in Hambleton in 2016, which is the first pedestrian fatality in this district since 2013.
- ◆ The number of **powered two wheeler (PTW)** casualties has decreased by 9% from 35 in 2015 to 32 in 2016.
- ◆ A total of 224 **road collisions** that resulted in someone being injured were reported to the police in 2016, 11% less than in 2014 (252). This is an average of 19 collisions per month or 5 per week in Hambleton.

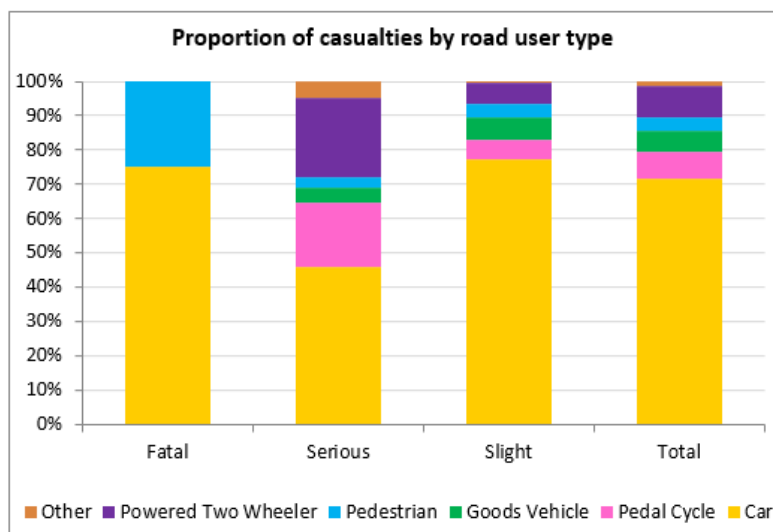


Figure 10 - Proportion of all casualties by road user type in 2016 - Hambleton
Source - Data Intelligence, North Yorkshire County Council

All Casualties - Hambleton

The number of road casualties reported to the Police in Hambleton has reduced in 2016 to the second lowest point seen since modern records began in 1990.

The trend observed from the number of casualties injured in Hambleton is overall downwards but there does appear to be a high year followed by a couple of lower years. If this trend continues 2017 will be another lower year for casualties in Hambleton district.

The total number of did not increases in any vehicle category in Hambleton. Decreases were seen in car occupant casualties (-22), other vehicle types (-15), pedestrians (-9%), PTW (-3) and goods vehicles (-3). The number of pedal cyclist casualties stayed the same between the two years at 27 casualties.

The number of casualties on Highways England roads within the district fell by 33% in 2016, from 85 to 57.

The district saw an overall decrease in road casualties of 10% from the baseline, which is better than the 2.5% reduction in the number of casualties recorded in North Yorkshire overall.

Facts about all casualties in 2016

- ◆ There were 224 collisions leading to casualties in 2016, down 28; resulting in a 13% number of casualties compared to 2015.
- ◆ Car occupants make up the largest proportion of road casualties (72%); followed by PTW (9%), pedal cyclists (8%); goods vehicles (6%), pedestrians (4%) and other vehicle types are 1% of the total.
- ◆ The number of casualties recorded in 2016, is 10% below the 2011-15 district average.
- ◆ The number of children injured (14) which represent 4% of all casualties in 2016; is a lower proportion than the 7% in 2015.
- ◆ Cyclist casualties stayed the same at 27 in 2016 which is now 8% above the 2011-15 average (25).
- ◆ There was an average of 19 collisions per month or 5 per week in which someone was hurt.

Hambleton	Baseline (Avg 11-15)	2013	2014	2015	2016	2016 vs baseline	Statistically significant change
Fatal	8	5	7	9	4	-48.7%	—
Serious	70	57	60	74	65	-7.7%	—
Slight	306	271	329	313	275	-10.0%	—
Total	384	333	396	396	344	-10.4%	—
KSI	78	62	67	83	69	-11.8%	—
Child KSI	3	0	0	7	2	-28.6%	—
Young Person KSI	16	16	10	15	17	9.0%	—
Adult Person KSI	31	25	27	33	24	-22.1%	—
Older Person KSI	22	19	26	16	19	-14.4%	—
Elderly Person KSI	7	2	4	12	7	2.9%	—
Pedestrian KSI	5	4	2	6	3	-44.4%	—
Cyclist KSI	9	7	12	4	12	30.4%	—
PTW KSI	16	15	16	18	15	-3.8%	—
All Child Casualties	29	18	33	36	16	-45.6%	—
All Cyclist Casualties	25	19	30	27	27	7.1%	—

Table 14 - Reported road traffic casualties and severity since 2013 - Hambleton
Source - Data Intelligence, North Yorkshire County Council

Killed or Seriously Injured (KSI) Casualties - Hambleton

In 2015, with a total 69 KSI casualties, Hambleton has recorded a total that is 11.5% below the 2011-15 average (78).

The year saw an increase in the number of pedal cyclist KSI casualties which has risen by 8 since the previous year. With a total of 12 KSI cyclist collisions, this amount is 4 above the baseline average of 9.

The number of KSI (2) amongst children (0-15 years old) has decreased from 7 in 2015.

The decrease in KSI in 2016 against 2015 is encouraging; however, as shown in the graph below, KSI figures have followed a long term reducing trend.

Facts about KSI casualties in 2016

- ◆ The number of people killed or seriously injured decreased by 17% to 69 in 2016, from 83 in 2015.
- ◆ The three most vulnerable road user groups (Pedestrian, Cyclist and PTW riders) between them account for 43% of all KSI casualties.
- ◆ The decrease in KSI casualties in 2016 is mainly associated with a decrease in car occupants (-12), goods vehicles (-4), pedestrian and PTW (-3 each) and other vehicle types stayed the same with 3 each year. An increase was seen in the pedal cyclists group (+8).
- ◆ The three other vehicle type KSI casualties recorded in 2016 were 2 horse rider's injured in separate collisions and a mobility scooter rider.

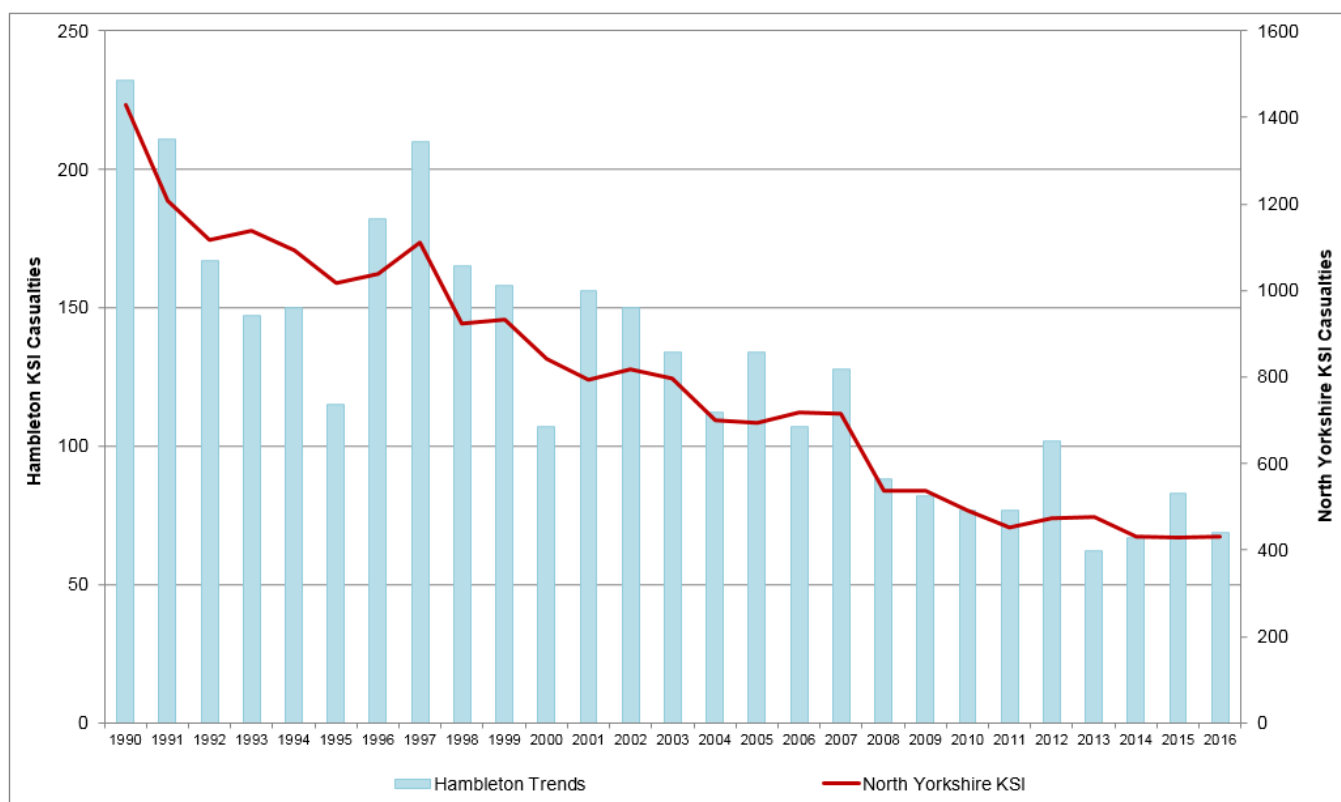


Figure 11 - Reported road traffic KSI casualty trends since 1990 - Hambleton
Source - Data Intelligence, North Yorkshire County Council

Child Casualties – Hambleton

In 2016 there were 16 children injured within the Hambleton district. This is the lowest number since modern records began in 1990 but is not a statistically significant change beyond normal fluctuations compared to the 2011-15 baseline average of 29.

The total number of child KSI casualties (2) recorded in 2016 is 5 above the previous year. Both the collision resulting in seriously injured children in the district were linked to “travelling too fast for conditions”.

This year’s overall child casualty numbers show a decrease of 45% against the 2011-15 baseline average, with a 56% decrease since the previous year i.e. from 36 to 16.

The decrease in child casualties is mainly associated with a decrease in child car occupant casualties from 23 to 15, though child pedal cyclists also decreased from 7 to 0 and child pedestrian casualties from 6 to 1. No child casualty groups saw an increase in 2016.

Facts about child casualties in 2016

- ◆ 4 of the 16 children injured were secondary school age, 10 was primary age and 2 were pre-school age.
- ◆ In the collisions involving a child the most used causation factor is “driver failed to look properly”. Second most common is “driver travelling too fast for conditions”.
- ◆ In the collision involving a child pedestrian casualty, another vehicle was at fault.
- ◆ Of the 16 collisions, 12 were the fault of the vehicle that was carrying the child casualties.
- ◆ The majority of collisions involving children occurred on a Saturday (3/12) or a Sunday (3/12), 6 were on a weekday and none of the collisions were on a school journey and none were during the school holidays.

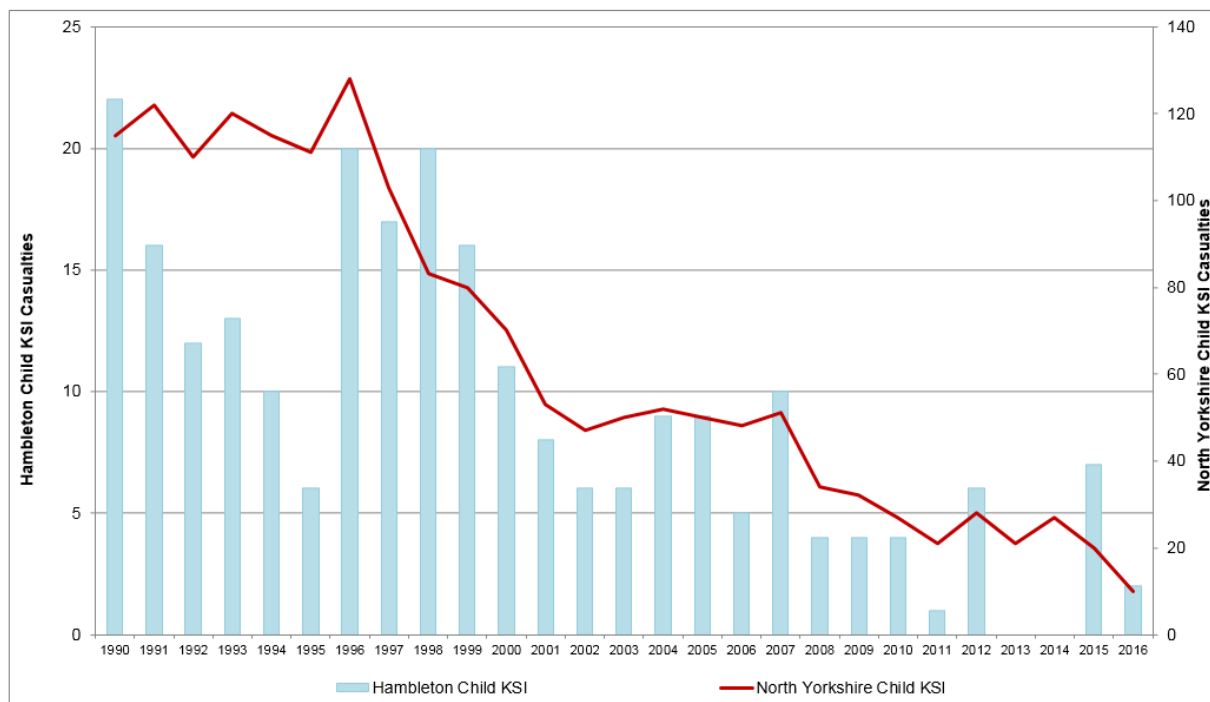


Figure 12 - Reported road traffic KSI child casualty trends since 1990 - Hambleton
Source - Data Intelligence, North Yorkshire County Council

Road Safety Education and Community Engagement - Hambleton

Children – Pre & Primary School Education

Road safety talks were delivered to 4 pre-schools in the District. These pre-schools are attached to larger primary schools and this early intervention is part of a planned programme of continued road safety education throughout the child's school life.

The Curriculum Resource pack continues to be used in both Primary and Secondary Schools. This resource is continually updated by our specialist road safety curriculum adviser who is also available to help teachers to develop this throughout the curriculum and to encompass local issues and features.

Approximately 2000 children from 80 schools across Hambleton and Richmondshire attended the Crucial Crew multi-agency safety event where they received advice on wearing seatbelts and appropriate behaviour in the car.

Several schools participated in the Junior Road Safety Officer scheme whereby a small team of 9/10 year olds help deliver road safety messages in their schools via competitions, notice boards and assemblies. The Road Safety Team encouraged schools to participate in various national events including Walk to School Week, Bike Week, National and the UN Road Safety Week.

In October Be Bright Be Seen messages were delivered across Hambleton via school assemblies and radio and poster campaigns. Pedestrian Safety sessions were delivered to several schools across the district using Spike the Hedgehog as an engagement tool.

Image 13 – Spike the hedgehog engaging with children at Huby Primary School



Children - Secondary School Education

The Drive Alive event that addresses young/potential drivers and passengers risks and responsibilities was delivered to Northallerton College. Throughout the day students received presentations from North Yorkshire Police, North Yorkshire Fire & Rescue, a NYCC First Aid trainer and members of the Road Safety team. The event was opened with a talk from the victim of a hit and run accident and finished with a closing presentation from bereaved parents who lost their teenage son in a car accident some years ago. Separate young driver/passenger presentations were delivered to students at Bedale and Easingwold schools.

Image 14 - Driving Simulator in use at Northallerton College



Reported Road Casualties in North Yorkshire: Annual Report 2016

All year 7 pupils at Northallerton School received a presentation on In-car safety. The annual road safety discussion morning was held with a group of disaffected teenagers from Stokesley School, the focus being pedestrian safety and passenger power. The Road Safety Officer attended Stokesley Schools safety “focus day” and presented to the students on in-car safety.

Young People

The Enhanced Pass Plus programme continues to be promoted to young, novice drivers in the district. Specially trained driving instructors have been recruited, who have learned additional coaching skills from the Road Safety Team. The Enhanced Pass Plus programme includes a number of practical driving lessons to experience motorways, city driving and other more advanced challenges whilst accompanied by an experienced driving instructor. The Road Safety Officer then leads a further (compulsory) workshop session in which new drivers analyse crashes, explore attitudes, perceptions and risky behaviours in themselves, their passengers and peer groups and learn how to recognise and deal with potentially risky situations. This initiative is supported by the Performance Reward Grant funding and partly by the young drivers themselves. 4 evening workshops were held during the period at which 23 young drivers attended from across Hambleton and Richmondshire. Approved Driving Instructors have been trained up to help promote the initiative.

Working with Driving Instructors

We continue to work with driving instructors to deliver the EPP training for new drivers and Older Driver refresher drives for more experienced drivers who want to keep up to date and driving confidently and safely. We would welcome more instructors to join the register.

Motorcyclists

We continue to work with motorcyclists to reduce casualties and address local concerns. Face to face engagement at popular motorcyclist destinations across Hambleton and Richmondshire such as Penny Garth Café in Hawes, Manor Café at Bellerby and Helmsley Market Place for bikers using the B1257 have proved successful means of disseminating campaign messages directly to motorcyclists.

We provide advice on safer responsible riding and promote post-test Rider Development Courses. In particular we distribute information packs including our “Bikers Guide to North Yorkshire” booklet that recommends appropriate safer riding techniques and behaviour to reduce risk of injury.

We continue to use online videos highlighting the hazards along two of the local high risk routes (the B1222 and B1257). Along with advice on the www.roadwise.gov.uk website, the “NYrides” videos use social media such as YouTube and FaceBook, to raise awareness of hazards and consequences of risky behaviour.

We liaise with North Yorkshire Police Traffic Officers to maximise their enforcement activities and to promote Bikesafe, the police led rider assessment programme

Image 15 - Motorcyclists at RAF Leeming after successful completion of a BikeSafe course



We have promoted the “Think Bike” and “Turning (check your mirrors) campaigns with billboards, banners and promotional car stickers.

Reported Road Casualties in North Yorkshire: Annual Report 2016

The Biker Down initiative was trialled across the County including courses at Northallerton and Richmond Fire Stations. Each session is 3 hours and covers scene management, first aid and conspicuity. Feedback from all attendees was very positive and more courses will be held this coming winter/spring.

Cyclists

Some 660 Year 5 and 6 primary school pupils benefitted from participation in the Bikeability cycle training programme over the last year. Cycling awareness sessions have been held for children too young to attend Bikeability training. Cycle awareness sessions have been delivered at Mowbray special school and it is hoped that a group of the more able students will do the full two day course later in the summer from which a course may be developed especially for special schools elsewhere in the County. Information and advice to promote and encourage cycling for commuting and leisure has been provided at summer events in the district. A number of Tour de Yorkshire events have been organised involving cycle skills and road awareness sessions for families. RAF Linton on Ouse are to host an NYCC cycle awareness session for MOD families focussing on bike control, hazard perception and junction work.

Image 16 – A Bikeability Training at Mowbray School



Older People

Four older driver presentations were delivered in Stokesley, Bedale, Thirsk and Northallerton. The talks focussed on keeping drivers up to date on changes to the Highway Code, traffic law, driving styles and road layouts.

The road safety team have organised a number of “refresher drives” to drivers over 50 to provide them with driving tips, techniques and advice. 55 drivers across Hambleton attended in total.

Image 17 - Hambleton Area Road Safety Officer at Easingwold market place Engagement Event



Driving at Work

A number of initiatives have been held across Hambleton and Richmondshire including Safe Driving for Work presentations (5 at Broadacres Housing Association), training for vehicle safety checks, trailer, minibus and HGV training, practical driver training and driving risk management training.

Community Engagement/Local partnership working.

The Road Safety Officer contributed to a number of events and initiatives with the MOD. RAF Leeming held its annual Road Safety week which consisted of driving assessments, presentations and banners and poster displays throughout the base. Similar events were held at RAF Linton on Ouse and Alanbrooke Barracks.

Road Safety evenings were held with Cubs and brownie packs across the area. Winter driving and winter and summer drink drive campaigns were held across all the market towns. Drivers were given information on winter driving techniques, basic car maintenance and the effects of alcohol while driving and how to manage their alcohol intake.

The Road Safety Officer hosted an area at the NY Show and was accompanied by NY Police, NYF&RS and Yorkshire Ambulance Service and a number of public engagements were held involving partners with the addition of the IAM. In particular the Road Safety officer worked closely with NYF&RS during the Fire Brigades national RS week where events were held each day of the week.

The Road Safety Officer delivered a series of radio messages together on the importance of appropriate speed, avoiding distractions and correct seatbelt use. Anti-drink/drive talks were given to offenders by the Probation service with information and resources provided by the Road Safety Officer.

Image 18 - Display Unit in use at RAF Linton-on-Ouse

Speed Management

There have been 51 speed management requests in the Hambleton District, of which 25 surveys were carried out which resulted in 5 police enforcements and 3 matrix deployments. 20 resulted in no further action and 23 are still in process.

Cluster sites

There are 160 cluster sites identified in North Yorkshire compared with a total of 170 the previous year. Of these 160 sites, 14 are located within Hambleton and details of these are contained on the next page. Of these, 5 are urban (40 mph or lower speed roads) and 9 are rural (over 40 mph limit roads). Of all Hambleton collisions 2014-2016, 9% occurred at cluster site. 9% of all collisions in Hambleton in 2016 occurred at cluster sites.



Reported Road Casualties in North Yorkshire: Annual Report 2016

Road Safety Engineering Activities – Hambleton

Collision cluster site locations

2016/17 NYCC Rank	Location	District	Site Type	Collision Sev. Factor	Cas Sev. Factor	Collisions			Total Collisions 2014-2016	Total Child Cas	Comments
						2014	2015	2016			
5	A170 Sutton Bank - Sutton-Under-Whitestonecliffe	Ham	rural	13	22	3	3	4	10	6	Site will continue to be monitored.
57	A1(M) 225m north of Leeming Railway Bridge - Leeming Bar	Ham	rural	6	14	2	1	1	4	2	Highways England has been notified about this site's inclusion in the North Yorkshire annual report. This site will be being monitored as part of opening of A1 Leeming to Barton major project.
59	A19 / C5 Jct - Knayton	Ham	rural	6	12	2	1	1	4	0	Highways England has been notified about this site's inclusion in the North Yorkshire annual report.
66	A170 Sutton Rd / Moor Lane jct - Bagby	Ham	rural	6	9	1	3	1	5	0	Site of recent scheme to improve signage. No further action, to be monitored.
77	A19 Jct W/ A172 Stokesley Rd nr Tontine	Ham	rural	6	7	2	0	2	4	0	Highways England has been notified about this site's inclusion in the North Yorkshire annual report
89	A684 / Featherbed Lane Jct - Ellerbeck	Ham	rural	5	11	1	1	2	4	0	To be investigated.
91	A684 Warlaby Crossrd, Northallerton	Ham	rural	5	10	1	2	1	4	0	Signage improvements carried out in 2016/17, no further action unless significant funding becomes available. To be monitored.
96	A19 / Hutton Rae Lane Jct - Nr Hutton Sessay	Ham	rural	5	8	3	1	1	5	0	Signage improvements carried out in 2016/17. To be monitored.
104	A167 Boroughbridge Lane outside County Hall - Northallerton	Ham	urban	5	6	2	2	1	5	0	No pattern to address, to be monitored.
109	A19 / Nr to Jct to A168 - South Kilvington	Ham	rural	5	6	3	0	1	4	0	Highways England has been notified about this site's inclusion in the North Yorkshire annual report.
123	A684 Stokesley Rd / Northallerton Rd, Rndbt - Northallerton	Ham	urban	5	5	1	1	3	5	0	To monitor following North Northallerton Development.
144	A168 Thirsk Rd/Mill Hill Ln/ Racecourse Ln, Jncts - Northallerton	Ham	urban	4	5	2	1	1	4	0	Recent scheme to be monitored.
150	B1333 High St / Romanby Rd, Jct - Northallerton	Ham	urban	4	4	0	3	1	4	1	Recent signal timing changes made, to be monitored.
155	High Street/Friarage St/A684 Brompton Rd, Rndbt - Northallerton	Ham	urban	4	4	2	1	1	4	0	No further action, to be monitored.