

## Scarborough District (Area 3)

### Scarborough district in brief

- ◆ One child was **killed** on Scarborough's roads during 2016 compared to three adults killed, in 2015. The child fatality was a pedestrian.
- ◆ The number of people **killed or seriously injured (KSI)** was 41 in 2016, a decreased from 42 in 2015. In terms of road user groups, the number of KSI casualties decreased, mostly amongst car occupants (-11) and other road users by (-1), however they increased amongst PTW (+5) goods vehicles (+2), and pedestrians (+2).
- ◆ The number of **total casualties** in road collisions reported to the police in 2016 was 288, down 17% on 2015 (348); this decrease was seen amongst car occupants (-59), pedal cyclists (-4), other vehicle types (-3) and PTW (-2). Whereas increases were seen in the number of goods vehicles (+5) and pedestrians (+3).
- ◆ The reported number of **child KSI casualties** (aged 0-15) in the district in 2016, 2, is one lower than the number in 2015, 1. This year both of the killed or seriously injured children were pedestrians; last year all 3 of the children seriously injured were pedestrians. This decrease represents normal random fluctuations that are not significant in statistical terms.
- ◆ The total number of **cyclist** casualties has reduced to 24 in 2016 from 28 in 2015; though the number of KSI cyclists stayed the same at 5 in both 2016 and 2015.
- ◆ **Pedestrian** casualties rose by 7% from 42 in 2015 to 45 in 2016; KSI pedestrian casualties also rose from 9 in 2015 to 11 in 2016.
- ◆ The number of **powered two wheeler (PTW)** casualties has decreased by 5% to 37 in 2016 from 39 in 2015. Though an increase was seen amongst PTW KSI (15) which is 50% more than the total (10) recorded the previous year
- ◆ A total of 216 **road collisions** that resulted in someone being injured were reported to the police in 2016, 8% less than in 2015 (247). This total works out at an average of 18 collisions per month or 5 per week.

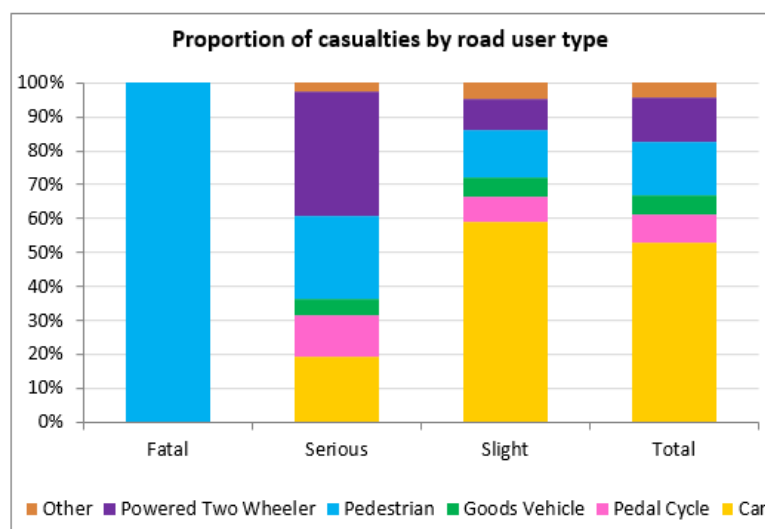


Figure 13 - Proportion of all casualties by road user type in 2016 - Scarborough  
Source - Data Intelligence, North Yorkshire County Council

## All Casualties - Scarborough

The overall trend in road casualties reported to the Police in Scarborough continues the overall downward trend, though 2016 is still higher than the lowest point which was reached in 2013.

In 2016, the district has recorded 60 less casualties compared to the previous year. The decrease is mainly seen in the lower number of car occupant young person casualties (from 60 in 2015 to 37 in 2016) and older person car occupant casualties (from 61 in 2015 to 37 in 2015). This is the opposite of the rises seen last year in Scarborough.

During 2016, Scarborough district saw a significant reduction in the number of casualties from alcohol related collisions, reducing by 71% from the 2011-2015 baseline average. This reduction appears to be mostly due to a reduction in the number of alcohol impaired pedestrian casualties. Further information on this reduction can be viewed on page 29 of the full report – Reported road collisions involving alcohol.

The district performance (-10%) is better than the reduction in the total number of casualties recorded in North Yorkshire as a whole (down by 2.5% compared to the baseline average).

### **Facts about all casualties in 2016**

- ◆ There were 288 casualties in 2016, 60 less than in 2015 (a 17% increase).
- ◆ Car occupants make up the largest proportion of road casualties (53%); followed by pedestrians (16%), PTW (13%), pedal cycle (8%), goods vehicles (3%) and other (5%).
- ◆ The number of casualties recorded in 2016, is 10% below the 2011-15 average.
- ◆ The total number of children injured 24 which represent 8% of all casualties in 2016; was 21 below 2015.
- ◆ Cyclist casualties have reduced by 2 in the district, although the 2016 total (24) is 12% below the 2011-15 average (27).

Scarborough	Baseline (Avg 11-15)	2013	2014	2015	2016	2016 vs baseline	Statistically significant change
Fatal	3.20	8	2	3	1	-68.8%	—
Serious	52.20	51	40	42	41	-21.5%	—
Slight	263.20	234	249	303	246	-6.5%	—
Total	318.60	293	291	348	288	-9.6%	—
KSI	55.40	59	42	45	42	-24.2%	—
Child KSI	4.60	5	5	3	2	-56.5%	—
Young Person KSI	13.40	15	14	12	5	-62.7%	—
Adult Person KSI	17.60	23	10	12	18	2.3%	—
Older Person KSI	14.60	13	7	12	12	-17.8%	—
Elderly Person KSI	5.20	3	6	6	5	-3.8%	—
Pedestrian KSI	9.60	9	7	9	11	14.6%	—
Cyclist KSI	5.00	4	8	5	5	0.0%	—
PTW KSI	15.20	15	16	10	15	-1.3%	—
All Child Casualties	30.80	21	28	45	24	-22.1%	—
All Cyclist Casualties	27.20	26	28	28	24	-11.8%	—

Table 15 - Reported road traffic casualties and severity since 2013 - Scarborough

Source - Data Intelligence, North Yorkshire County Council

## Killed or Seriously Injured (KSI) Casualties - Scarborough

In 2016, with a total 42 KSI casualties in Scarborough the total was 24% below the 2011-15 average (55).

The year saw a decrease in the overall number of KSI casualties due to a decrease of 11 in the car occupant group. However the PTW (+5), goods vehicles (+2) and pedestrians (-2) increased.

The number of KSI (2) amongst children (0-15 years old) has reduced by 1 from the previous year. In 2016 all child KSIs were pedestrians the same as in 2014 and 2015.

The decrease in KSI in 2016 returns this number to the lowest on record for Scarborough, but does not show a statistically significant change between the years.

### **Facts about KSI casualties in 2016**

- ◆ The number of people killed or seriously injured fell 24% to 42 in 2016 from the baseline.
- ◆ The three most vulnerable road user groups (Pedestrian, Cyclist and PTW riders), between them, account for 74% of all KSI casualties.
- ◆ The decrease in KSI casualties in 2016 is mainly associated with a decrease in car occupants (down by 11).
- ◆ The district performed slightly worse for the PTW (+5), goods vehicles (+2) and pedestrians (+2).
- ◆ Cyclist KSI casualties have stayed the same at 5 in 2016, however none of these casualties were young people in 2016 compared to 3 in 2015.
- ◆ The other type KSI casualty that was recorded in 2016 was an elderly mobility scooter rider.

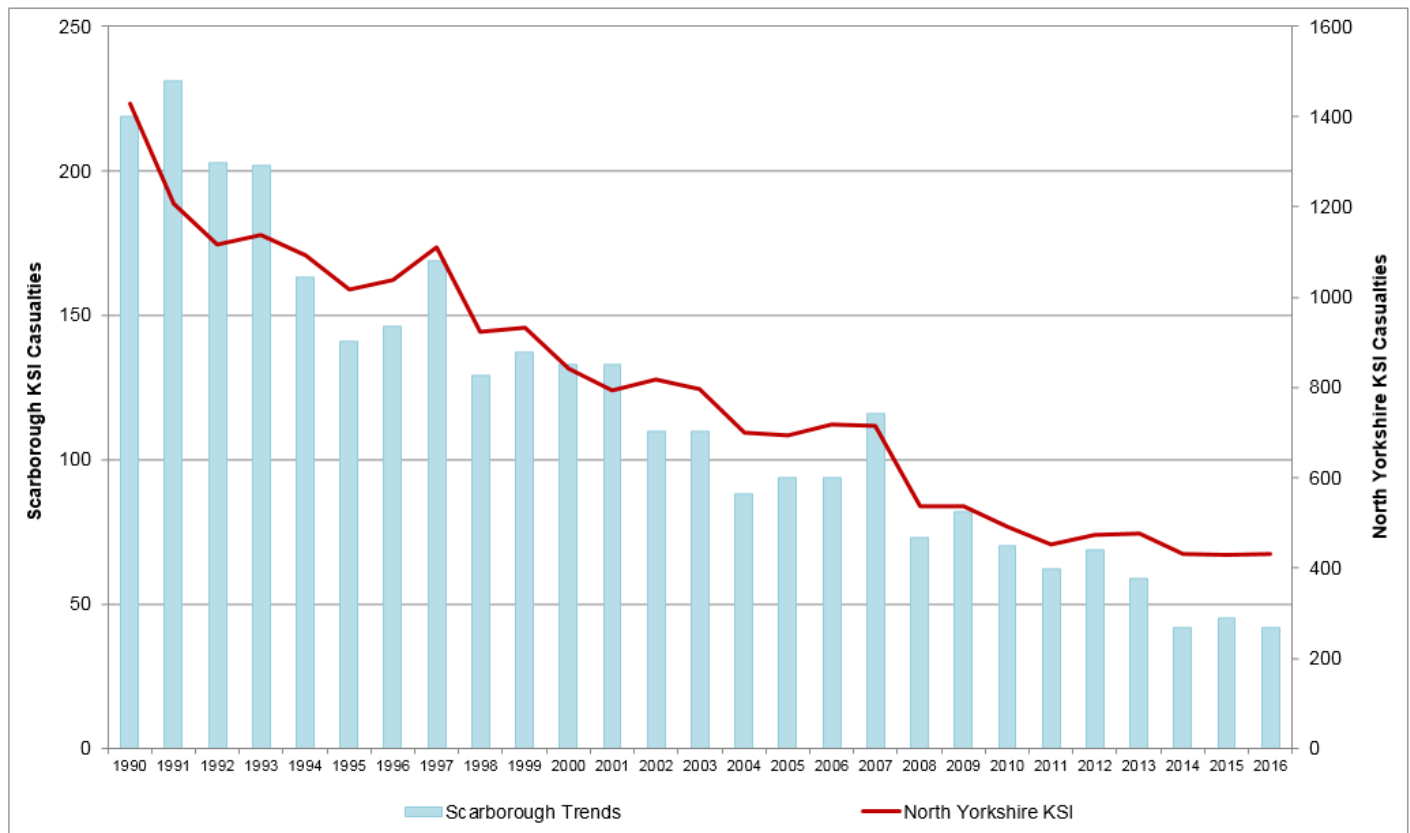


Figure 14 - Reported road traffic KSI casualty trends since 1990 - Scarborough  
Source - Data Intelligence, North Yorkshire County Council

## Child Casualties - Scarborough

The number of children injured in the district decreased from 45 in 2015 to 24 in 2016 (-21). This returns the district to the second lowest year on record for the number of children injured in road traffic collisions.

The number of KSI (2) amongst children (0-15 years old) has reduced by 1 from the previous year. In 2016 all child KSIs were pedestrians the same as in 2014 and 2015.

This year's overall child casualty numbers show a decrease of 22% against the 2011-15 baseline average, but with an 88% decrease against the previous year.

The decrease in child casualties is mainly associated with an decrease in the number of pedal cyclist casualties from 8 to 0 and pedestrian casualties from 18 to 11, though child other vehicle type casualties also increased from 4 to 0 and child car occupants decreased from 15 to 11.

### **Facts about child casualties in 2016**

- ◆ 12 of the children injured were primary school aged, 11 were secondary aged and 1 was pre-school age.
- ◆ In the child collisions the three most reported causation factors are failure to look properly by a vehicle driver, then failure to look properly by a pedestrian then pedestrian crossed a road masked by a stationary or parked vehicle.
- ◆ The 11 pedestrian child casualties were recorded as 1 driver at fault and 10 pedestrians at fault.
- ◆ In the child car occupant collisions 6 of the 11 children injured, were occupants in the car that was at fault, in 1 case both vehicles were at fault and in 4 cases, the child was in a not at fault vehicle.
- ◆ The majority of collisions involving children occurred on a weekday (18 of 23) and a significant proportion of these were during the afternoon school run time (9 of 23), 6 of these 9 children were secondary aged pedestrians.

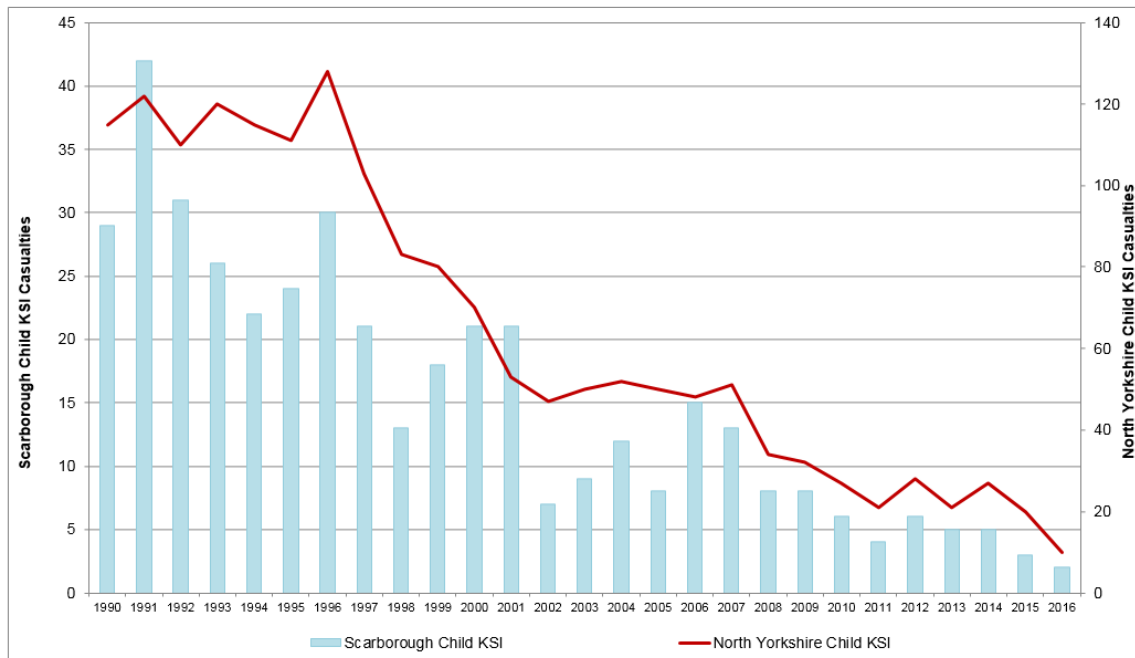


Figure 15 - Reported road traffic KSI child casualty trends since 1990 - Scarborough  
Source - Data Intelligence, North Yorkshire County Council

## Road Safety Education and Community Engagement – Scarborough

### Children - Primary Schools

The Road Safety team joined the Scarborough's Community Impact team to deliver workshops showing children of Friarage School how to be respectful of each other, their community and also themselves. The Workshops highlighted and tackled anti – social issues that were raised by the pupils of Friarage School and the local residents.

There are great concerns about school gate parking causing obstructions to other road users and pedestrians, especially the pupils. People commuting in this area felt forced to take risks when trying to cross the road. It was reported also that children were not looking when crossing the road and older children were taking risks with the traffic.

Road Safety's intervention addressed these issues through delivering two bespoke workshops that were fitting for their age group and environment.

**Key Stage 1**– These children were encouraged to participate in pedestrian training. Issues were raised about crossing the road and the subjects discussed were 'Bright be Seen', safer places to cross and how to do the 'Green Cross Code'. The children were encouraged to use safer practices and left with an understanding on how to be safe near and on the roads.

**Key Stage 2.** This workshop delivered by Road Safety team concentrated on travelling to and from school. As the Year 6s are in their transition year, they may suddenly find themselves independently travelling to their new senior school. This workshop is aimed to find coping strategies for their journey and how to be empowered and prepared to cope with issues that may happen on their travels.

### Bikeability

Bikeability is still being successfully delivered to year 5s and 6s in 45 primary schools Along the East Coast. A total of 914 pupils this year participated in this programme. This course not only teaches children how to cycle on the road safely, but it improves many other skills too: observation, co-ordination, healthier life style choices, confidence building and independent travel. The Children had the opportunity to learn safer road practices on their local roads and were able to use these skills while cycling under supervision and alongside other road users.

### Bikeability Balance

'Bikeability Balance' has completed its second successful year. The course was delivered to 70 reception children in Scarborough, Whitby and Ryedale area. All the children regardless of the level of development were able to participate in this activity. The children learnt how to balance on a 2 wheeler bike, which in affect help improve their co-ordination, observation skills and building up their confidence. Once the children had grasped the balance bike, their next step is to master a bicycle with - no stabilizers.

Image 19 - Bikeability Balance at East Ayton Primary School



## Crucial Crew

Crucial Crew has celebrated its 25<sup>th</sup> year of delivering safety messages to the year 6 children of Scarborough and Ryedale districts. The Road Safety team are proud to be part of this event and continue to deliver an 'in-car safety talk' with a demonstration showing the importance of why all car occupancies must wear their seatbelt and how they can help reduce risk and distractions while the car is in motion. This workshop is aimed to make children feel empowered to speak out if they did not feel safe on a journey. 1500 children attended Crucial Crew this year.

## Further Education

**Drive Alive** was delivered to Caedmon Community College, Pindar School and Askham Bryan, Scarborough Campus. 95 Alive partnership and guest speakers addressed different issues that could affect young drivers and their peers as they move into adulthood. These thought provoking presentations are designed to make young people think about their choices they make while traveling in vehicles and their personal responsibilities to their co-travellers and other road users too.

**Actions Have Consequences** is a new presentation that is being piloted in Scarborough. Two sessions have already been delivered to Yorkshire Coast College and the Police Cadets. Though an emotional experience, this one hour presentation with live speakers and a short film, was well received. The speakers reflected on their own reactions and feelings while dealing with road traffic collisions and how it still affects them even today. The audience are encouraged to ask those questions no one ever likes to ask or hear. A heart felt presentation that young people get to see the human side of our emergency service workers.

Image 20 - Partners at Actions Have Consequences event



## Young Drivers

This year, two successful 'Enhanced Pass Plus' courses were delivered to Scarborough, Whitby and Ryedale newly qualified drivers. Road safety are aware that new drivers lack of experience once they are find themselves driving solo. The EPP course teaches new drivers how to recognise hazards and learn how to avoid potential dangers. The course delivers both practical and theory sessions to provide new drivers with coping strategies to handle peer pressure, how to avoid unnecessary stress and a better understanding of the continuous changes in road conditions. New drivers completing this course feel more confident on the road and able to manage their driving better once completed this course.

## Cyclists

The Road Safety team were fortunate to participate in welcoming the Tour De Yorkshire competitors over the finish line on day one of the tour. As cycling is becoming a popular activity for all of the family, Road Safety are delivering initiatives to increase awareness of cyclists. At local events both Road Safety and Fire and Rescue, encourage people to get on their bikes and give advice on safer cycling and promote safer cycling initiatives. The 'Cycle Yorkshire, Ride the Routes' is an app with useful information for riders around North Yorkshire.



Left: Image 21 - Tour de Yorkshire at Marine Drive

Right: Image 22 - Whitby Cycle Festival



## **Motorcyclists**

Road Safety and Fire and Rescue attended two of the big motorcyclists events held on Oliver's Mount in Scarborough. The team engaged with the bikers giving advice and listening to their concerns. The Biker's received an information pack with our 'Bikers Guide to North Yorkshire' which offers safety techniques around local roads. Bikers are also offered the opportunity to attend a "Biker Down" course in their area. This course gives practical First Aid training and advice on what to do at a scene of an accident.

The Road Safety Officer and Community Safety Officer also engage regularly with Motorcyclists at the Whistle Stop Café in Whitby and on the Marine Drive in Scarborough.

Image 23 - Motorcycle Park at Oliver's Mount Races



## **Community Engagement/ Local Partnership Working**

Alongside other agencies, Road safety joined in a number of public events in Scarborough and Whitby. Advice on a variety road safety subjects were delivered to the public at these local events.

- Whitby Regatta, Safer Cycling.
- Scarborough's town centre, Christmas Drink Drive campaign was launched
- Summer Don't Drink and Drive campaigns were delivered at local shows. Egton and Burniston in both Scarborough and Whitby.
- Local cycle events held in the district also hosted the Road safety team giving information and advice about safer cycling.
- Family days at GCHQ, Totally Socially, Scarborough Castle, Eastside Community Centre, Whitby and 'In the Know', Eastfield welcomed the Road Safety team.

## **Keep Driving Safely and Older Drivers**

The Road Safety Team recognises that some older drivers or their relatives question whether they are still fit to drive or not. If the person is of good health but lacks confidence in getting back behind the wheel, especially after a long period not driving, Road Safety offers an assessment drive with a local Approved Driving Instructor to those who need support. Participants are provided with a report of any areas for improvement.

Evaluation of the assessments shows that they help to boost confidence and encourage drivers to continue driving as long as possible,

Two Older driver's presentations were delivered in Scarborough. The Road Safety Officer and Community Safety Officer attended other events to reach 50+ drivers. Five coffee mornings, including the Alzheimer's society meetings at Scarborough, Whitby and Filey as well as community run events were attended to offer support and guidance to older driver. Some attendees took advantage of the free refresher course to have their driving assessed.



Image 24 – Older Driver Engagement at South Cliff Community Cafe

## **Speed Management**

During 2016/2017 the group received and processed 23 speed concern concerns. This resulted in 3 requests for Police speed enforcement and 3 local education programmes. 17 assessments did not require any further action.

## **Cluster sites**

There are 160 cluster sites identified in North Yorkshire compared with a total of 170 the previous year. Of these 160 sites, 26 are located within Scarborough District and details of these are contained on the next page. Of these, 24 are urban (40 mph or lower speed roads) and 2 are rural (over 40 mph limit roads). Of all Scarborough collisions 2014-2016, 19% occurred at cluster sites; 23% of all collisions in Scarborough in 2016 occurred at cluster sites.



# Reported Road Casualties in North Yorkshire: Annual Report 2016

## Road Safety Engineering Activities – Scarborough

### Collision cluster site locations

2016/17 NYCC Rank	Location	District	Site Type	Collision Sev. Factor	Cas Sev. Factor	Collisions			Total Collisions 2014-2016	Total Child Cas	Comments
						2014	2015	2016			
11	B1261 Scarborough Rd/Stoney Hags Rd, Jnct - Seamer	Ycm	urban	9	21	1	1	6	8	1	Traffic team designing signals to replace mini roundabout. Developer contribution/funded.
25	B1364 Castle Rd/B1364 North Marine Rd/St Thomas St, Rndbt - Scarborough	Ycm	urban	8	10	1	1	3	5	2	No pattern to collisions, to be monitored.
29	A165 Valley Bridge Prd/Somerset Tce/Westwood, Area - Scarborough	Ycm	urban	8	8	2	2	4	8	1	No pattern to collisions, to be monitored.
35	A1039 King Hill Muston/A165, Jnct - Muston	Ycm	urban	7	12	2	2	3	7	2	To be investigated.
49	A165 Filey Rd / Queen Margaret's Rd, Xrds - Scarborough	Ycm	urban	7	8	3	2	2	7	1	No pattern to collisions, to be monitored.
50	A165 Northway/B1364 Victoria Rd, Jnct - Scarborough	Ycm	urban	7	8	2	3	1	6	0	Proposed pedestrian refuge for Northway being investigated.
53	A64 Westborough / Scarborough Station, Area - Scarborough	Ycm	urban	7	7	1	2	3	6	1	Traffic team considering refurbishment improvements.
61	A171/B1266 High St, Jnct - Scaling	Ycm	rural	6	11	3	2	0	5	2	Site will continue to be monitored.
83	A165 Columbus Ravine/Dean Rd, Rndbt - Scarborough	Ycm	urban	6	6	2	1	3	6	0	Major changes being considered to address cyclist collisions.
84	A165 Northway/Trafalgar St West, Jnct - Scarborough	Ycm	urban	6	6	2	1	2	5	0	Proposed pedestrian refuge to be ordered.
85	A171 Scalby Rd/ Woodlands Ravine, Jnct - Scarborough	Ycm	urban	6	6	1	2	1	4	0	Site affected by Local Enterprise Partnership funded junction improvement proposed by Scarborough Borough Council.
87	A171 Prospect Hill/A174 Prospect Hill, Jnct - Whitby	Ycm	urban	5	17	2	0	3	5	2	Changes recently introduced at Mayfield signals. To be monitored.
100	A64 Falsgrave Rd/Belgrave Cres/Londesborough Rd, Jnct - Scarborough	Ycm	urban	5	7	1	3	0	4	0	No pattern to collisions, to be monitored.
106	A170 Stepney Rd/Stepney Dr, Area Around Rndbt - Scarborough	Ycm	urban	5	6	2	1	1	4	0	Site affected by Local Enterprise Partnership funded junction improvement proposed by Scarborough Borough Council. Site may also be altered through developer funding to improve pedestrian facilities. To be monitored.
111	Westway/Overdale/Eastway/Moor Rd, Rndbt - Scarborough	Ycm	urban	5	5	0	3	1	4	2	Removal of the pedestrian guardrail at site under investigation. Developer funding may improve this site for pedestrians and cyclists, subject to whether the link bridge is completed 01/01/2018.

Reported Road Casualties in North Yorkshire: Annual Report 2016

Contact – [bi.operations@northyorks.gov.uk](mailto:bi.operations@northyorks.gov.uk)