

Selby district (Area 7)

Selby district in brief

- ◆ Two adult were **killed** on Selby's roads during 2016, this is the second lowest number of people killed on Selby's roads since modern records began in 1990. In 2015 1 adult was killed on Selby's roads. The 2 people killed in 2016 were a pedestrian and a PTW rider.
- ◆ The number of people **killed or seriously injured (KSI)** was 48 in 2016 and had increased from 36 in 2015. In terms of road user groups, the number of KSI has increased amongst car occupants (+10), goods vehicles (+1), pedestrians (+1), P2W (+1) and other category stayed the same at 0. There was a decrease in the number of pedal cyclists (-1).
- ◆ The number of **total casualties** in road collisions reported to the police in 2016 was 244, down 2% on 2015 (250). This decrease is mainly due to the pedal cyclist group which saw a decrease in casualties in 2016 (from 35 to 24). The goods vehicle group also saw an overall decrease from 18 to 9 and the other groups reduced from 3 to 2. The car occupant saw increases from 144 to 158 and PTW groups from 36 to 37.
- ◆ The reported number of **child KSI casualties** (aged 0-15) in the district in 2016 (0) is below the previous year (1) and the lowest year since modern records began.
- ◆ The number of **cyclist** casualties has decreased by 31% from 35 in 2015 to 24 in 2016. Child cyclist casualties (3) have decreased by 2 from the previous year (5).
- ◆ **Pedestrian** casualties stayed the same in 2016 as in 2015 at 14. There was an increase in pedestrian KSI (3) which is 1 more than the total (2) recorded the previous year.
- ◆ The number of **powered two wheeler (PTW)** casualties has increased by 3% to 37 in 2016 from 36 in 2015. The PTW KSI (15) is 7% more than the total (14) recorded the previous year.
- ◆ A total of 180 **road collisions** that resulted in someone being injured were reported to the police in 2016, 6% less than in 2015 (191). This total works out at an average of 15 collisions per month or 4 per week.

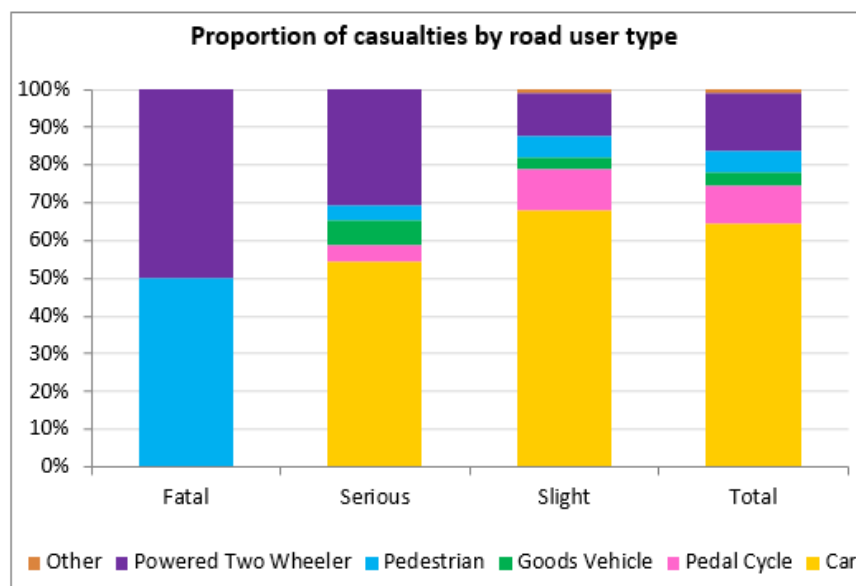


Figure 25 - Proportion of all casualties by road user type in 2016 - Selby
Source - Data Intelligence, North Yorkshire County Council

Reported Road Casualties in North Yorkshire: Annual Report 2016

All Casualties - Selby

The trend in road casualties reported to the Police in Selby continues downwards and is still below the overall downward trend line.

In 2016, the district has recorded 18 fewer casualties compared to the previous year. The decrease is shown in the reduction of pedal cycle casualties (-11), good vehicle (-9) and other vehicle types (-1). The number of car occupants and PTW each increased in 2016 (by 14 and 1 respectively).

The decrease in all casualties injured in the Selby district is better than the countywide picture (-9% in Selby, -2.5% in North Yorkshire compared to baseline).

Facts about all casualties in 2016

- ◆ There were 244 casualties in 2016, 6 less than in 2015 (a 2% decrease).
- ◆ Car occupants make up the largest proportion of road casualties (65%); followed by PTW (15%), pedal cyclists (10%), goods vehicle (7%), pedestrians (6%), goods vehicles (4%) and others (1%).
- ◆ The number of casualties recorded in 2016, is 9% below the 2011-15 baseline average.
- ◆ The number of children injured (16) which represent 7% of all casualties in 2016; was the same as in 2015.
- ◆ Cyclist casualties decreased in 2016, the 2016 total (24) is now 8% below the 2011-15 average (22).

Selby	Baseline (Avg 11-15)	2013	2014	2015	2016	2016 vs baseline	Statistically significant change
Fatal	5	6	6	1	2	-60.0%	—
Serious	44	44	47	35	46	5.0%	—
Slight	221	220	211	214	196	-11.2%	—
Total	269	270	264	250	244	-9.4%	—
KSI	49	50	53	36	48	-1.6%	—
Child KSI	4	3	7	1	0	-100.0%	—
Young Person KSI	11	14	14	7	13	16.1%	—
Adult Person KSI	18	14	18	14	20	12.4%	—
Older Person KSI	14	15	14	14	11	-19.1%	—
Elderly Person KSI	2	4	0	0	4	122.2%	—
Pedestrian KSI	4	4	7	2	3	-28.6%	—
Cyclist KSI	4	6	8	3	2	-54.5%	—
PTW KSI	17	16	20	14	15	-13.8%	—
All Child Casualties	23	22	30	16	16	-29.8%	—
All Cyclist Casualties	26	31	29	35	24	-8.4%	—

Table 19 - Reported road traffic casualties and severity since 2013 - Selby

Source - Data Intelligence, North Yorkshire County Council

Killed or Seriously Injured (KSI) Casualties - Selby

In 2016, with a total 48 KSI casualties, numbers have risen slightly and are 2% above the 2011-15 baseline average (52).

The year saw a decrease in the number of pedal cycle KSI casualties, which has fallen by 1 since the previous year. Other vehicle types stayed the same at 0. The number of car occupants increased by 10, the number of goods vehicle, pedestrian and p2w casualties all increased by 1.

The number of KSI (0) amongst children (0-15 years old) has reduced in 2016 compared to the previous year (1).

The increase in KSI in 2016 against 2015 is disappointing; however 2015 had been the lowest year for KSIs in the Selby district since modern records began and 2016 is still the second best year and the change is within statistical norms.

Facts about KSI casualties in 2015

- ◆ The number of people killed or seriously injured fell by 31% to 36 in 2015.
- ◆ The three most vulnerable road user groups (pedestrian, cyclist and PTW riders), between them, account for 53% of all KSI casualties.
- ◆ The decrease in KSI casualties in 2015 is associated with decreases in the number of PTW (-6), pedal cyclist (-5), pedestrian (-5), car occupants (-2) and other (-1).
- ◆ The district performed slightly worse for the goods vehicles (+2).
- ◆ Cyclist KSI casualties fluctuate from year to year but appear to hold an overall downward trend in Selby – which differs from most other districts. This will be closely monitored following the Tour de Yorkshire running through the district in 2015.

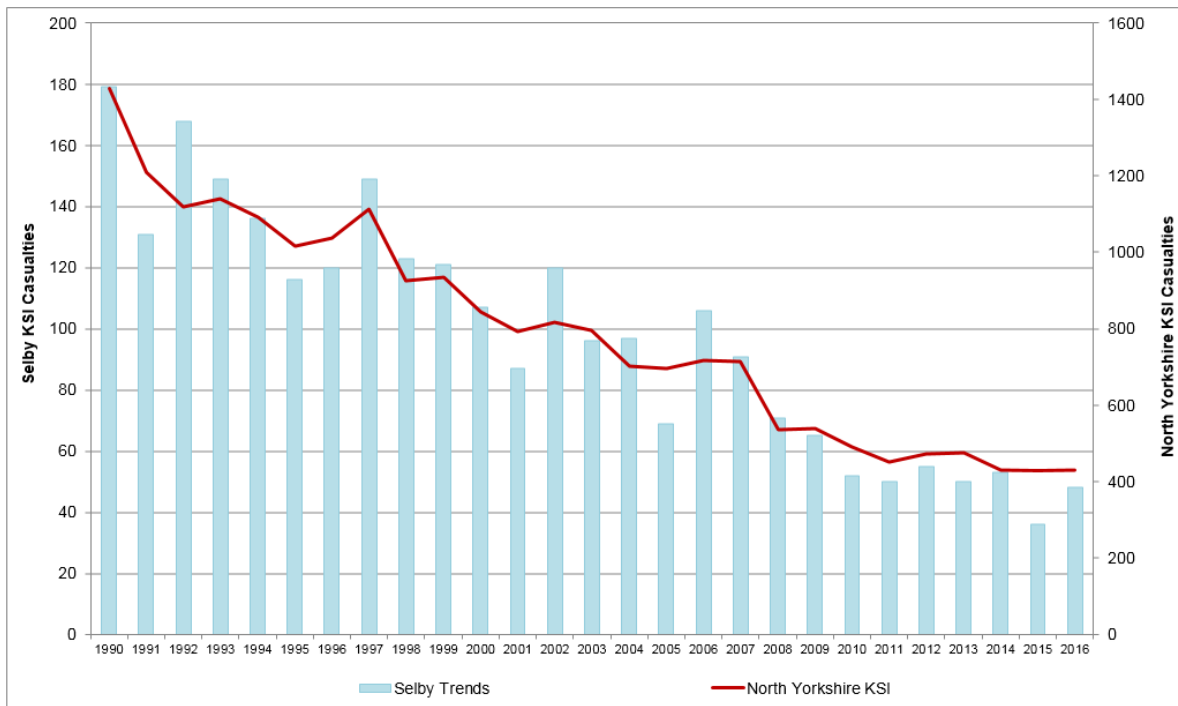


Figure 26 - Reported road traffic KSI casualty trends since 1990 - Selby
Source - Data Intelligence, North Yorkshire County Council

Child Casualties – Selby

The number of child casualties stayed the same as in the previous year (16), continuing the overall downward trend despite some variations from year to year.

The number of KSI (0) amongst children (0-15 years old) has decreased in 2016 compared to the previous year (1) and is at its lowest number since records began.

This year's overall child casualty numbers show a decrease of 30% against the 2011-15 baseline average, and no change since the previous year.

Though there was no change in the overall number of child casualties, individual vehicle type groups did change. An increase was seen in number of child car occupants from 3 to 8 in 2016. Decreases were seen in the number child pedal cyclists (-2), child pedestrians (-2) and child goods vehicle passengers (-1).

Facts about Child casualties in 2016

- ◆ 7 of the 16 children injured in the Selby district were secondary age, 2 were primary age and 6 were pre-school age.
- ◆ The most frequent causation factor in collisions involving children is vehicle failed to judge other person path or speed, vehicle driver failed to look properly, jointly followed by pedestrian failed to look properly and vehicle following too close.
- ◆ Of the 3 child pedal cyclists injured, 2 were wearing a cycle helmet and 1 was not wearing a helmet. In 2 of the cases the cyclist was at fault and in 1 case a car was at fault.
- ◆ Of the 5 pedestrian child collisions, 3 occurred when a child pedestrian stepped out without looking, 1 when a car was reversing and 1 when a cyclist was overtaking a car that had stopped to let the child pedestrian cross the road.
- ◆ The majority of collisions involving children occurred on a weekday (12 of 14). 4 of these collisions occurred on a Friday and 6 of these collisions occurred on an evening after school travel times, 4 of the collisions appear to have occurred during school travel times.

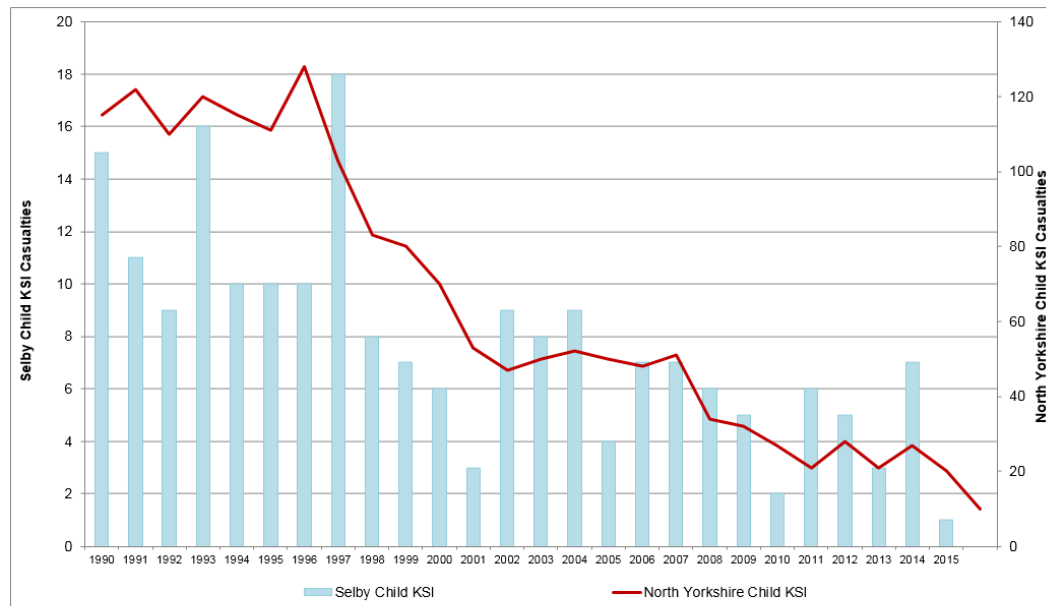


Figure 27 - Reported road traffic KSI child casualty trends since 1990 - Selby
Source - Data Intelligence, North Yorkshire County Council

Road Safety Education and Community Engagement - Selby

Children - Primary School

Junior Road Safety Officers are Year 5 pupils in schools who relay key Road Safety messages to their whole school community. The pupils take part in fun learning activities which they can share with others. During their time in office, they are supported by the County Council Road Safety and Travel Awareness Team and their school

There are many ways the pupils can get involved, including:

- ◆ School assemblies
- ◆ Notice boards
- ◆ Competitions

Schools in the Selby area are keen to participate in the Junior Road Safety scheme each year. This year over 25 schools were involved. Each school submits a diary as a record of their year's activities in July.

The aims of the scheme are:

- ◆ To reduce the numbers of children injured on the roads
- ◆ To promote a sense of responsibility and positive citizenship among children
- ◆ To enhance the importance of safety among pupils, parents and school staff
- ◆ To develop innovative ways of putting safety messages across

Image 41 – Prize winning Junior Road Safety Officers (JRSO) at Carlton Primary with their “Best diary keeping” awards



In May the team attended the Primary Head Teachers Conference at the Pavilions to promote Road Safety in the Primary Curriculum.

This year the emphasis was on getting more schools around the county to engage pupils in thinking about their school journey on transition to secondary school. We gave out Transition resources to schools to use.

Image 43 - The Team at the Primary Heads Conference

Also, the team delivered a workshop to Teachers in June attending The Primary Network meeting for PSHE teachers.

The team attended the Children's Voice conferences in Harrogate and Scarborough to promote the resources and



Reported Road Casualties in North Yorkshire: Annual Report 2016

schemes designed for schools on Road Safety and Active Travel themes.

The Road safety and Travel Awareness Officer has supported several local schools and communities concerned about school gate parking issues and provided advice together with our School Gate Parking Resource Pack.

The team attended the STEM (Science Technology and Maths) fairs at Barlby High School and Selby High School STEM fair to deliver a Safer Cycling Workshop science based to around 75 pupils on each day.

The Team attended the York and Selby Crucial Crew Event at Askham Bryan College which was attended by over 1300 children



Image 44 – Display at the Children’s Voices Conference

Image 45 – York and Selby Crucial Crew event



Bikeability

Bikeability is a new improved version of cycle training designed to provide the skills and confidence to ride their bikes on today’s roads for pupils in Year 5&6. The training is led by qualified National Standard Instructors. The training takes place over an intensive 2 full days.

- ◆ Day 1 will include Level 1 off road training and the start of Level 2 training covering on road skills and independent cycling.
- ◆ Day 2 will continue with level 2 training.

Some 476 Year 5 and 6 primary school pupils over 43 courses have benefitted from participation in the Bikeability cycle training programme over the last year. We have a dedicated team instructors working in the area led by a hardworking and efficient Road Safety Assistant.

A small number of schools across the county including Barlby Community Primary School also took part in Bikeability Balance which is Balance Bike training for Foundation aged pupils.

Image 46 – Bikeability training in Selby



Image 47 – Bikeability balance training



Children – Secondary School

The 'Drive Alive' event that addresses young drivers, potential drivers and passengers risks and responsibilities was delivered at, Selby College and Sherburn High School. Throughout the day students receive sessions from North Yorkshire Police, North Yorkshire Fire & Rescue, and members of the Road Safety team including a session on drink/drug driving. David and Janet Warin end the day by sharing their experiences of losing their son Daniel in a Road Traffic accident 3 weeks after passing his driving test. The feedback from pupils following the Drive Alive day is always very positive.

'It opened my eyes to show anyone can be affected by collisions on the roads and it affects a lot of people when a collision takes place.' Student at Selby College

'I really enjoyed it and found it moving and insightful. It was really the best session and a real privilege.' Student at Selby College

'It was a really great day yesterday – do thank all of your presenters. We've had great feedback from all students and staff.'

'I look forward to seeing you next year!' Headteacher at Sherburn High School

Transition

Transition from primary to secondary school is one of the biggest steps a pupil will take in their school life and how they choose to travel to their new school needs careful consideration and planning and offers an opportunity to develop positive travel habits. Resources including the 'Way to Go' and 'Move on Up' magazines have been made available to Primary Schools to use with Year 6 pupils to prepare them for the journey to secondary school and raise awareness of road safety issues.

Young People

The "Enhanced Pass Plus" programme has been promoted to young, novice drivers in the district. Specially trained driving instructors have been recruited, who have learned additional coaching skills from the Road Safety Team. The Enhanced Pass Plus programme includes a number of practical driving lessons to experience

motorways, city driving and other more advanced challenges whilst accompanied by an experienced driving instructor. The Road Safety and Travel Awareness Officer leads a further (compulsory) workshop session in which the young or new drivers analyse crashes, explore attitudes, perceptions and risky behaviours in themselves and their passengers and peer groups and learn how to recognise and minimise potentially risky situations. The New Driver Discussion groups are held at Selby Fire Station this year. This initiative is supported by Public Health and Police & Crime Commissioner funding and is partly paid for by the young drivers themselves.

Working with Driving Instructors

We continue to work with driving instructors to deliver the EPP training for new drivers and Older Driver refresher drives for more experienced drivers who want to keep up to date and driving confidently and safely. We would welcome more instructors to join the register.

Motorcyclists

We continue to work with motorcyclists to reduce casualties and address local concerns. Face to face engagement at popular motorcyclist destinations took place at Squires Café as successful means of disseminating campaign messages directly to motorcyclists. We are grateful to the café proprietors for their unstinting support for this work.

The local Fire and Rescue Team together with NYCC Road Safety Officer visited Squires Café again in June as part of the CFOA Road Safety week to talk to motorcyclists and hand out our Motorbike packs.

We provide advice on safer responsible riding and promote post-test Rider Development Courses. In particular we distribute information packs including our “Bikers Guide to North Yorkshire” booklet that recommends appropriate safer riding techniques and behaviour to reduce risk of injury and also a safer riding tips DVD.

Advice for motorcyclists is available on the www.roadwise.gov.uk website, the “NYrides” videos use social media such as YouTube and Facebook, to raise awareness of hazards and consequences of risky behaviour.

Image 48 – Motorcyclist engagement at Squires Café

We liaise with North Yorkshire Police Traffic Officers to maximise their enforcement activities and to promote Bikesafe, the police led rider assessment programme.

Biker Down courses for riders dealing with first aid and what to do if they are first on the scene of a motorcycle crash were held at Selby Fire Station.



Cyclists

The Tour de Yorkshire passed through the Selby area this year. The team distributed a Tour de Yorkshire activity booklet to all the schools on and near to the route. Members of the team also held a bike activity day at St Joseph's Primary School in Tadcaster.

We promote safer cycling initiatives throughout the county, especially on the Tour de France and Tour de Yorkshire and other popular routes. The **"Cycle Yorkshire, Ride the Routes"** app uses maps and videos to provide advice on a range of issues including rural riding preparation, avoiding fatigue related collisions and hazard recognition and avoidance techniques.



Image 49 and 50 - Tour de Yorkshire attendance in Tadcaster & Tour De Yorkshire Schools Baton Relay

Children across Yorkshire took part in the Tour de Yorkshire Schools Baton Relay Event.

The baton handover took place on the Route 65 cycle path from York to Selby.

Image 51 - The City of York School Naburn hand over the baton to Riccall Primary School and Barlby High Secondary school pupils to continue its journey across Selby.



Older People

Road Safety Team have organised a number of "refresher drives" to drivers over 50 to provide them with driving tips, techniques and advice. These have been attended by 12 drivers across the Selby district.

Community Engagement/ Local Partnership Working

Winter driving and winter and summer drink drive campaigns were held across Selby and Tadcaster.

Also several Seatbelt surveys have been completed in various locations across the Selby area including: Brayton, Barlby, Sherburn, Barkston Ash and Towton.

Image 52- Road Safety Officer at community engagement event



Speed Management

There have been 19 speed management requests in the Selby district in the last year, of which 10 resulted in no further action, 2 were sent for review by the highways engineers, 2 were sent to the Community Speed Watch Scheme and 1 forwarded for enforcement.

The police Community Speed Watch scheme is now being rolled out on a district by district basis to be offered to communities where a speeding concern has been investigated and there is insufficient grounds for other interventions such as engineering or enforcement. It is often the case that although traffic is a cause for some concern to local residents, the evidence shows that many vehicles are not exceeding the speed limit. Community Speed Watch enables concerned communities to help themselves to address these lower level but real concerns with an organised and police supported scheme.

Cluster sites

There are 160 cluster sites identified in North Yorkshire compared with a total of 170 the previous year. Of these 160 sites, 23 are located within Selby and details of these are contained on the next page. Of these, 12 are urban (40 mph or lower speed roads) and 11 are rural (over 40 mph limit roads).

Of all Selby collisions 2014-2016, 20% occurred at cluster sites. 21% of all collisions in Selby in 2016 occurred at cluster sites. A weighting index is applied based on the severity of collision i.e. slight, serious or fatal using weightings of 1, 2 and 3 respectively, it is then sorted by the collision severity factor, then by the casualty severity factor and lastly by total child casualty numbers in order to give every site a unique risk based ranking.

Reported Road Casualties in North Yorkshire: Annual Report 2016

Road Safety Engineering Activities – Selby

Collision cluster site locations

2016/17 NYCC Rank	Location	District	Site Type	Collision Sev. Factor	Cas Sev. Factor	Collisions			Total Collisions 2014-2016	Total Child Cas	Comments
						2014	2015	2016			
14	A64/A162 Flyover WBC offslip, Tadcaster	Sel	rural	9	12	2	1	4	7	0	Highways England are aiming to deliver an improvement scheme this financial year to change the junction layout by removing the long "slip" access onto the A162.
17	A64/Bramham Interchange West by A1 - Tadcaster	Sel	rural	9	10	1	3	3	7	0	Highways England has been notified about this site's inclusion in the North Yorkshire annual report.
28	A63 NB Rndbt W. A1(M) at Jnct 42 - Lumby	Sel	rural	8	9	2	2	1	5	0	Highways England has been notified about this site's inclusion in the North Yorkshire annual report.
34	B1222, by New Inn Bridge - Newthorpe	Sel	rural	7	13	3	0	1	4	0	No pattern to collisions, to be monitored.
36	A64 / Catterton Ln Jnct, Nr A659 Jnct - Tadcaster	Sel	rural	7	12	1	0	3	4	2	Highways England has been notified about this site's inclusion in the North Yorkshire annual report.
39	C306 Toulston Lane/Rudgate, jnct, Tadcaster	Sel	urban	7	12	1	2	1	4	0	A scheme to remove trees and bushes within the visibility splay was carried out Nov 2017. To be monitored.
67	A19 Gowthorpe/A19 Brook St/A1238 Gowthorpe/Scott Rd, Jnct - Selby	Sel	urban	6	8	2	3	1	6	1	Road markings recently changed/refreshed, to be monitored.
70	A19 Barby Rd / Thomas St / George St, Jnct/Area - Selby	Sel	urban	6	7	1	2	1	4	1	No pattern to collisions, to be monitored.
78	A1041 Park St/A19 Gowthorpe - Jnct/Area - Selby	Sel	urban	6	6	2	1	3	6	2	No pattern to collisions, to be monitored.
80	A19 Gowthorpe/James St, Jnct - Selby	Sel	urban	6	6	2	1	1	4	1	No pattern to collisions, to be monitored.
82	A19 Doncaster Rd/A63, Rndbt - Brayton	Sel	rural	6	6	1	4	1	6	1	No pattern to collisions, to be monitored.
94	B1222, Low Grange, Jnct By Becks Farm - Newthorpe	Sel	rural	5	9	1	2	1	4	0	No pattern to collisions, to be monitored.
98	A1041 Bawtry Rd/Canal Rd, Jnct - Selby	Sel	urban	5	7	1	2	2	5	2	A new roundabout is proposed at this junction as part of a package of highway improvements associated with a residential development in the locality.
99	A19 Selby Rd/Balne Moor Rd, Jnct - Whitley	Sel	urban	5	7	0	0	5	5	0	Signage /visibility improvement scheme to be developed in 2018/19.
103	Flaxley Rd/Scott Rd, Jnct - Selby	Sel	urban	5	6	0	2	3	5	4	Investigating options to address pattern.

Reported Road Casualties in North Yorkshire: Annual Report 2016

Contact – bi.operations@northyorks.gov.uk